



# HEALTHCARE CARTS & POINT-OF-CARE PRODUCTS



**CAPSAHEALTHCARE**

Distributed By

**SYSTEMZ**

Medication Carts  
Computing Workstations  
Wall Arms



Elevating performance,

every day.

Through inventive product design and commitment to customer support, Capsa Healthcare has been a market leader for over 50 years.



**Capsa** Solutions and Rubbermaid **Healthcare** have been fully integrated to form **Capsa Healthcare**.

Collectively, our passion as a single organization is born out of the same commitment and purpose that our customers have to providing superior patient care. We understand the delivery of healthcare cannot wait which is why we continually invest in product development, technology innovation, service, and support to make sure we are the logical choice for products that elevate the performance of healthcare delivery at the point-of-care.

**Capsa Healthcare** provides an extensive portfolio of mobile computer carts, point-of-care wall mount products, and creative service programs designed to optimize your health I.T. program. With improved cart uptime and simple serviceability, Capsa's mobility solutions improve user experience and support better clinical workflow.

Welcome to **Capsa Healthcare**.

Inquire about special  
Refresh '17 Tailored Cart Fleet  
Replacement Program.







# M38e

## Computing Carts

The NEW M38e from Capsa Healthcare is an evolution of the most proven point-of-care computing cart in healthcare. With updated features that provide superior ergonomics, enhanced ease-of-use, and expanded storage flexibility, the M38e maximizes clinical efficiency and elevates the performance of your health IT program.

- 15% smaller profile glides through tight care settings
- 10% larger work area with additional 100 square inch expandable surface feature
- 25% increase in battery runtime for improved uptime performance
- Up to 24% larger CPU storage area affords organized tech organization



*Comfortable  
two-position  
handles simplify  
mobility*



*Intuitive locking  
and security  
system*



*Integrated  
storage pods  
and protective  
document cover*



M38e

## Features &amp; Models



*Choose from  
an array of  
workflow and  
accessories  
options*



*Choose from  
an array of  
flexible  
storage  
options*



*Efficient  
Li-ion power  
in cart base or  
swappable pack  
system*



**M38e**  
Document Model



**M38e**  
RX Model

## General Specifications:

- Top Work Surface Size: 19.6" w x 10.5" d
- Casters: 5" directional casters
- Choose from manual or electronic lift
- Adjustable monitor mount and keyboard tray
- Enhanced power base with improved ventilating system for safety
- Intuitive locking and security system

## Optional Accessories:

- LCD access pack
- Monitor height adjustment w/swivel
- Wire basket
- Scanner mount options
- Large printer shelf
- Trash bin
- Dual monitor mounts

Power System	Non-Powered	AC Powered Lithium
Target Run-Time (typical configuration):	Laptop Battery Only	7-10 Hours/Charge
Charge Time from Empty:	Laptop charge time only	2.5 Hours
Battery Life Cycles:	N/A	2500+
Recommended Technology:	Laptop (up to 17" screen)	Laptop (folded), thin client, or All-In-One PC



# M38e

## Features & Models



M38e RX Model



M38e Double  
RX Model

### Key Features

- Electronic Keyless Entry System with auto-lock and audit capabilities
- 4 Drawer sizes that can be mixed and matched to individual unit and nurse preferences
- Integrated keyboard light with auto shut-off feature for nighttime use
- Document cover protects reference documents and notes placed on the work surface
- Raised edge around work surface helps retain spills
- Work Surface has a 16" range of adjustable height
- Contoured handle minimize strain when pushing cart

### Best Suited For

#### Initiatives

- Bedside Documentation
- Medication Administration
- California Nurse – Patient Ratio Law Compliance
- Med/Surg, Respiratory, ICU
- Cart fill or cabinet-based medication delivery

#### Units/Functions

- Med/Surg Department
- Emergency Dept
- Ambulatory/Outpatient Areas
- Operating Rooms
- ICU
- Patient Registration



# Specialty Carts

## CareLink™ Fetal Monitoring Cart

*The NEW CareLink Fetal Monitoring cart provides both fetal monitoring and a mobile workstation in a single solution. Your choice of medical monitoring system promotes workflow efficiency in labor and delivery departments*



### Features

- Dual-swivel monitor mount supports up to 22" monitors
- Stable open shelf supports and secures a variety of Fetal Monitoring systems On-Board communication tools for receiving messages and sending service requests
- N-Sight fleet management for remote asset management
- N-Stride steering control for effortless maneuverability and control
- Expansive work surface
- Height adjustable with electronic lift

## CareLink™ High Capacity Medication Cart

*With its compact footprint and flexible drawer system, the CareLink High Capacity Double RX Medication Cart maximizes nurse efficiency, mobility and patient safety.*



### Features

- 5 Drawer sizes that can be mixed and matched to individual unit and nurse preferences
- Integrated keyboard and drawer light feature auto shut-off for nighttime use
- Electronic keyless entry system
- Locking side bind provides additional locked storage that is removable for easy supply retrieval
- Communication tools: receive messages and send service requests
- N-Sight fleet management for remote asset management

## Telehealth Carts & Wall Mounts

*From basic platforms to those with enhanced functionality, our Telehealth solutions are simple, versatile and clinical. Choose from Telepresence cart solutions that will accommodate video conferencing technologies, to Telemedicine platforms for integrating medical peripheral cameras and scopes. Wall mount solutions offer flexible configurations for tighter space requirements. The CLINiC Telehealth consultation device provides an easy-to-use, intuitive interface.*



### Features

- Telemedicine platforms offer I/O panel plug-n-play to easily integrate medical peripheral cameras and scopes with customer supplied PC or Codec
- Telepresence carts enable video communication to enhance workflow, with real-time consultations
- Wall mount solutions provide another virtual care platform with a small, lightweight footprint, requiring minimal wall space.
- The CLINiC clinical care device offers flexible configurations that connect doctors and clinicians to patients.



# Accessories



*LCD Access Pack  
for med cups,  
tape and  
alcohol wipes*



*Mounting  
Bracket for  
Caviwipes  
Bracket*



*Large  
Printer Shelf  
15" w x 9" d*



*Rotating 5" Height  
Adjustment  
Monitor Bracket*



*3-Sided  
Mounting  
Bracket*



*Wire Basket*



*Rotating Monitor  
Bracket*



*Mounting Plate  
for Sharps  
Bracket  
and Accessory  
Bins*



*Trash Bin*



*Locking Side  
Bin with  
removable bin*



*Barcode  
Scanner  
Charging  
Station Shelf*



*IV Pole 25" H x .75"  
Diameter*

Check with your Capsa Healthcare regional sales manager about these and more accessories specific to your chosen point-of-care solution.

## Swappable Batteries

Swappable battery power systems use removable batteries that can be charged in a location, separate from the cart.



*Elora 240  
swappable  
batteries allow  
cart to run 24/7  
with no downtime*



*Battery mounting  
bracket provides easy  
access to remove and  
replace swappable  
batteries*



*Smart charging cabinet shows which  
battery is charged and ready for next  
use, ensuring all batteries are used  
equally for maximum battery life*





# Additional Information

Ask Capsa Healthcare for more information about our benchmark solutions for point-of-care mobile computing, wall mount products, or advanced medication management systems.



## Web Site

Visit the Capsa website to learn more about our comprehensive line of products that support your healthcare I.T. program. The website provides in-depth information about product features, options and specifications that will give you the insight you need to find the perfect solution for your facility.

[www.CapsaHealthcare.com](http://www.CapsaHealthcare.com)



## Email

To request more information about Capsa products or to learn more about regional representation or distribution partners in your area, simply send us an email:

[Info@CapsaHealthcare.com](mailto:Info@CapsaHealthcare.com)



## Phone

If you have specific questions and wish to speak with someone directly, contact Capsa Healthcare and ask for Customer Service.

[800.437.6633](tel:800.437.6633)



Certified ISO  
27001:2013



Certified ISO  
9001:2008

## Storage Selection

### Your Storage Selection

Add additional storage options from the right. Check the box to select, then confirm to proceed to the next bay

☐ -- select --

☐ -- select --



Select Storage

No Thanks ▶

### Your Storage Selection

Add additional storage options from the right. Check the box to select, then confirm to proceed to the next bay

☐ -- select --

☒ 4 Drawer Vertical Expansion Pack



Select Storage



Click here to confirm your selections

**Customizable  
Drawer Options**



Full Drawers



# Accessories

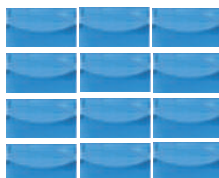
## Customizable Drawer Options

### M38 RX Mobile Medication Models



### Rx 4-level configuration

4a



4b



4c



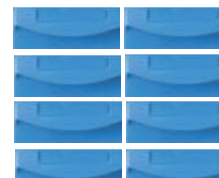
4d



4e



4f



### Xp 2-level configuration

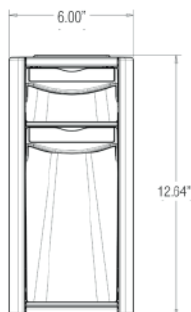
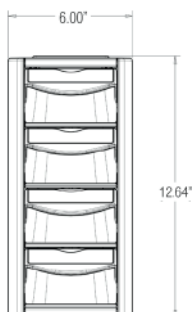
2a



2b



### SIDE EXPANSION PACK



1.1- 98 W x 272 D x 50 H



1.2- 156 W x 272 D x 50 H



1.3- 325 W x 272 D x 50 H



2.2- 156 W x 272 D x 120 H



2.3- 325 W x 272 D x 120 H



1.3- 98 W x 272 D x 200 H  
(vertical expansion kit only)



# Accessories

## Side Expansion Pack

### Your Storage Selection

Add additional storage options from the right. Check the box to select, then confirm to proceed to the next bay.

☐ -- select --

☒ 4 Drawer Vertical Expansion Pack

Select Storage

Click here to confirm your selections



Sections:

☐ 1

☒ 2



4 Drawer Vertical Expansion Pack



2 Drawer Vertical Expansion Pack



Locking Side Bin

### Product Description

The Vertical Expansion Pack can be added to the side of an M38 RX in order to provide additional storage for necessary items at the point of care.

### Features and Benefits

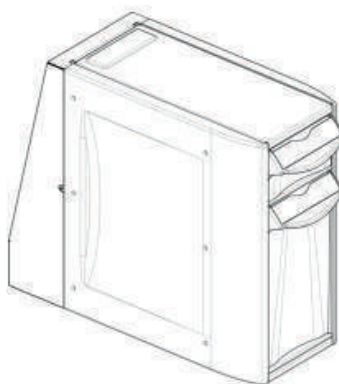
- Storage of items on cart allows for a more efficient workflow.
- Drawers maintain a locking mechanism in order to ensure the security of items.
- Option of two or four drawers cater to user's storage preferences.

### Specifications

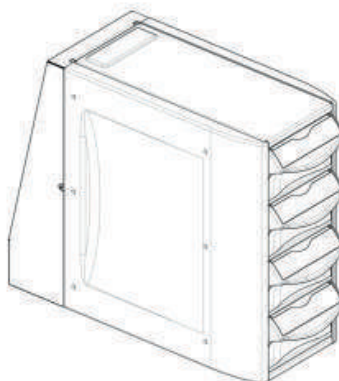
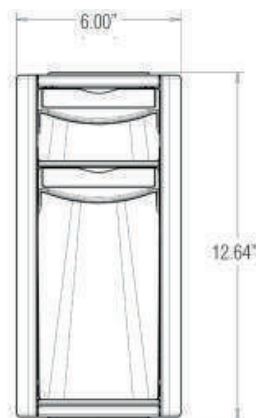
Accepted on all M38 RX Carts.

Dimensions: 12.64" h x 6.00" w x 15.65" d

Note: The 4 Drawer Expansion Pack Module has 4 small drawers, whereas the 2 Drawer Expansion Pack has 1 small drawer and 1 three-deep tall drawer.



Vertical Expansion Pack 2 Drawer Module



Vertical Expansion Pack 4 Drawer Module





## Customizable Drawer Options



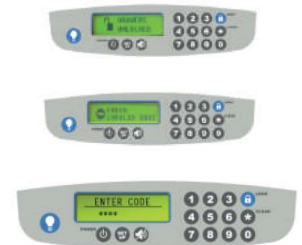
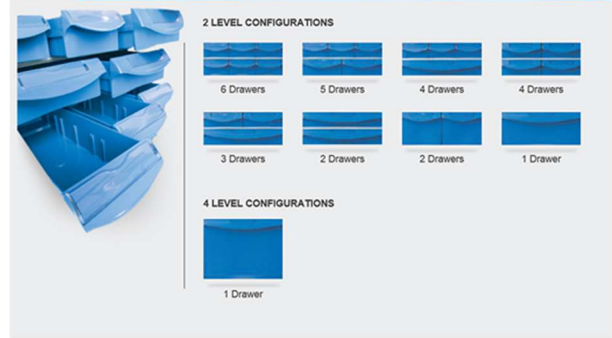
+



Liquid Storage

+

### Customizable Drawer Options



# Possible Configuration

Deployment in Singapore by Systmz



# Possible Configuration

Deployment in Singapore by Systmz





## Powered Computing Cart Workstations

# Preventive Maintenance

Getting peak performance from your mobile computing cart fleet is key to optimizing the ROI of your electronic health records. Maximum runtime, simple function, and hassle-free use by your clinical staff supports your comprehensive EHR initiative and ensures your facility is getting the most value out of your computing cart investment.



*M38 documentation cart*



To protect optimal performance, Capsa Healthcare recommends a periodic inspection and preventive maintenance of your computing cart fleet. These simple steps can safeguard against breakdowns and help you realize uninterrupted clinical workflow and cart availability.

Take a few minutes to consider these simple tasks that can support improved runtime and consistent performance from your computing cart fleet. As always, please contact Capsa Healthcare service team at 800.437.6633 if you have any questions or require expert technical support on your Capsa computing cart solutions.

**[See other side for Inspection Checklist](#)**



# Preventive Maintenance & Inspection Checklist

## Powered Mobile Computing Cart Workstations

Items	Review & Check	Maintenance / Action
<b>Power Supply</b>	Voltage and current output to original power supply specifications	Measure voltage and output to manufacturer specifications; contact Technical Support if unable to achieve normal output
<b>Base &amp; Power Supply Ventilation</b>	Inspect fan and airflow for dust and lint build-up or isolated collection	Remove dust and debris within base and around intake ports, battery cables, terminals, and chargers
<b>AC Power Cord</b>	Inspect AC cable and plug for any damage or perforation of protective insulation; ensure AC prongs are not loose or bent	Replace damaged cables immediately
<b>Power System Fuses</b>	Inspect for blown fuses or fuses that are not securely seated or fastened	Ensure fit and tightness of fuse; replace fuse(s) if circuit is broken within fuse
<b>Internal Cables / Assemblies</b>	Check that cables are firmly secured	Detach and firmly reconnect plugs, cables, and connectors
<b>Battery</b>	Check if battery voltage is within normal operating range	Measure battery voltage to manufacturer specifications; replace battery if unable to achieve normal voltage on full charge
	Inspect battery encasement for signs of damage, bulging, or cracks	If any signs of irregularity, disconnect and replace battery immediately
	Check battery cable connectors for correct tightness	Tighten if necessary
	Ensure battery terminals are free of corrosion	Remove cables and clean thoroughly
	Assess proper charging operation	Review charging practices to ensure batteries are charging properly and within expected time frames; replace battery if not charging properly
<b>Charging Stations (swappable battery systems)</b>	Review proper placement in facility and patient care areas	Ensure charging stations are in visible, open areas away from patient care and high-traffic workflow areas
<b>AC Charging Location</b>	Check cart charging location clearance	Ensure ample distance between charging carts and combustible items, other care devices, or congested clinical workflow areas
<b>Inspect cart base covers and hardware</b>	Check for loose or broken covers	If base cover is loose, tighten base to wheel frame; if base cover is cracked or broken, contact Technical Support to order replacement

**To request a quotation** for cart fleet inspection or other maintenance services, or for information on a comprehensive Preventive Maintenance program, contact your Regional Sales Manager or call Capsa Healthcare direct at **800.437.6633**.



Elevating performance,  
**every day.**



**CAPSAHEALTHCARE**

[www.CapsaHealthcare.com](http://www.CapsaHealthcare.com) | 800.437.6633

4253 NE 189th Avenue  
Portland, OR 97230