



**SYSTEM2**  
BESPOKE MODULAR SOLUTIONS

2009

Founded in 2009, Systmz develops and manufactures solutions that enhance workspace efficiency through innovative design. Systmz's expertise spans laboratory furniture, healthcare solutions, and interior fit-outs for iconic commercial venues.

Our award-winning industrial designers, interior designers, mechanical engineers, drafters and product specialists work hand in hand with clients to develop customised solutions tailored to specific projects.

With our line-up of exclusive global partners and in-house products, characterised by high-quality modular design DNA, we develop a highly modular and flexible range of healthcare and lab-grade mobile workstations and storage solutions. These user-centric products are designed and executed in collaboration with our client to meet their specifications with turn-key customisable solutions.

Working closely with architects and designers, we ensure the maximum use of available space and budget to meet every user's needs with intuitive solutions and optimise layouts, creating better working environments.

Our commitment to exceptional design, high-quality materials, and precision manufacturing, combines form, function, and future-forward thinking. Systmz delivers products that are built to last and best in class.

#### Product Range

**Laboratory Furniture:** We offer a comprehensive range of laboratory furniture solutions designed to enhance workflow and optimise space. Our modular designs provide flexibility and scalability, making them ideal for dynamic laboratory settings.

**Healthcare Solutions:** Our healthcare furniture solutions are developed to support the complex needs of medical environments. We prioritise ergonomic design, and future forward-thinking design to support workflow. Improve efficiency and comfort for healthcare professionals and patient experience.

**Interior Fit-Outs:** Systmz specializes in designing and manufacturing furniture for iconic commercial spaces. Our work in airports, museums, high-end hotels and other landmark venues exemplifies our ability to combine aesthetic appeal with attention to detail.



## ABOUT US

The Heart of Systmz comes from the people who work and collaborate tirelessly to give high quality precision solutions to our clients

True to our pledge to deliver quality output, Systmz remains committed to giving human-centric solutions based on machine-level precision and principles. We would like to take your design problems and provide results that solve and elevate the experience to the next level.

14+

## YEARS OF INDUSTRY

Healthcare  
Laboratory  
Interior  
Smart Solutions  
Construction

14+

## SOFTWARE PROFICIENCIES

Solidworks  
UE  
Pro-E  
Rhino  
Grasshopper  
Revit  
A-CAD

Adobe CC  
Maya  
Blender  
Keyshot  
CAD/CAM  
FEAV

100+

## PROFESSIONAL STAFF

Project Managers  
Interior Designers & Architects  
Industrial & UX Designers  
Mechanical Engineers  
Electrical & System Engineers  
Automation Specialists  
Tool Designers & Machinists  
Craftsmen



## PRODUCTION

All products in SYSTMZ are made in-house within our manufacturing facility at 16 Sungei Kadut Way. We have an assortment of precision CAD machinery for production use - guaranteeing exact measurements from 3d and computer simulations and drawings.

We employ quality trained personnel whose expertise range in metal and wood operation as well as on-site construction. We have builders whose experience and craftsmanship ensure consistency for every project.

35+

## Full CAD/CAM Operations

### Machineries

### Large Inventory of Furniture Materials

3 Axis CNC Machine • CNC Boring Machine • Sheet Metal Bending Machines • Sanding Machine • Long Bed CNC • Laser Cutting Machine Aluminium Extrusion Saw • CNC Router • 3D Aluminium Extrusion Bending Machine • Wood Panel Saw • Laser Plastic Cutting Machine • Sanding Machine • Long Bed CNC • Laser Cutting Machine • Laminating Line • Assembly Area • 3D Printers • Precision Welding • Aluminium Extrusion Stocks • Laminate Press



## BEDSIDE CABINET

SPACE SAVING

Integrated bedside cabinet w/ overbed table  
Space-saving docking feature  
Customised finishes  
Tablet mounting arm  
Moisture-resistant material  
Motion sensor light  
USB charging ports

BS-32

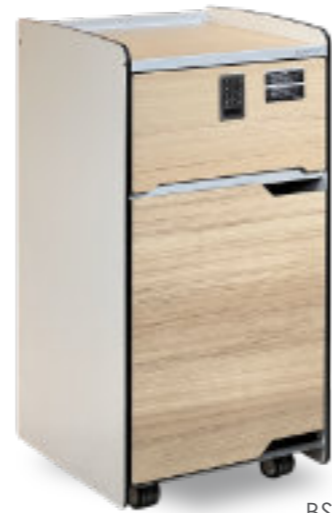




BS-12



BS-04



BS-43



CT-10



BS-10



BS-36

BS-45

SPECIFICATIONS

FEATURES / MODELS	BS-45	BS-04	BS-10	BS-12	BS-32	BS-43	BS-36	BS-XX*	CT-212	CT-15	CT-08
Intergrated with Overbed Table			•		•			√			
2 Tier Design		•	•			○	•	√			
Terrace Worktop for Water Jug	•	•				•	○	√			
Food Menu Compartment (Rear)	○		•	•	•	○	•	√			
Pullout Worksurface	•		○	○	•	○	○	√			
Electronic Keyless Lock with Backlit	•	•	•	•	•	•	○	√			
Combination Keyless Lock							○	√			
Keylock	•				•			√			
Soft Closing Drawer Mechanism	•	•	•	•	•	•	•	√			
Swing door with Dual Opening	•	•	•	•	•	•	•	√			
Removable Footwear Tray	•	•	○	○	•	•	•	√			
Clothes Hanger						○		√			
Motion Sensor Lighting			•	○	○	○	○	√			
USB Charging Outlet	•	○	•	○	○	○	○	√			
Height adj. gas spring w/ safety feature								√	•	•	•
Anti-microbial Moisture Resistant Worktop	•	•	•	•	•	•	•	√	•	•	•
Storage Holder								√	○	○	○
Vanity Set								√	○	○	○

• Standard feature    ○ Available as option    \* BS-XX : Customised model subject to MOQ



USB charging outlet (optional)



terrace worktop for water jug



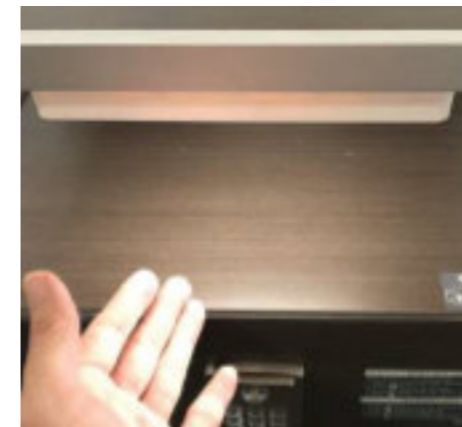
tablet holder w/ mounting arm



moisture resistant material



wireless charging (optional)



motion sensor lighting (optional)



external USB-C charging port



retractable hook (optional)



electronic keyless lock with backlit (optional)



pullout worksurface



ultra low castors  
red locking lever



removable  
footwear tray

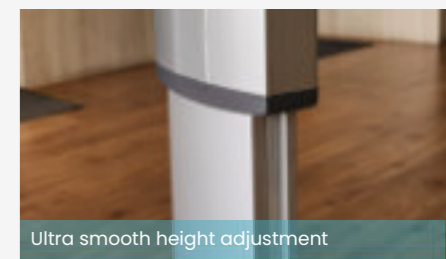


# CT212

## CARDIAC TABLE

### FEATURES

- Anti-microbial compact laminate (Phenolic)
- User centric worktop design
- Anti-corrosion structure, full anodised aluminium
- Height adjustment gas spring with safety overriding feature
- Low friction height adjustment mechanism
- 30kg worktop loading capacity with 1.5x safety factor
- 50mm castors with large brake lever
- Compatible with beds equipped with 5<sup>th</sup> wheels
- Low profile base for geriatric bed
- Modular construction with full replacement parts
- Dimensions: L900mm x W450mm x H760-1100mm





Designed & manufactured in Singapore



Designed & manufactured in Singapore

# CT15

## CARDIAC TABLE

### FEATURES

- 10mm thickness compact laminate (Phenolic) worktop with anti-microbial
- User centric worktop design
- Anti-corrosion structure in full anodised aluminium
- Height adjustment gas spring with safety overriding feature
- Low friction height adjustment mechanism
- 30kg worktop load capacity with 1.5x safety factor
- 50mm castors with large brake lever
- Low profile base for geriatric bed
- Modular construction with full replacement parts
- Dimensions: L850mm x W400mm x H740-1080mm



Moisture Resistant non-splinter worktop



Ultra smooth height adjustment mechanism



Low profile castors with large locking lever

# CT08

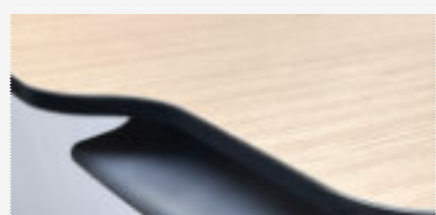
## CARDIAC TABLE

### FEATURES

- Anti-microbial compact laminate (Phenolic)
- User centric worktop design
- Full aluminium anodised anti-corrosion structure
- Height adjustment gas spring with safety overriding feature
- Low friction height adjustment mechanism
- 30kg worktop load capacity with 1.5x safety factor
- 40mm castors with visible red locking lever
- Low profile base for geriatric bed
- Modular construction with full replacement parts
- Dimensions: L800mm x W400mm x H760-1080mm



Moisture Resistant non-splinter worktop



Ultra smooth height adjustment mechanism

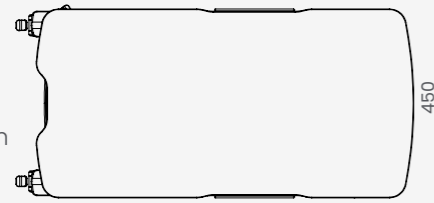


Low profile castors with red locking lever

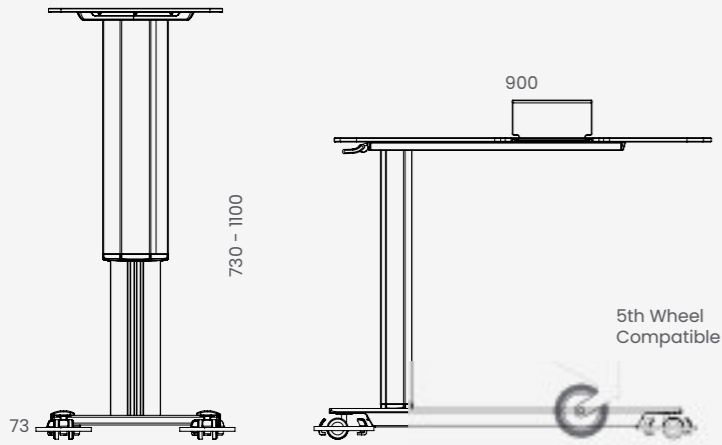
TECHNICAL SPECIFICATIONS

# CT212

**Length** 900 mm  
**Width** 450 mm  
**Height** 730 - 1100 mm



Top



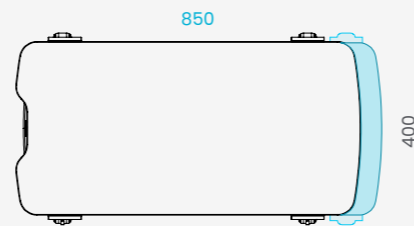
Side

Front

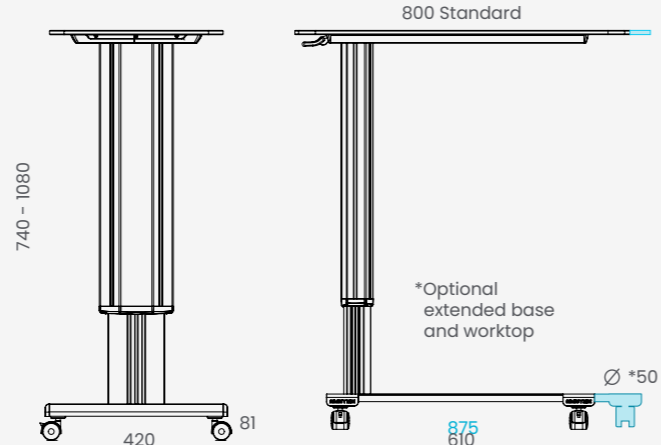
5th Wheel Compatible

# CT15

**Length** 800 mm  
 850 mm (Ext.)  
**Width** 400 mm  
**Height** 740 - 1080 mm



Top

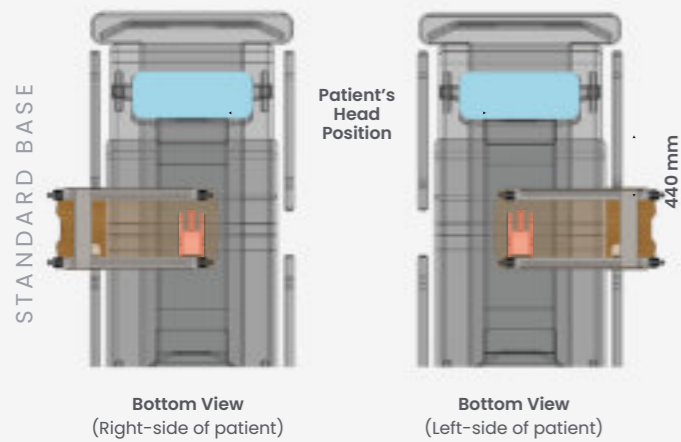


Side

Front

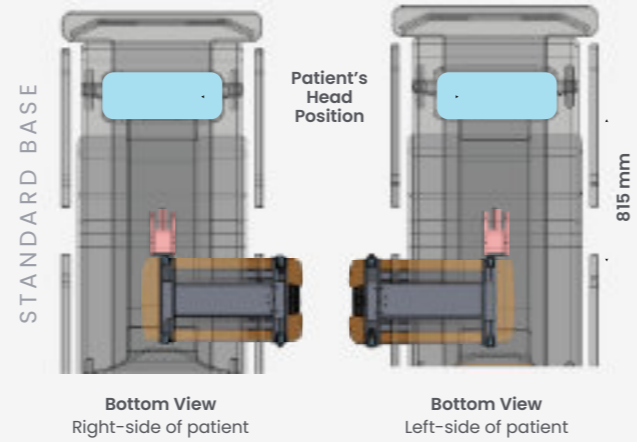
\*Optional extended base and worktop

■ 5th WHEEL COMPATIBILITY



Bottom View (Right-side of patient)

Bottom View (Left-side of patient)



Bottom View Right-side of patient

Bottom View Left-side of patient



Slides in-between 5<sup>th</sup> Wheel equipped beds

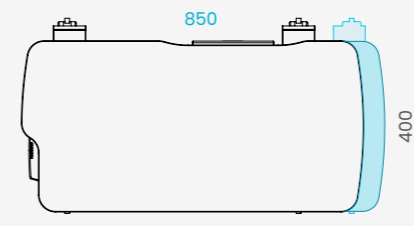
Product can be customized according to your preferences for color, dimensions, and configuration. Subject to minimal order quantities (MOQ). Please contact our sales department to discuss your specific requirements



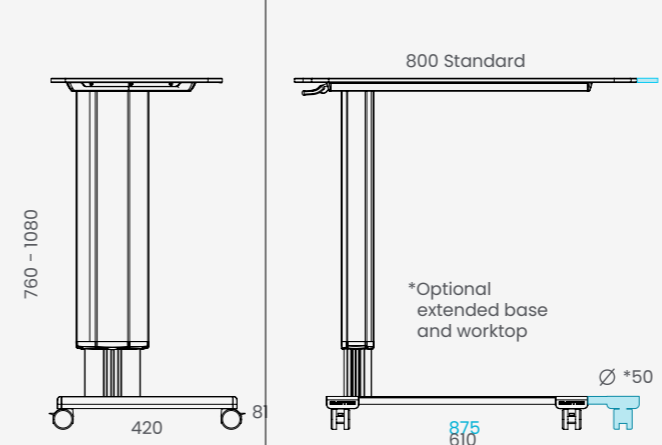
Size, Colour Finishes, Hardware

# CT08

**Length** 800 mm  
 850 mm (Ext.)  
**Width** 400 mm  
**Height** 760 - 1080 mm



Top

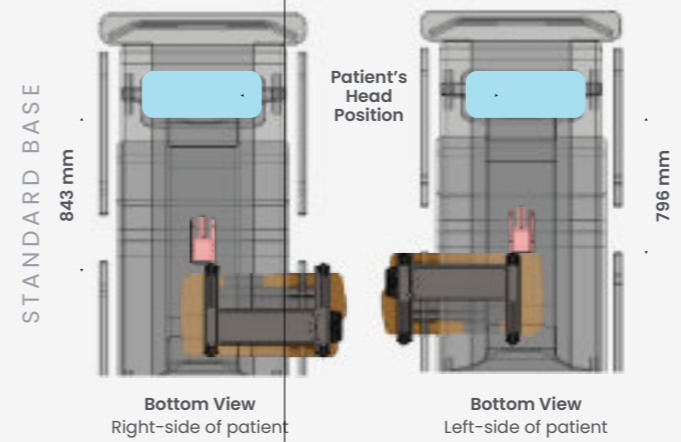


Side

Front

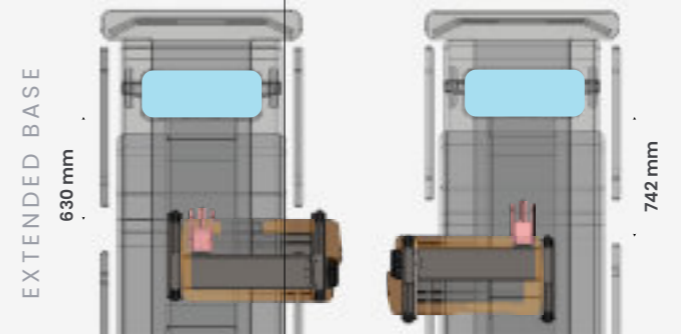
\*Optional extended base and worktop

■ 5th WHEEL COMPATIBILITY



Bottom View Right-side of patient

Bottom View Left-side of patient



EXTENDED BASE 630 mm

742 mm

SUGGESTED OPTIONS



Aluminium flip-up mirror (Non-glass; Closed)



Aluminium flip-up mirror (Non-glass; Opened)



Height adjustment spring w/ safety overriding feature



Optional: Extended Base and Worktop options

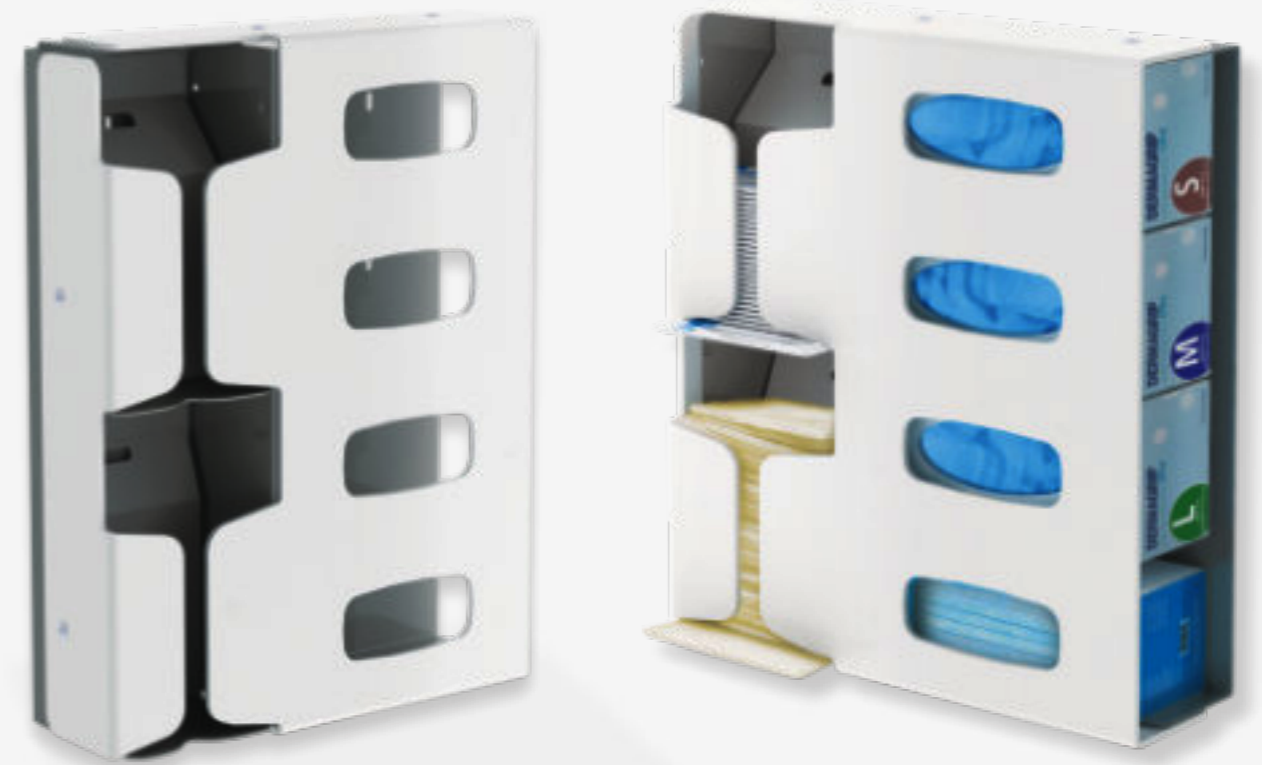


Ultra smooth castor with enlarge brake pedal

## Optional Features

- Extended base and worktop for 5<sup>th</sup> wheel
- Premium full aluminium flip-up mirror (non glass)
- Integrated "T-slots" for add-on accessories
- Special request for high matching colour





WD-SERIES  
designed and manufactured in Singapore

# M.A.G.S. PPE Dispenser

Modular PPE solutions for seamless healthcare operations

## Feature Highlights

- Alcohol-resistant silkscreen info-graphics PPE labelling
- Front housing in 5mm ABS high-impact resistant plastic
- Anti-corrosion aluminium chassis with PVDF coating
- Individually CNC chamfered edges to eliminate sharp edges
- Ease of access to PPE, First In First Out dispensing (FIFO)
- Adjustable spacer to suit different PPE manufacturers
- Modular design for interchangeability and future-proof
- Surface, recessed mounted or integrated as part of furniture
- Simple and clean design will blend well with most interiors
- Customizable to suit workflow and new project requirements



No sharp edges (CNC Machine)



First in, First out (FIFO) Dispensing

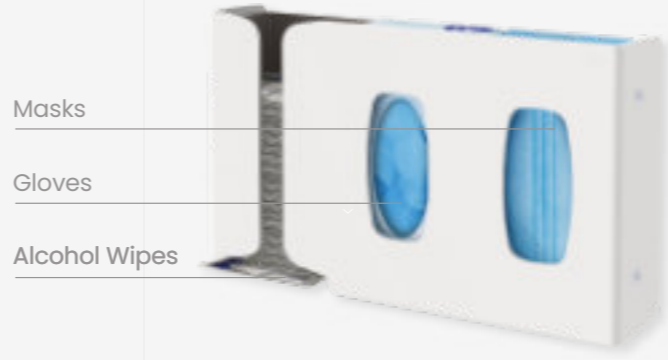
# Loading Features

## 1 Loading Configuration: Front Swing Door Opening ●



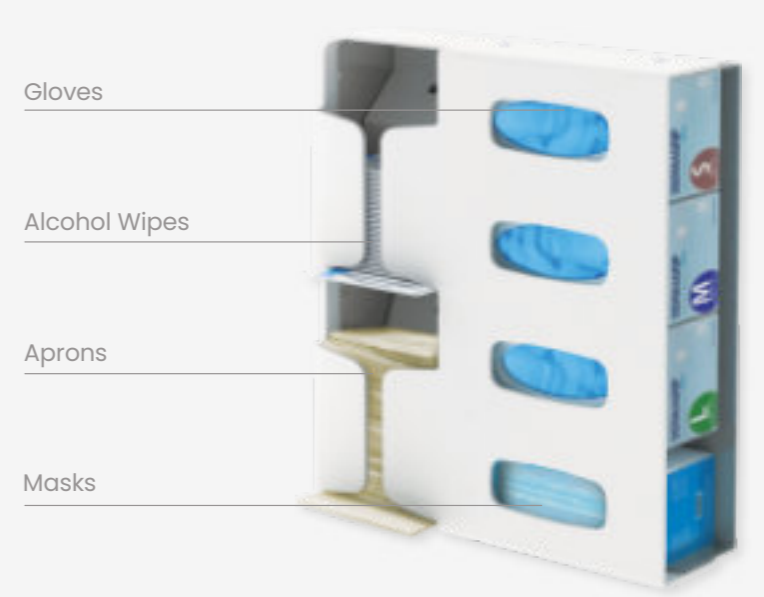
- Gloves
- Aprons
- Gowns
- Alcohol Wipes
- N95 Masks (3M-8210)
- Surgical Face Masks
- N95 Mask (3M-1870+) and 3M Surgical Mask 1870+

## 2 Loading Configuration: Top Opening ●



- Masks
- Gloves
- Alcohol Wipes

## 3 Loading Configuration: Front/Side Opening ●●

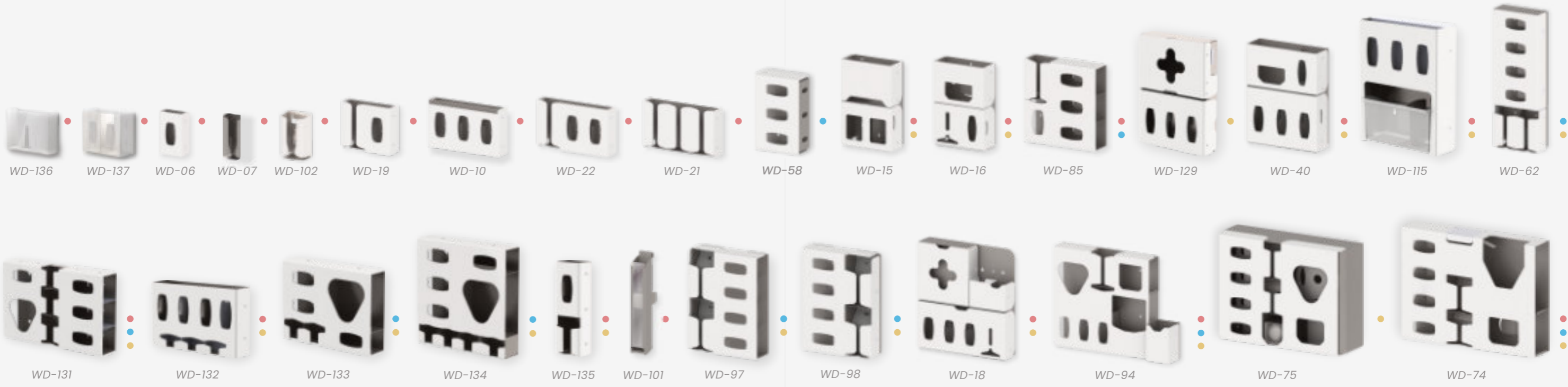


- Gloves
- Alcohol Wipes
- Aprons
- Masks

### Different Variants

Modular PPE dispenser solutions provide healthcare facilities with the tools they need to ensure seamless daily operations

- Top loading
- Side loading
- Front loading



### Customisation

The unit can be customized according to your preferences for color, dimensions, and features. Please contact our sales department to discuss your specific requirements



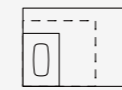
# Different Variants

Modular PPE dispensation solutions for seamless daily healthcare operations

Model	Description	WIDTH (mm)	HEIGHT (mm)	DEPTH (mm)	LOADING
WD-06	Glove	149	251	95	●
WD-07	Glove, Unibody	130	240	90	●
WD-10	Glove SML	423	250	95	●
WD-15	N95 Mask 1870, 1850s X2	300	463	138	●
WD-16	Aprons, Masks, KC300	300	448	133	●
WD-18	SML Glove, Iso Gown, Aprons, Handrub, Wet Wipes	584	636	129	●●
WD-19	Aprons, Glove	286	251	95	●
WD-21	Aprons, Aprons, Aprons	423	252	95	●
WD-22	Aprons, Glove, Masks	423	251	95	●
WD-40	KC300 Mask, SML Glove	424	529	135	●
WD-58	Masks, Glove, Glove, Thicker	260	402	115	●
WD-62	(Left Loading) SML Glove, Masks, Wipes, Aprons	302	823	120	●●
WD-74	SML Glove, Masks, Wipes, Aprons, N95, Iso Gown, Visor Mask	800	601	150	●●●
WD-75	SML Glove, Masks, Wipes, Aprons, N95, Iso Gown, Visor Mask (Swing Door)	810	604	250	●
WD-85	SML Glove, Aprons, Masks	425	442	115	●●
WD-94	SML Glove, Iso Gown, Aprons, Wipes, Wet Wipes, N95	822	625	152	●●●
WD-97	(Left Loading) SML Glove, Masks, Wipes, Aprons	410	544	120	●
WD-98	(Right Loading) SML Glove, Masks, Wipes, Aprons	410	544	120	●
WD-101	Flexible Suction Catheter	80	529	128	●
WD-102	Single Glove w/ Hook (for medical rail)	140	240	110	●
WD-115	SML Glove, Tilt Bin (for misc. Items)	440	560	140	●●
WD-129	SML Glove, Iso Gown	424	578	115	●
WD-131	SML Glove, Iso Gown, Masks, Wipes, Aprons, N95	660	420	120	●●●
WD-132	SML Glove, Masks, Wipes, Aprons	530	320	120	●●
WD-133	SML Glove, Iso Gown, Masks, Wipes, Aprons	520	410	120	●●
WD-134	SML Glove, Iso Gown, Masks, Wipes, Aprons	570	520	110	●●
WD-135	Glove, Aprons	150	450	120	●●
WD-136	Hair Net	290	250	80	●
WD-137	Glove, Masks	290	250	132	●

Rev. 2 November 2023

● Top loading ● Side loading ● Front loading



Different sizes of PPE



Alcohol Resistant  
Silkscreen Labels



Impact resistant  
plastic shield



Adjustable metal  
tongue for snug fit



Modular design  
for interchangeability



Robust  
aluminium chassis



Singapore

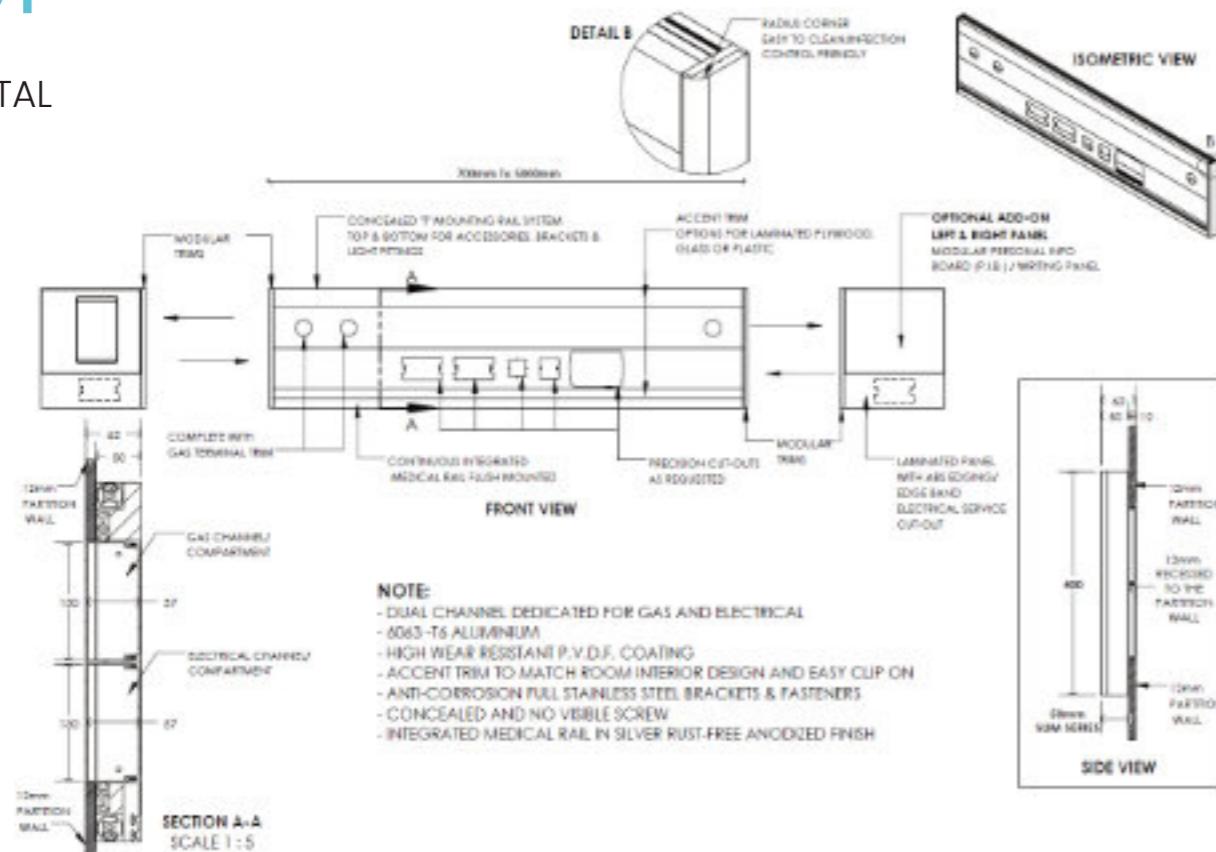
info@systemz.sg

SYSTEMZ



# BH01

HORIZONTAL  
BEDHEAD  
PANEL



# BH01

HORIZONTAL  
BEDHEAD  
PANEL

Purposefully designed and future-proofed bedhead panel with streamlined installation and easy maintenance

- Comply with Health Technical Memorandum HTM\_2015 and HTM\_08-03 for bed head services
- 100% locally fabricated (Singapore made) using CNC machines for more precise fabrication and shorter turnaround time.
- Offsite pre-fabricated Bed Head Panel frame and structure to ensure clean, fast and consistent installation
- Moisture resistant anti-termite accent trims & panels
- Anti-corrosion full stainless brackets and fasteners
- High scratch & wear resistant PVDF coating.
- Concealed fasteners
- Easy to wipe clean & maintain
- Promote high standard of infection control
- 6063-T6 Aluminium extrusion profiles for added durability and longevity.
- 3D BIM Model, CAD, CAM, CAE ready



2-Bed continuous BHP



3-Bed continuous BHP

## BH09

### HORIZONTAL BEDHEAD PANEL

#### Continous BHP for surge demand bed increase

- Air tightness compliance (air leakage test, air pressure test, smoke test).
- Applicable also for rooms with negative and positive pressure using proprietary sealing gaskets.



## BH V VERTICAL BEDHEAD PANEL

#### Purpose design and built future-proof BHP to streamline installation and maintenance

- 100% locally fabricated (Singapore made) using CNC machines for more precise fabrication and shorter turnaround time
- Offsite pre-fabricated Bedhead Panel frame and structure to ensure clean, fast and consistent installation
- Moisture resistant anti-termite panels
- Anti-corrosion full stainless brackets and fasteners
- High scratch and wear resistant PVDF coating
- 6063-T6 Aluminium extrusion profiles for added durability and longevity
- 3D BIM Model, CAD, CAM, CAE ready

# BH V

VERTICAL  
BEDHEAD  
PANEL



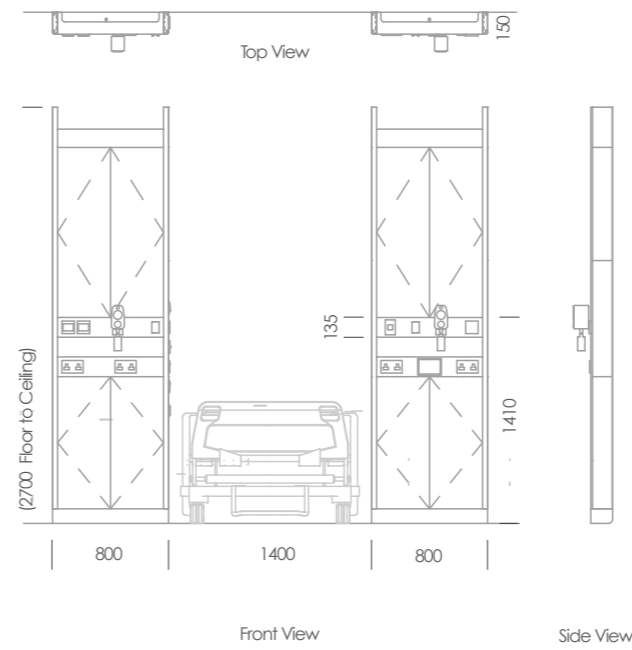
BHP Ambient lighting  
Non-glaring



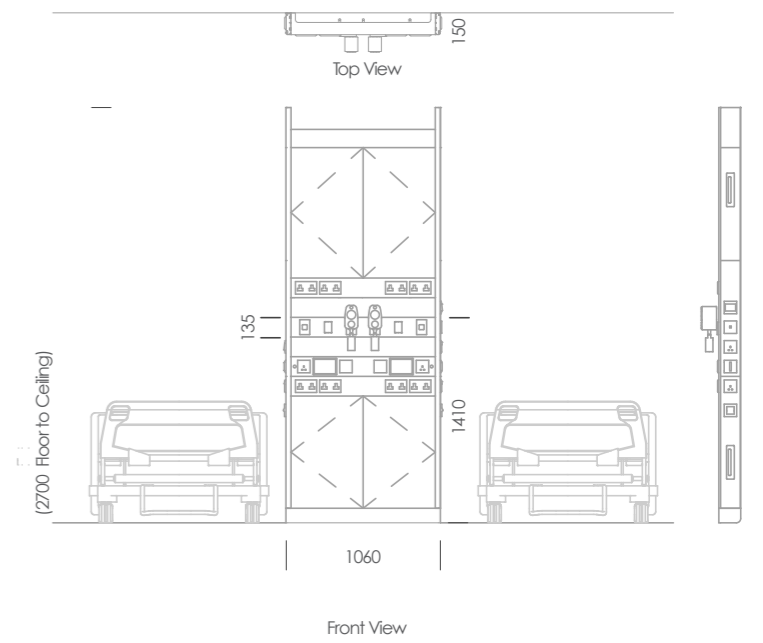
# BH V VERTICAL BEDHEAD PANEL

## Technical Specs

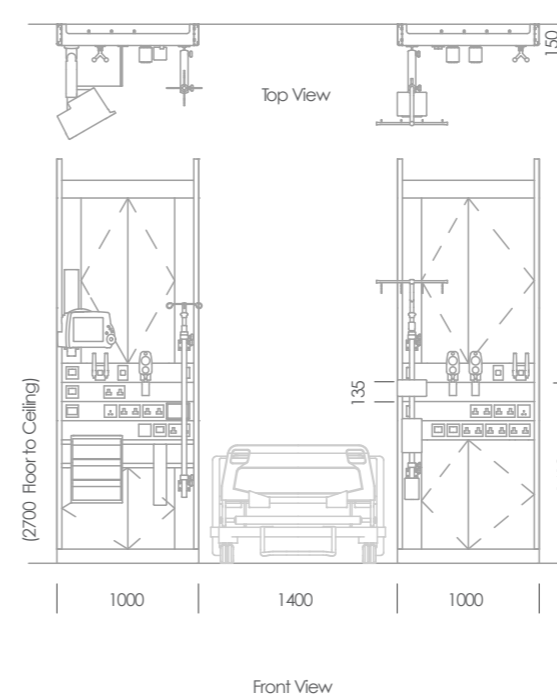
### Single Room



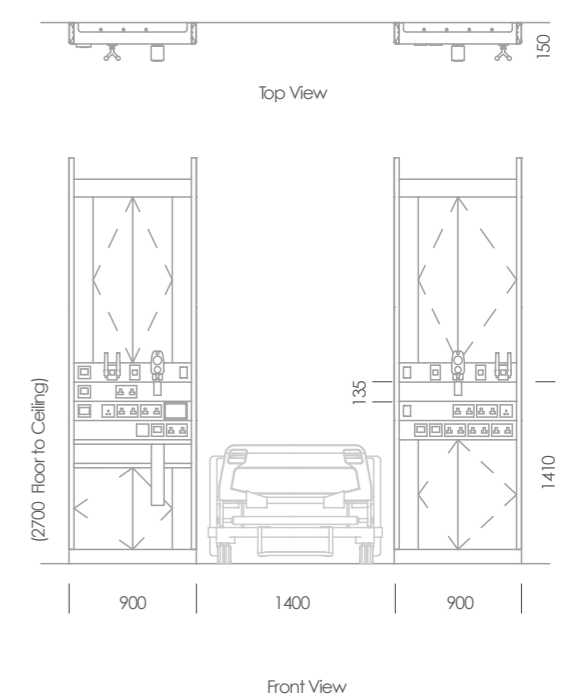
### Cohort Room



### ISO & ICU Room



### HD Room



# BHDW

## HORIZONTAL BEDHEAD PANEL

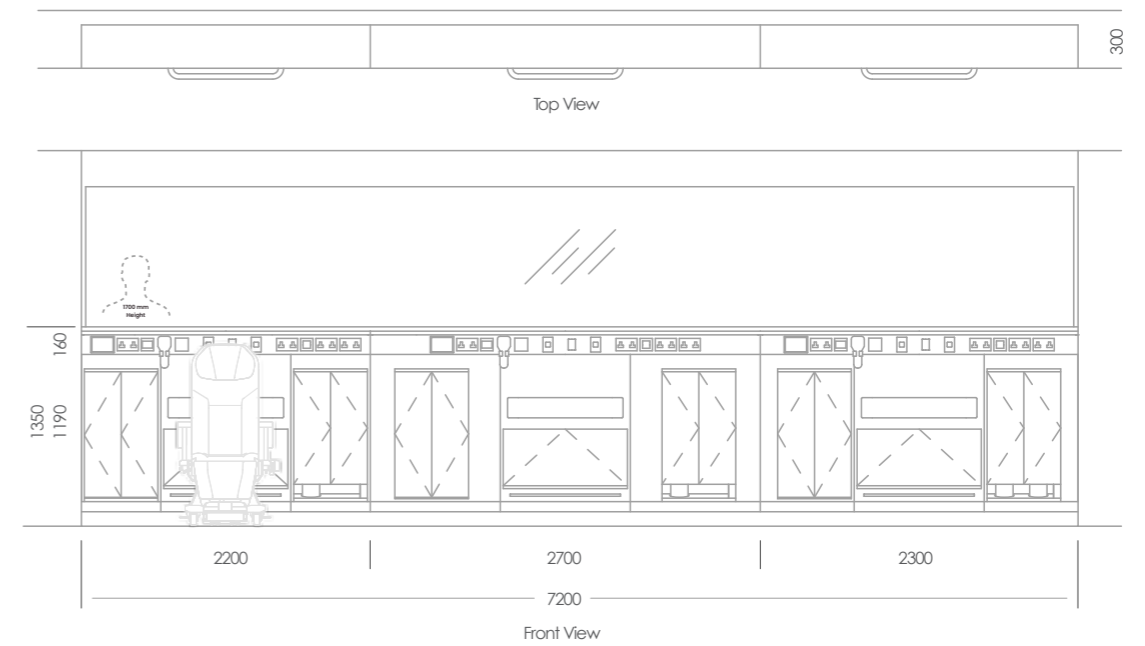
- With concealed dialysis cabinet
- For wards with half wall
- Detachable screen



# BHDW | HORIZONTAL BEDHEAD PANEL

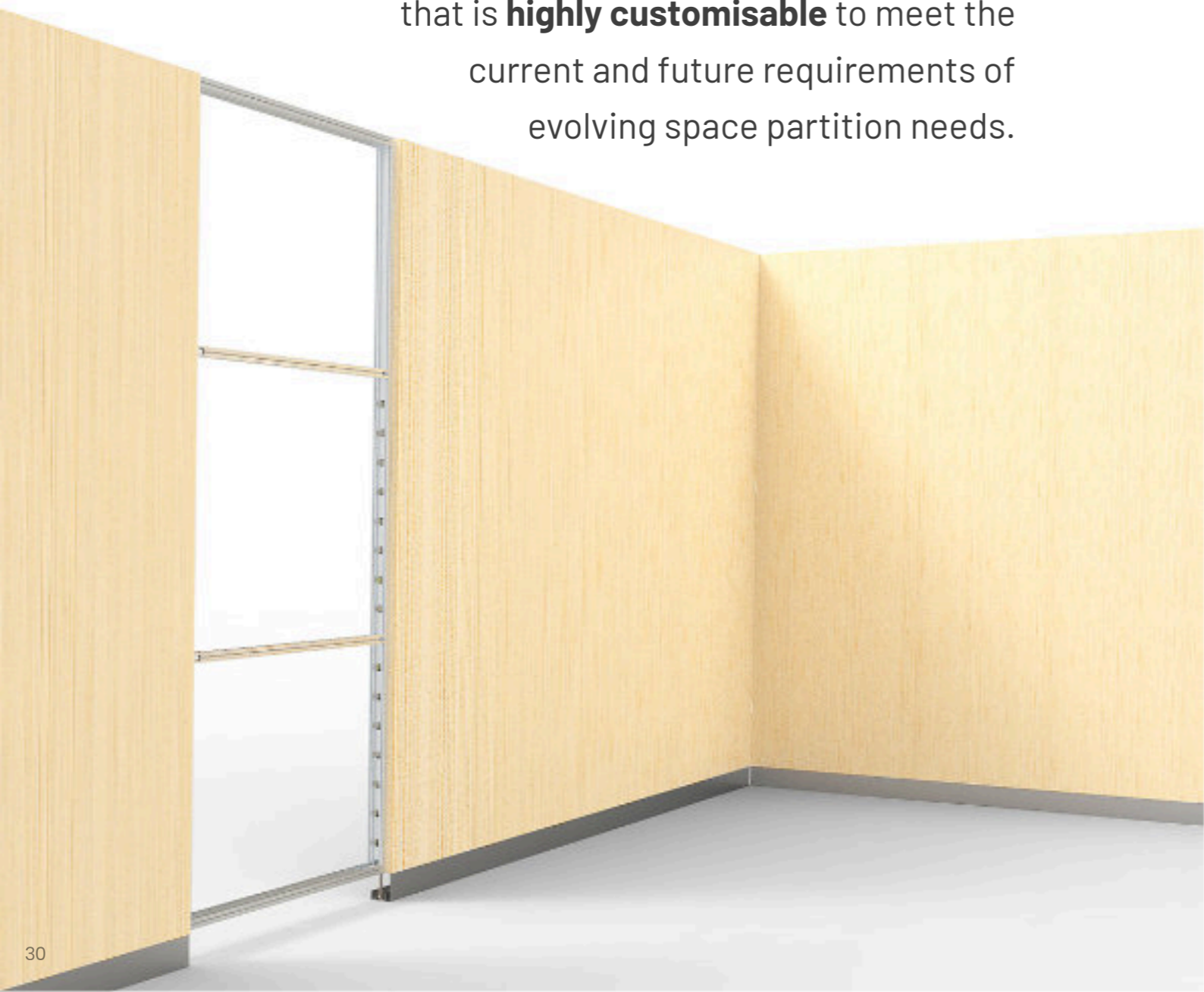
- With concealed dialysis cabinet

## Technical Specs



INTRODUCING..  
**THE WAPS MODULAR WALL SYSTEM**

The SYSTEMZ MODULAR WALL (WAPS) is a flexible and modular wall panel system that is **highly customisable** to meet the current and future requirements of evolving space partition needs.



SCAN QR  
TO KNOW MORE



As a Modular system, WAPS's design robustness allows for changes to the location, size and finish while retaining the integrity of its structure for reuse.

That means that the majority of the wall panel system can be fully reused as well as extended, retaining its asset value. In the event of relocation, redesign or repairs, it is done with the least disruption and downtime as compared to any other drywall or demountable system.



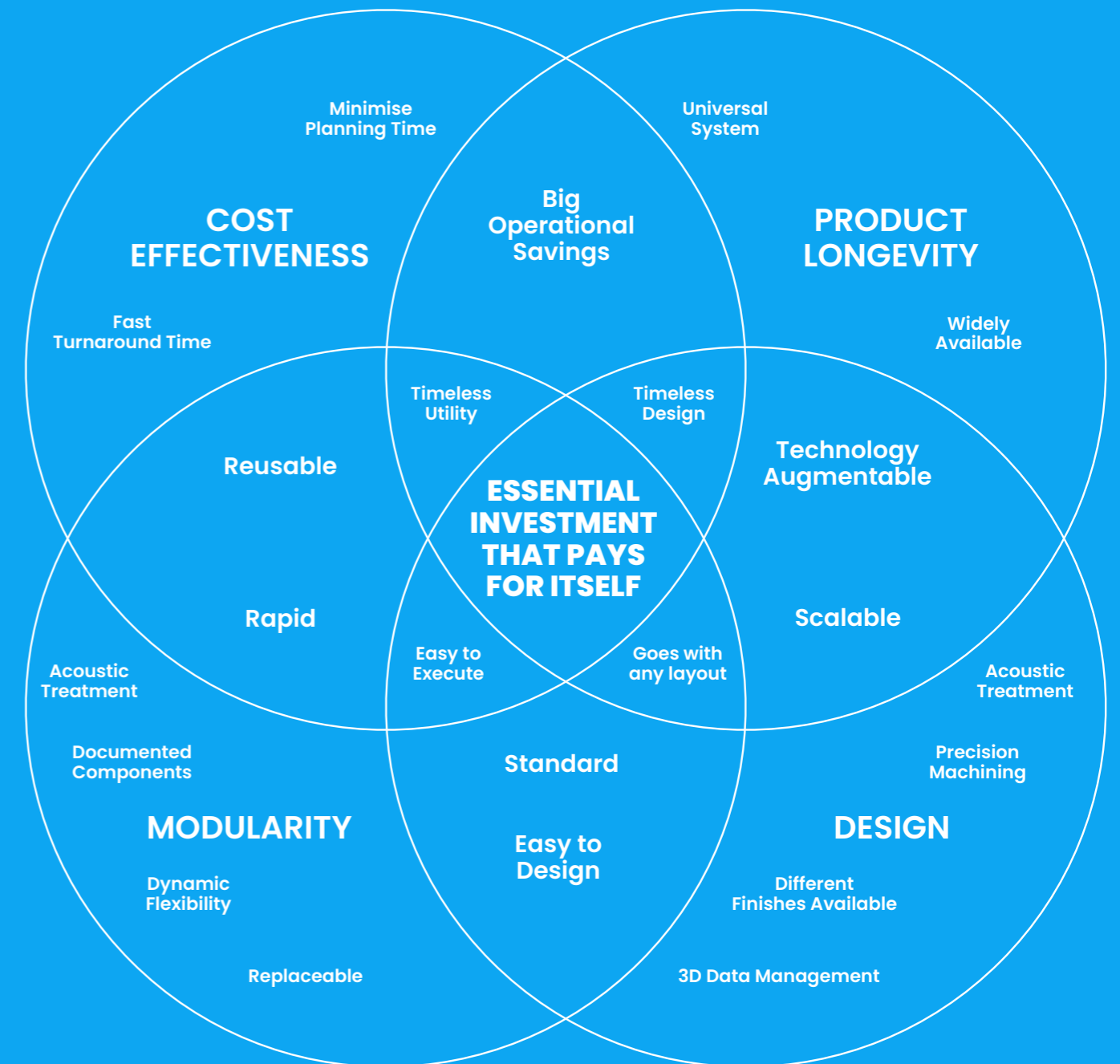


## DESIGN

All SYSTMZ WAPS' major parts and components required for maintenance or repairs are made available and securely stored for access to authorised personnel. Technical data of the modular wall system, panels and components are kept securely for easy download in future via the Internet.



## WHY WAPS MODULAR WALL?



The WAPS Modular Wall System is a highly flexible, and durable solution that is ideal for healthcare and high-end construction environments, offering compositional flexibility, ease of assembly, and long-term

# DESIGN



### MATERIALS

The external walls of the WAPS Modular Wall System are made from materials that can have antibacterial treatment, making them ideal for healthcare settings. This treatment simplifies cleaning operations and guarantees a completely sanitised space. Furthermore, the panels are joined together with an antibacterial silicon gasket that maintains a continuous and seamless surface.



### MAINTAINABLE

The WAPS Modular Wall System lets you access the wall cavities quickly by just removing the coverings. This feature reduces interruptions and downtime, making it more convenient to use.



### STRUCTURE

The aluminium profile structure of the WAPS Modular Wall System is prefabricated to simplify and accelerate the assembly process.



### ERGONOMICS

The design of the WAPS Modular Wall System promotes ergonomic patient care in clinics while avoiding any obstruction to the bed's position. The equipment is strategically placed to enhance visibility and ease of use for the operator. In addition to healthcare settings, the system is also suitable for the construction needs of luxury hotels and the hospitality industry.

The system seamlessly integrates design and technology for optimal functionality.



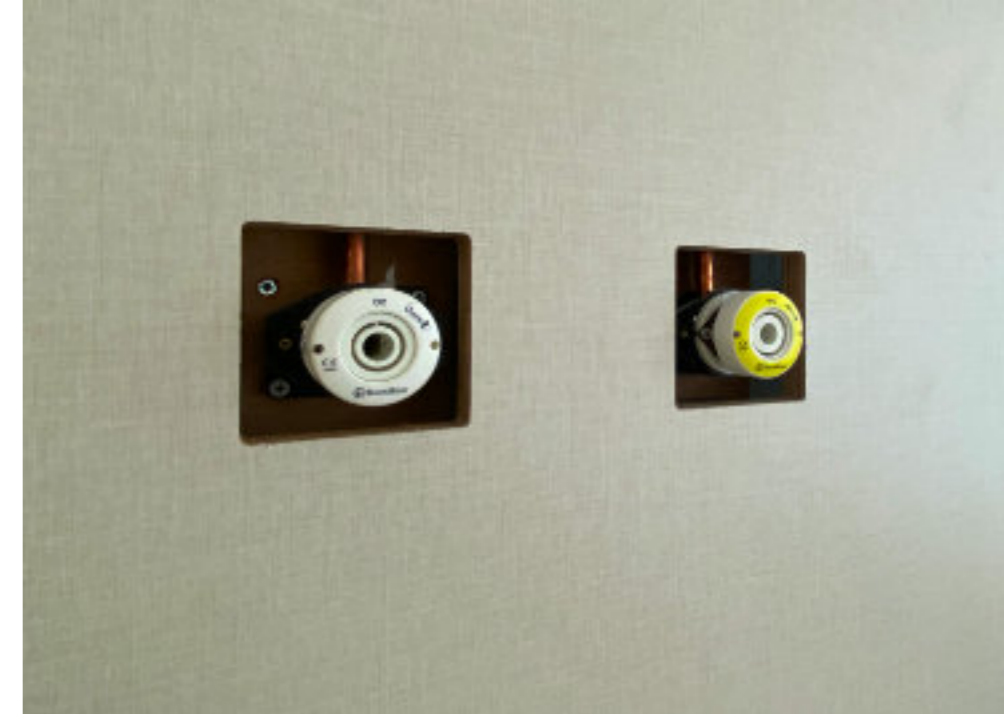
The WAPS Modular Wall System is an excellent long-term investment for luxury construction, including 5-star hotels and other high-end installations. Its high-quality materials, durability, and sustainability ensure that it will stand the test of time, delivering a lasting return on investment. Additionally, its compositional flexibility, ease of assembly, and ergonomic design make it an ideal choice for luxury settings where aesthetics, functionality, and guest comfort are paramount.

**Alexandra Hospital**  
**12 Bedder Ward**

*378 Alexandra Rd,  
Singapore 159964*

The National Health Group, the entity behind Alexandra hospital, has commissioned to build a ward which transforms into a surge bed system that can accommodate growing numbers of sick patients. This addresses the pain point of exceeding patient capacity due to emergency surge situations, a scenario that came to light during the COVID-19 pandemic.

The construction of the ward adheres to the guidelines of Alteration & Addition (A&A) requirements. The WAPS modular wall system was an ideal choice because it complies with DFMA standards, enabling efficient manufacturing and assembly. Each module was pre-fabricated with accurate provisions to meet the project's requirements.



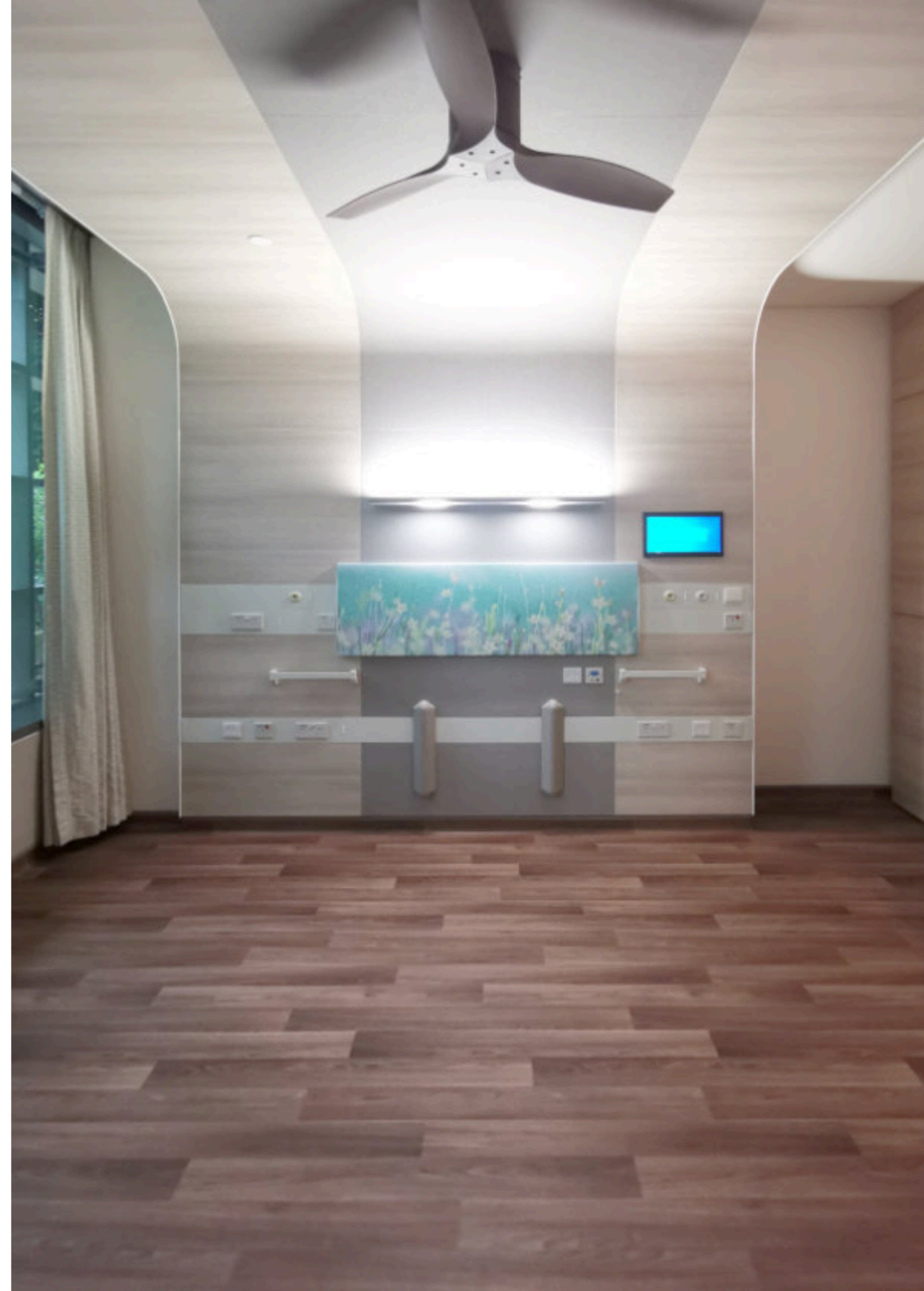
Compared to traditional drywall construction, the WAPS modular wall system can be assembled on-site three times faster. This not only saves on labor costs but also avoids the expense of disassembly due to adjustments and internal repairs, which is often required with conventional methods.

The construction timeframe to build this smart ward's structural system only took a matter of weeks. Within the timeframe, M&E provisions found little to no effort in connecting lines and conduits within the system.

For little shifts in requirements found within the wall, the panel's can be easily popped open giving access to the system within.



The result is a seamless structure that marries smart technology within an existing room. Proprietary data cables are embedded within the room powering the technology at the snap of a finger.





## PRISM-01

### Feature Highlights



#### Seamless Design

- Anti-microbial Coating
- No Sharp Edges
- Enhanced Infection Control

#### Innovative Luminaire

- High Efficiency LED Modules
  - Reduced Power Consumption
  - Reduced Glare
- DALI Dimmable (optional)
- Customizable Scenes (optional)

#### Space Grade Aluminium Structure

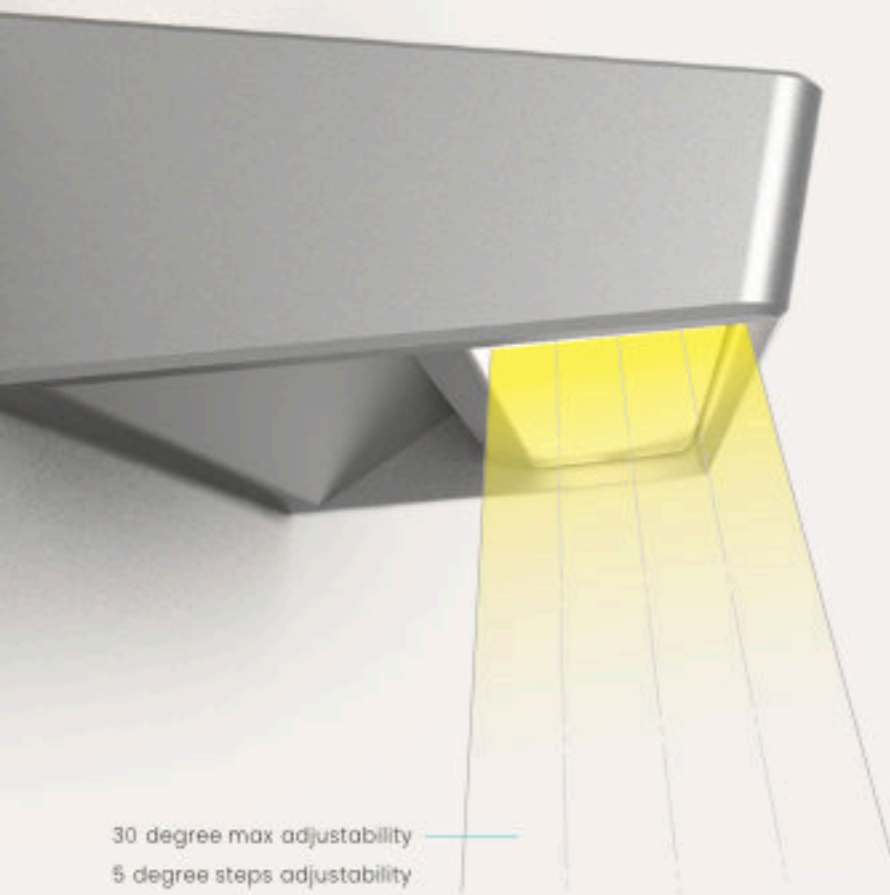
- Anti-rust/ corrosion
- PVDF coated

#### Human Centric Lighting

- Tunable white options
- Adjustable bottom beam
- Enhanced patient experience

# Light Modes

## Adjustable Beam Angles

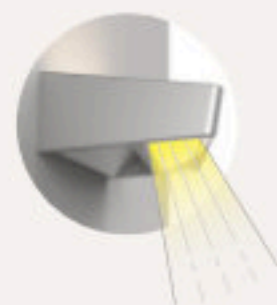


### On-demand lighting

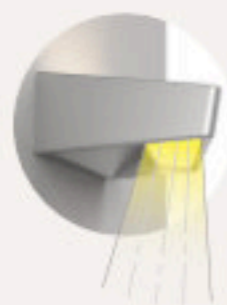
- Personalised lighting
- 5 degree 6-step adjustability
- Clearly defined



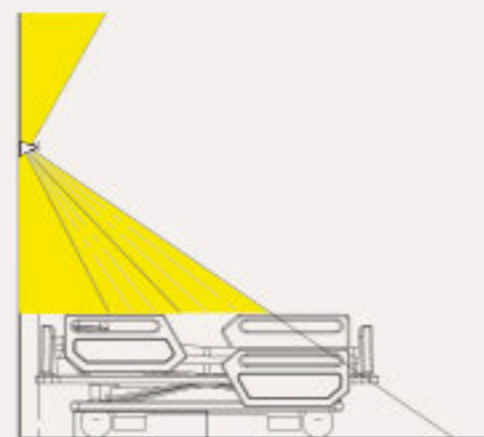
30 degree max adjustability  
5 degree steps adjustability



Tilt-Neutral Examination Light



Tilt-Forward Reading Light

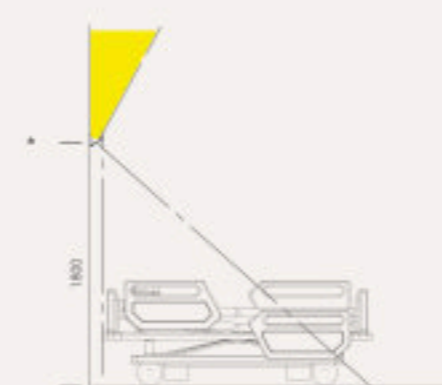


## Light Scene Options

### Ambient Light

#### Up-lighting

- CCT: 3000K - 4000K
- CRI > 90
- 100 lx

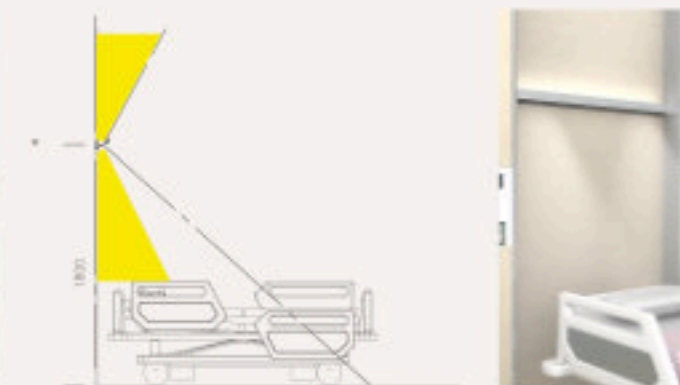


It is rare to require this level of lighting but, if required, a portable examination light must be used.

### Reading Light

#### Neutral

- CCT: 4000K
- CRI > 90
- 300 lx

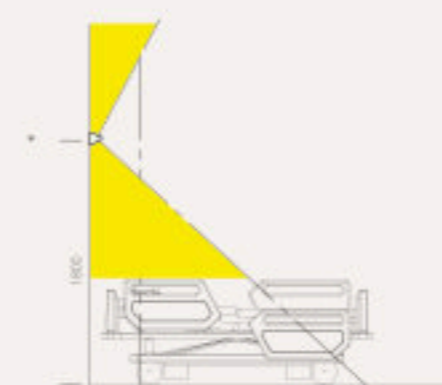


To be controlled by the patient and to be provided over the patient's activity.

### Examination Light

#### Uplighting + Forward-Tilt

- CCT: 4000K
- CRI > 90
- 100 lx

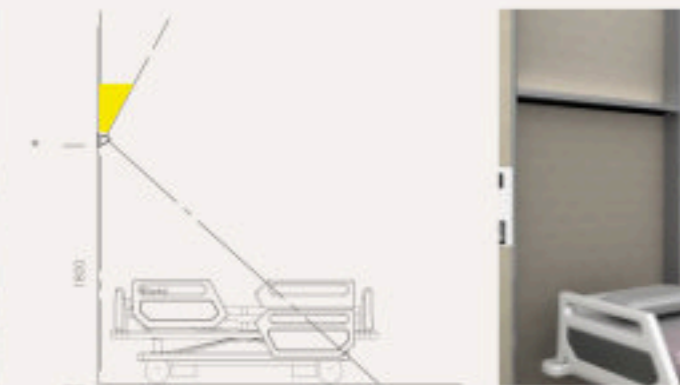


Luminaires to use lamps with a colour rendering index of CRI > 90.

### Night Ambient Light

#### (Optional)

- CCT: 3000K - 4000K
- CRI > 90
- 5 lx



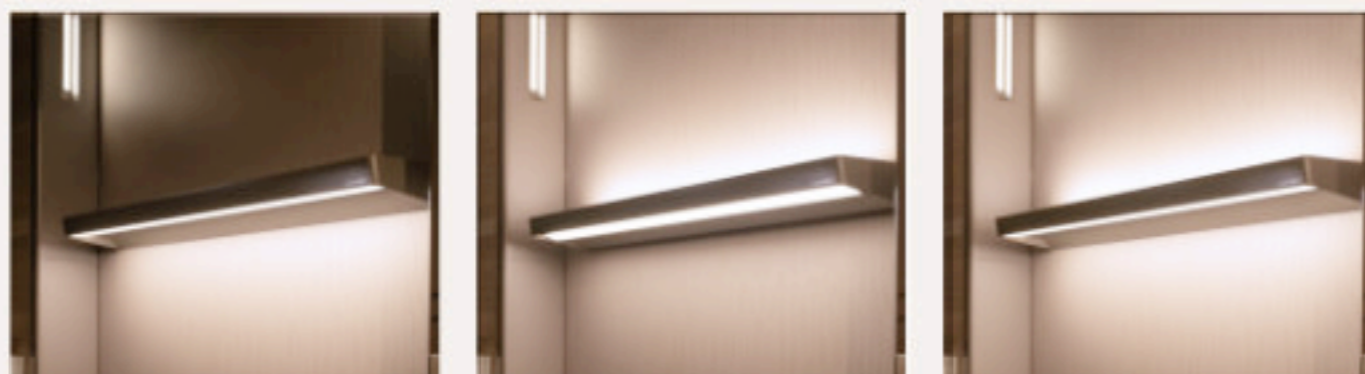
To be provided at the general ward area with a maximum of 0.5 lux over the pillow.

## Seamless Design

- Anti-rust aircraft grade aluminium body
- Precision CNC end-trims
- Polyvinylidene fluoride (PVDF) coated to user's choice of colours
- Anti-microbial coating and easy to clean
- Can be mounted on the wall conveniently
- Effortless serviceable drivers and LED modules

## Optics

- Optical diffuser covers in Makrolon PC
- Special fluted design for asymmetric light diffusion
- Highly efficient LED modules
- Adjustable bottom beam angle for better light spread and reduced glare
- DALI dimmable (optional)
- Turnable white 3000K - 6500K (optional)



Tilt-Neutral  
Reading Light

Tilt-Neutral  
Examination Light +  
Ambient Light

Tilt-Forward  
Reading Light +  
Ambient Light

## Technical Specifications

# PRISM-01

Width 620-1200 mm

Depth 147 mm

Height 65 mm

\*Available in 3000k temperature LED modules upon request and if MOQ is met.

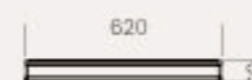
### 2ft Luminaire



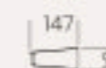
TOP VIEW



ISOMETRIC VIEW



FRONT VIEW



SIDE VIEW

Option 1: No Dimming  
Number of circuits: 2  
Uplight: 4000k\*  
Downlight: 4000k\*

Option 2: Phase-Cut dimming  
Number of circuits: 2  
Uplight: 4000k\*  
Downlight: 4000k\*

Option 3: DALI dimming  
Number of circuits: 3  
Uplight: 4000k\*  
Downlight: 4000k\*

Option 4: DALI dimming w/Tunable White  
Number of circuits: 3  
Uplight: 2700k - 6000k  
Downlight: 2700k - 6000k

### 3ft Luminaire



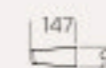
TOP VIEW



ISOMETRIC VIEW



FRONT



SIDE VIEW

Option 1: No Dimming  
Number of circuits: 2  
Uplight: 4000k\*  
Downlight: 4000k\*

Option 2: Phase-Cut dimming  
Number of circuits: 2  
Uplight: 4000k\*  
Downlight: 4000k\*

Option 3: DALI dimming  
Number of circuits: 3  
Uplight: 4000k\*  
Downlight: 4000k\*

Option 4: DALI dimming w/Tunable White  
Number of circuits: 3  
Uplight: 2700k - 6000k  
Downlight: 2700k - 6000k

### 4ft Luminaire



TOP VIEW



ISOMETRIC VIEW



FRONT VIEW



SIDE VIEW

Option 1: No Dimming  
Number of circuits: 2  
Uplight: 4000k\*  
Downlight: 4000k\*

Option 2: Phase-Cut dimming  
Number of circuits: 2  
Uplight: 4000k\*  
Downlight: 4000k\*

Option 3: DALI dimming  
Number of circuits: 3  
Uplight: 4000k\*  
Downlight: 4000k\*

Option 4: DALI dimming w/Tunable White  
Number of circuits: 3  
Uplight: 2700k - 6000k  
Downlight: 2700k - 6000k

### Notes

This unit can be customised to your preferences in light output, finishes and size. Light output (lumens) of luminaire depends on option chosen.

Feel free to contact our sales department for your needs.

- Size
- Colour
- Finishes

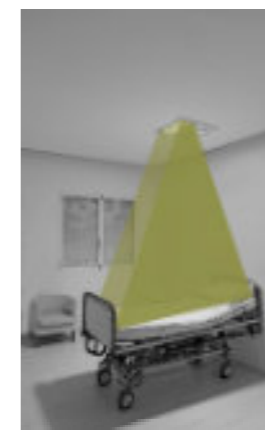




**SYSTEMZ**

Intelligent Hospital LED

# MEDICAL 3-IN-1



1. Examination:  
700 lx (max. 1000 lx)



2. Ambient:  
60lx



3. Reading:  
250lx

Intelligent Hospital LED

# MEDICAL 3-IN-1

## Luminaire body

Made in white stove-enamelled steel sheet

The electrical connection is made to a 5-pole quick electrical connector. Dimmable version with 3 different DALI addresses. According to the light outputs.

Main voltage: 220-240 V / 50-60 Hz.

Power factor Corrected  $\phi$ : 0,95.

□ Ceiling cut: 580x580 mm.

Useful life: 25°C: 72,000 hours

Installation: recessed for easy installation thanks to the quick anchoring system included in the product.

## Beam Angle

General lighting, reading and ambient. Each designed for specific task.

## Compliance

Compliant to AS/NZS 1680.2.5:1997 Cyanosis Observation Index, (COI < 3.3). Cyanosis is a visual cue of an underlying medical condition through observation of "normal" and "blueish" skin tones.

Colour rendering index (CRI) >90, and CCT light temperature 4000 K  $\pm$ 300 K.

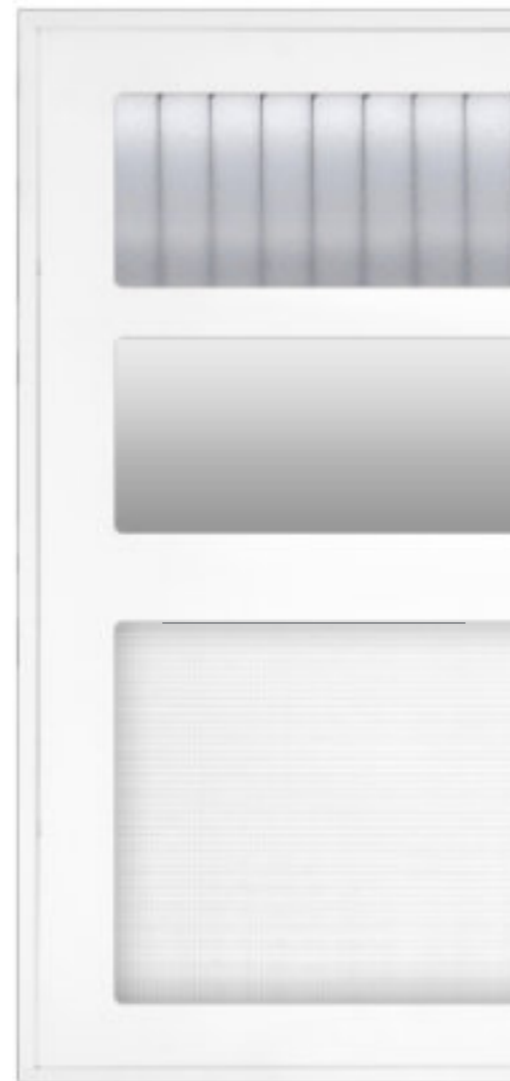
Warranty: 3-years



Complete view 1



Complete view 2



Detail

Approval marks for lighting components:



# LED FUNCTIONALITY FOR HOSPITALS

Design Registration No.: 30202250122P

Scan QR to access web product page ▶



## Optics (cont.)

### Reading lighting:

Formed by a high performance PMMA diffuser. Specular aluminum reflector with a high diffusion degree, asymmetric with lattice to avoid glare in both directions.

### Room lighting:

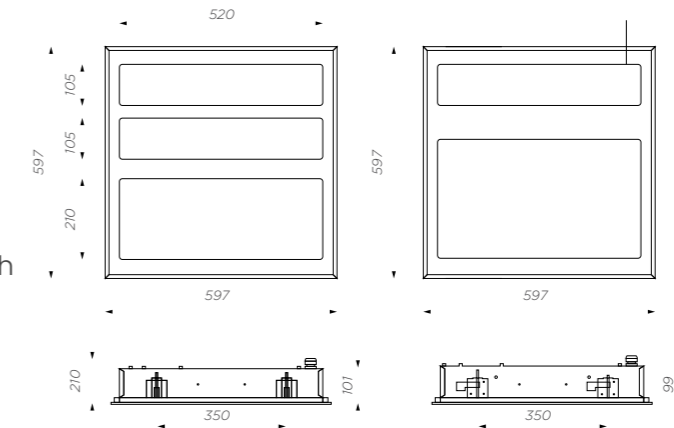
Formed by a high performance PMMA diffuser, specular aluminum reflector, asymmetric, with high luminance control to avoid glare in patient's vision.

### Examination lighting:

Formed by a high transparency microprismatic diffuser with an hexagonal micropyramid matrix base for effective dazzle control. Ultra-white reflector with very high reflectance.

## Dimensions

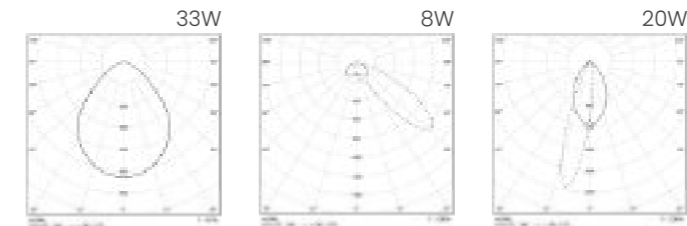
Measurements in millimeters



## Installation drawing



Luminaire at a distance of 550 mm from the bed headboard for an installation height of 2.500 mm.



1. Examination: 700 lx (max. 1000 lx)  
2. Ambient: 60lx  
3. Reading: 250lx

## Luminaires

Light source W	Lighting	Colour temp.	CRI	Output	Kg
MEDICAL 3-in-1 . 3 outputs . Headboard LED luminaire for recessed mounting . White matt colour					
	Examination	4000K	90	4,550 lm	12
	Room	4000K	90	1,850 lm	
	Reading	4000K	90	1,050 lm	
MEDICAL 2-in-1 . 2 outputs . Headboard LED luminaire for recessed mounting . White matt colour					
	Examination	4000k	90	5,000 lm	12
	Reading	4000k	90	1,050 lm	

HOSPITALS LED • MEDICAL3-IN-1

HOSPITALS LED • MEDICAL3-IN-1



THE SILENTIA SCREEN SYSTEM

privacy screen



## Keep it *Clean*™ for a safer health care setting

At Silentia, we partner with health care facilities around the world to deliver a privacy screen system that offers safety and optimal patient care. Keep it *Clean* is our commitment to raising the bar for improved hygiene standards and infection prevention. Thanks to the EasyCare functions, our screens are easy to disinfect, move and combine. Our products consist of different lengths and heights, all part of a complete system that can adapt to your specific needs.

### EasyClean™ for optimal hygiene

The screens have hard and smooth surfaces that withstand all disinfectants used in patient care settings today. The wheels can easily be removed and washed separately in a dishwasher. All products meet strict hygiene requirements and all surfaces are accessible for cleaning – that's EasyClean.

### Folds back easily with one hand – EasyReturn™

The patented hinges have a built-in memory which enables easy handling and prevention of cross infection using only one contact point: the ergonomically designed handle.

### Fixed or mobile – the choice is yours with EasyClick™

All of our screens are equipped with the EasyClick function making mobility one click away. A wall-mounted screen can be mounted on a trolley for mobile use or to any of our system's other components.

### Create your own screen solution

A great way to bring life into any patient care setting is by using colors and designs. Our screens come in a wide range of colors and designs, creating harmony and providing the versatility to blend into any environment. Our online configurator EasyScreenDesign helps you create the exact privacy screen you need for your patient care setting.



EasyClean



EasyClean



EasyReturn



EasyClick



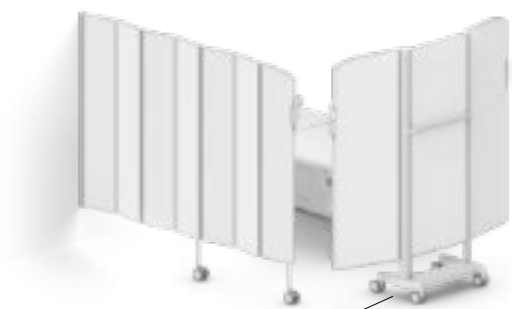
EasyScreenDesign

# A versatile and cost-effective screen system that is easy to use and reuse

It's never been easier to enhance patient safety and ways to combine screen solutions, all part of a complete system that can adapt to your specific needs. Our screens are built to outlast any other privacy solution, supported by our warranty and technical lifetime of at least 10 years. Contact your Silentia distributor for a demonstration.

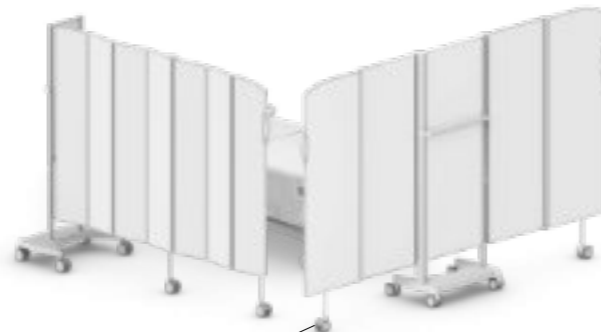
PAGE 6 **Folding screens**

The Silentia folding screen can be mounted on the wall, a floor pole or on wall rails. It can easily be mobile by clicking it onto a trolley. Combine it with a bed end screen.



PAGE 8 **Mobile folding screens**

A mobile folding screen allows you to be more mobile and flexible. The wheelbase takes a minimal amount of space. Combine it with a bed end screen.



PAGE 10 **Mobile bed end screen 1.5 m**

Our bed end screen provides optimal privacy at the end of the bed and quick access to the patient.



PAGE 11 **Mobile bed end screen 2.5 m**

This bed end screen at 2.5 m provides a larger area of protection at the end of the bed and quick access to the patient.



PAGE 9 **Mobile double screen, U- or L-shape**

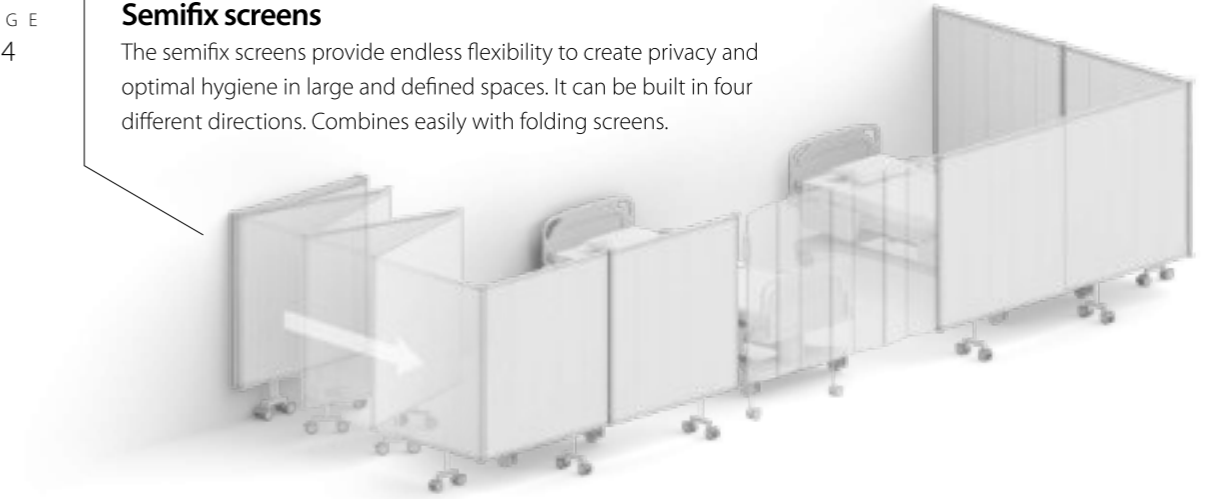
The mobile double screen can be used in a U- or an L-shape to create a movable and flexible space in your healthcare setting.



PAGE 14

**Semifix screens**

The semifix screens provide endless flexibility to create privacy and optimal hygiene in large and defined spaces. It can be built in four different directions. Combines easily with folding screens.



PAGE 16

**Fixed screens**

Use fixed screens when more permanent privacy is required. Easily combines with folding screens.



PAGE 18

**ClearPanels™**

A completely transparent, mobile screen that makes it easy to monitor and communicate with patients.



PAGE 19

**Shower screens**

The Silentia shower screen makes it easy to provide patient privacy while showering alone or assisted.



PAGE 26

**PPE holder™**

This Silentia add-on gives you easy access to hand sanitizers, gloves, wet wipes and other products.





## Mobile single screens

### Mounted on trolley

The screen can be mounted on a trolley to provide mobile privacy when necessary. This trolley is intended for folding screens in various lengths: from 5 to 15 sections. Height: 1.45 m, 1.65 m or 1.85 m. The wheelbase takes up a minimal amount of floor space, while providing maximum stability.



## Folding screens

Simplicity is one of our guiding principles in product development. It has to be easy to screen off patients when they need privacy or simply want time to themselves. It also has to be easy to change things around and expand the system – so all components are designed to be compatible with each other.

### Wall installation

This standard form of installation enables a screen to be attached directly to the wall.

The 25 cm panel width saves you valuable wall space without sacrificing patient privacy.

25 cm



1.45 m,  
1.65 m  
or  
1.85 m

### Single trolley

Accessory used to make folding screens mobile.

The wheelbase is designed to take up a minimal amount of space.



### Pole for floor installation

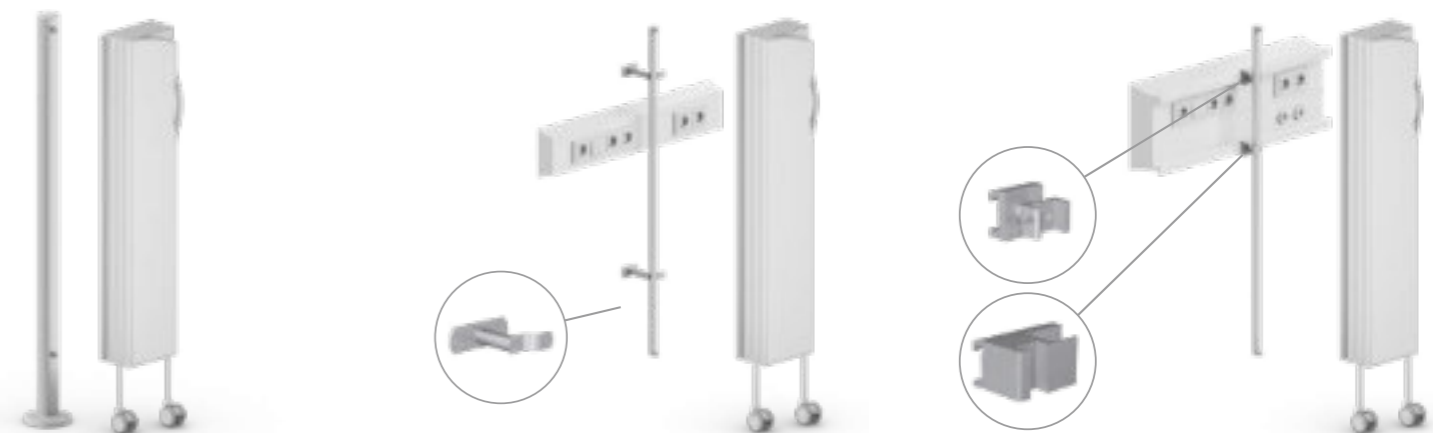
Designed to be anchored to the floor. This is applied when a free-standing screen is required.

### Wall installation with spacer

Used where a screen has to be installed a short distance from the wall, to provide clearance for a care panel, for example.

### Installed on wall rail

Clamps are used when a screen has to be installed directly to the wall rail.



privacy screen



## Mobile double screens

### Mounted on trolley

Our mobile double is a free-standing screen with two folding screens mounted back to back on a trolley. A smart and versatile solution for maximum flexibility and patient privacy. Takes up minimal space when not in use.

The mobile double screen can be used separately at the end of the bed, in an L- or U-shape, to create a movable and flexible space in the room.



## Semifix screens

The semifix screen provides endless flexibility to create privacy and optimal hygiene in defined spaces. It is wall-mounted with a stable wheelbase that can rotate 90°. The three-way connector allows the semifix screen to build in four different directions.

With no need for floor attachment, semifix screens create great flexibility for wide spaces between standing room walls. The screens can build out to long, stable walls. You can also combine them with our folding screens.

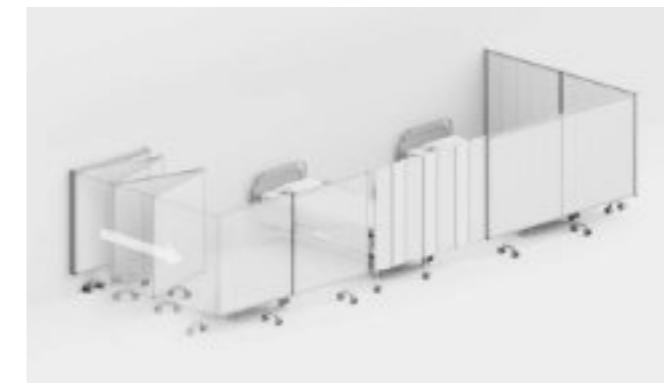
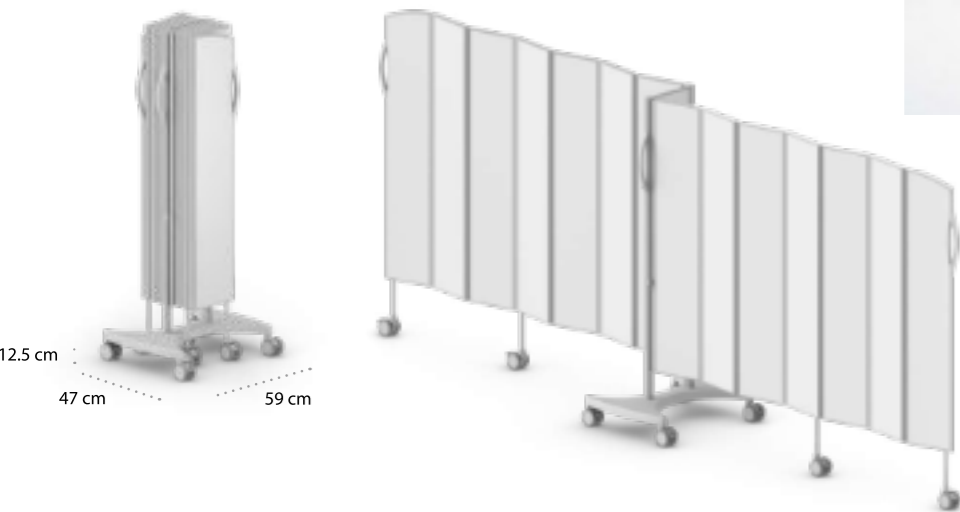
### Easy access for safe care

The wheelbase can be rotated 90° for increased stability or extra floor space. The wheels automatically lock in two different positions,

perpendicular or parallel with the screen. The wheel suspension compensates for uneven floors.

### Flexible solutions

Semifix screens are available in all Silentia design solutions. Let the light in with Daylight screens, add some color or choose a customized design. Choose between three different heights and lengths for your screens. Create your custom medical privacy screen with semifix screens.




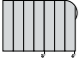




Semifix screens can fold in and out



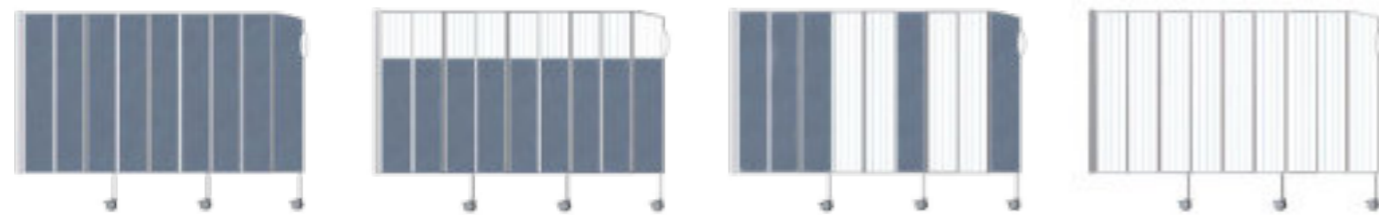
Create and combine with Silentia's folding screen and PhotoPanels™

# Folding screen technical specifications

## Standard sizes

	NO. OF PANELS	ART. NO. COLOR	ART. NO. DAYLIGHT TOP	ART. NO. DAYLIGHT DUO	ART. NO. DAYLIGHT	LENGTH	HEIGHT	WEIGHT	FOLDED SIZE	
									WIDTH	DEPTH
	5	06105	06105-DT	06105-DD	06105-D	1.25 m	1.45 m	8.0 kg	0.25 m	0.10 m
		06205	06205-DT	06205-DD	06205-D	1.25 m	1.65 m	9.5 kg	0.25 m	0.10 m
		06305	06305-DT	06305-DD	06305-D	1.25 m	1.85 m	11.5 kg	0.25 m	0.10 m
	7	06107	06107-DT	06107-DD	06107-D	1.75 m	1.45 m	12.0 kg	0.25 m	0.14 m
		06207	06207-DT	06207-DD	06207-D	1.75 m	1.65 m	14.0 kg	0.25 m	0.14 m
		06307	06307-DT	06307-DD	06307-D	1.75 m	1.85 m	16.0 kg	0.25 m	0.14 m
	9	06109	06109-DT	06109-DD	06109-D	2.25 m	1.45 m	15.5 kg	0.25 m	0.18 m
		06209	06209-DT	06209-DD	06209-D	2.25 m	1.65 m	18.0 kg	0.25 m	0.18 m
		06309	06309-DT	06309-DD	06309-D	2.25 m	1.85 m	20.5 kg	0.25 m	0.18 m
	11	06111	06111-DT	06111-DD	06111-D	2.75 m	1.45 m	18.5 kg	0.25 m	0.22 m
		06211	06211-DT	06211-DD	06211-D	2.75 m	1.65 m	21.5 kg	0.25 m	0.22 m
		06311	06311-DT	06311-DD	06311-D	2.75 m	1.85 m	24.5 kg	0.25 m	0.22 m
	13	06113	06113-DT	06113-DD	Not available	3.25 m	1.45 m	22.0 kg	0.25 m	0.26 m
		06213	06213-DT	06213-DD		3.25 m	1.65 m	25.5 kg	0.25 m	0.26 m
		06313	06313-DT	06313-DD		3.25 m	1.85 m	29.0 kg	0.25 m	0.26 m
	15	06115	06115-DT	06115-DD	Not available	3.75 m	1.45 m	25.5 kg	0.25 m	0.30 m
		06215	06215-DT	06215-DD		3.75 m	1.65 m	29.5 kg	0.25 m	0.30 m
		06315	06315-DT	06315-DD		3.75 m	1.85 m	33.5 kg	0.25 m	0.30 m

The table shows our standard sizes in 0.5 m length increments. Screens are also available in increments of 0.25 m if the total length is between 0.75 m and 3.75 m. The standard heights – 1.45 m, 1.65 m and 1.85 m – can be lowered by –0.1 m by determining the height of the legs of the wheels. The height is decided when you order your Silentia folding screen. **Note:** For maximum stability, the longest screens (12–15 panels) are intended for use in an L-shape for a single trolley and a U-shape for a double trolley around the bed.



### Color screens

Choose your screen color or design on page 21.

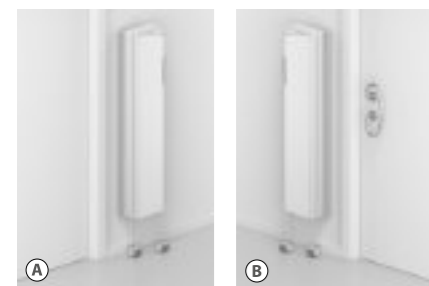
### Daylight Top

Daylight top panel is about 0.3–0.4 m high. Depends on which panel height you choose.

### Daylight Duo

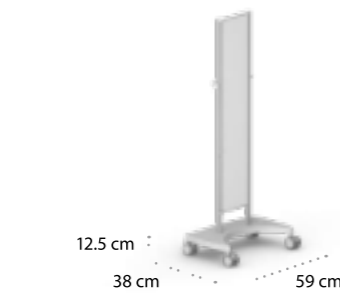
Frosted panels come in pairs.

### Daylight



### Choose the right wall mounting to suit door location

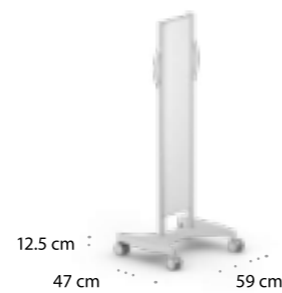
(A) The folding screen mounting is normally on the left side, which means the screen is folded to the right of the wall mounting. (B) To prevent the screen from taking up too much space next to a doorway for example, screens can also be ordered with the mounting on the opposite side.



### Single trolley for one screen

Art. no. 06514, height 1.45 m  
Art. no. 06518, height 1.65 m  
Art. no. 06520, height 1.85 m

Accessory for folding screens up to 15-panels long. EasyClick screen mounting. **Note:** The longest panels (12–15 sections) are intended for use in an L-shape around the bed.



### Double trolley for two screens

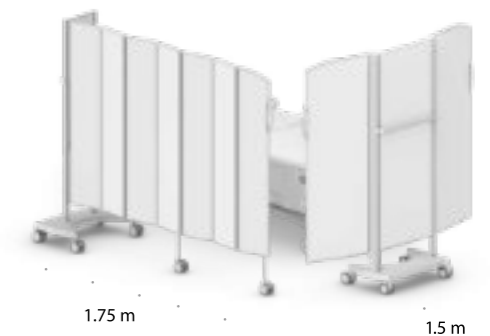
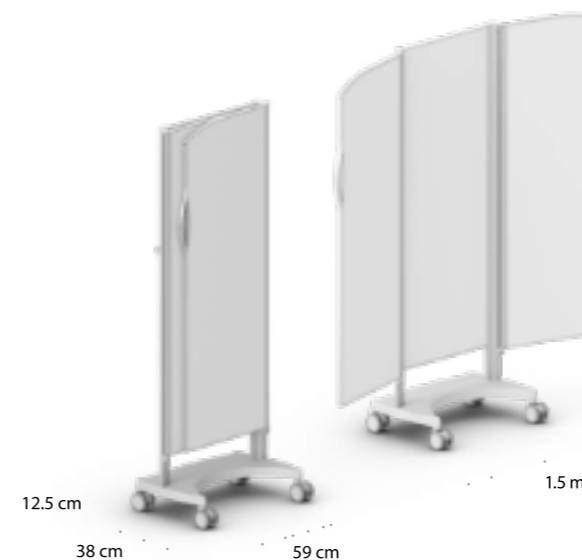
Art. no. 06501, height 1.45 m  
Art. no. 06503, height 1.65 m  
Art. no. 06521, height 1.85 m

Accessory for folding screens up to 15-panels long. EasyClick screen mounting. **Note:** The longest panels (12–15 sections) are intended for use in a U-shape around the bed.

## Mobile bed end screens

### Silentia bed end screen 1.5 m

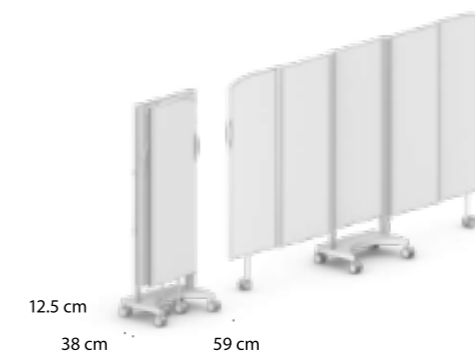
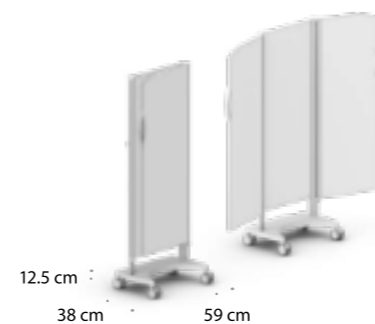
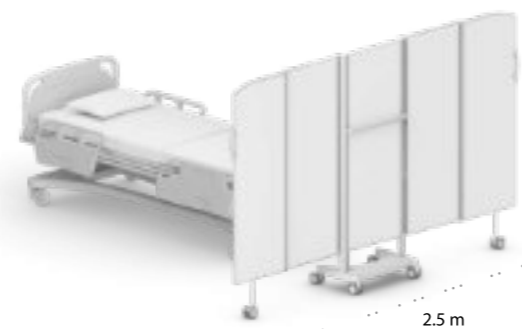
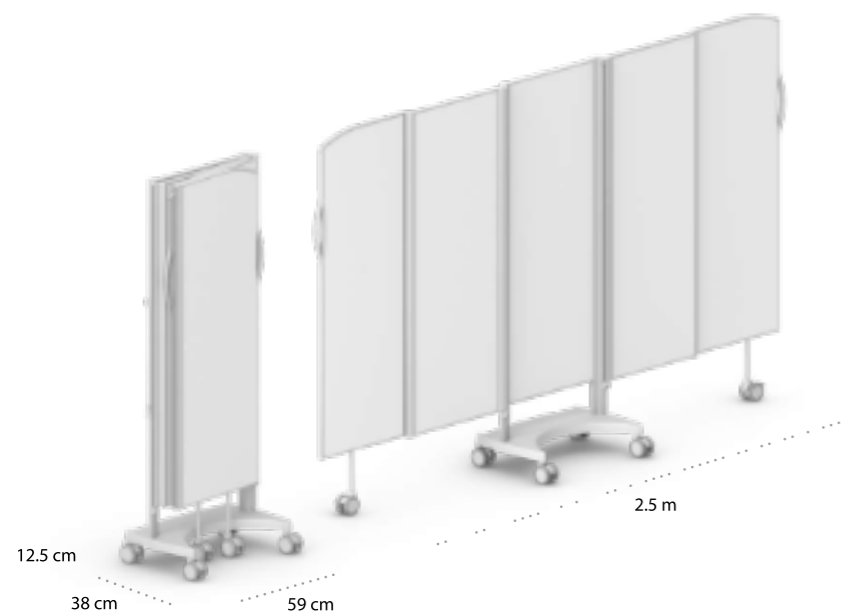
Provides optimal privacy at the end of the bed – or for changing. The wheelbase takes up a minimal amount of floor space, while providing maximum stability. Extended width: 1.5 m. Height: 1.55 m or 1.85 m.





**Silentia bed end screen 2.5 m**

This bed end screen is ideal when a wider solution is required.  
Extended width: 2.5 m. Height: 1.55 m or 1.85 m.



**Silentia bed end screen 1.5 m**

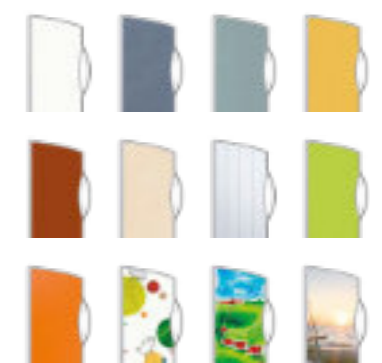
Art. no. 06522, height 1.55 m  
Art. no. 06523, height 1.85 m

Extended width 1.5 m, folded width 0.55 m.  
This screen is intended for situations where a mobile screen is needed, e.g. changing or at the end. The small wheelbase saves valuable floor space and its low height reduces the risk of tripping over it.

**Silentia bed end screen 2.5 m**

Art. no. 06532, height 1.55 m  
Art. no. 06533, height 1.85 m

Extended width 2.5 m, folded width 0.55 m.  
Provides effective privacy at the end of the bed, in hallways or for changing. The wheels can be locked when the screen is extended. The small wheelbase saves valuable floor space and its low height reduces the risk of tripping over it.



**Colors and Design**

Choose your screen color or design on page 21.



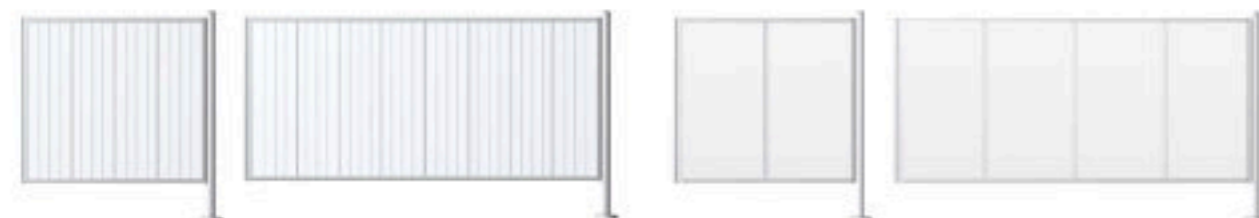


## Fixed screens

Our fixed screens have been developed for applications where more permanent privacy is required. This system also allows a wider range of possibilities. For example, a fixed screen between beds can be combined with a folding screen at the foot of the bed. Fixed screens can be used to create changing cubicles and other types of spaces within a room, without making alterations to walls.

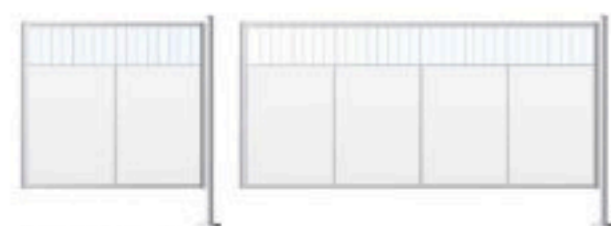
### Standard sizes

LENGTH	HEIGHT	WEIGHT	ART. NO. COLOR	ART. NO. DAYLIGHT TOP	ART. NO. DAYLIGHT
1.3m	1.45m	6.2 kg	06150	06150-DT	06150-D
1.3m	1.65m	7.2 kg	06250	06250-DT	06250-D
1.3m	1.85m	8.3 kg	06350	06350-DT	06350-D
2.4m	1.45m	11.4 kg	06155	06155-DT	06155-D
2.4m	1.65m	13.3 kg	06255	06255-DT	06255-D
2.4m	1.85m	15.3 kg	06355	06355-DT	06355-D



Daylight, fixed

Color screen, fixed



Daylight Top, fixed

### Floor installation

A standard floor pole (A) is used to install a single fixed screen with EasyClick. If you want the pole to serve as a mounting point for additional fixed or folding screens, there are special versions (B–D) with up to four mounting points.

The pole is normally secured to the floor for maximum stability – this is especially important if the pole supports more than one screen. If the pole is only intended to support a single wall-mounted screen, it can simply rest on the floor.

### Standard sizes floor poles

HEIGHT	WEIGHT	ART. NO.	ART. NO.	ART. NO.	ART. NO.
1.45 m	3.3 kg	06561-A	06561-B	06561-C	06561-D
1.65 m	3.5 kg	06562-A	06562-B	06562-C	06562-D
1.85 m	3.8 kg	06563-A	06563-B	06563-C	06563-D



### Extension screen

Moves the mounting point for the folding screen away from the wall, either to make space for the bedside table or to extend a folding screen. Available in four lengths and three heights.

Floor pole attachment possibilities – seen from above.



The pole and cover of the pole at the base are attractively designed with a smooth surface that is easy to clean.

HEIGHT	ART. NO. LENGTH 0.5 M	ART. NO. LENGTH 0.75 M	ART. NO. LENGTH 1.0 M	ART. NO. LENGTH 1.2 M
1.45 m	06162	06163	06164	06165
1.65 m	06262	06263	06264	06265
1.85 m	06362	06363	06364	06365



The semifix screen provides endless flexibility to create privacy and optimal hygiene in defined spaces.



The wheelbase can be rotated 90° for increased stability or extra floor space. Installation is quick thanks to the EasyClick function.

## Shower screens

The Silentia shower screen makes it easy to provide patient privacy. The lowest height allows the caregiver to shower a patient sitting on a stool while keeping the caregiver dry. The wheels have a spring suspension providing smooth handling even on uneven floors. It easily folds back to the wall when not in use.

The wall-mounted screen is available in three different lengths and heights. EasyClick makes it simple to remove the screen for cleaning of the shower area. Even the wheels are easily detached thanks to EasyClick.



Double Left

Single

Double Right



HEIGHT	ART. NO. LENGTH ≈ 0.75M	ART. NO. LENGTH ≈ 1.0M	ART. NO. LENGTH ≈ 1.2M
1.45 m	06143	06144	06145
1.65 m	06243	06244	06245
1.85 m	06343	06344	06345



Endless possibilities



## Explore the possibilities with EasyScreenDesign!

EasyScreenDesign is Silentia's online configurator that helps you create the exact privacy screen you need for your patient care setting. Pick the type of screen, installation, size and design, then submit them directly to us for a free, no obligation quotation. It's that easy!

### Explore the online options

On our website we have an inspiration page to help you in creating a new screen solution. Click on these options to explore the folding screen examples for different care settings. They link directly to the EasyScreenDesign configurator.

### 1. Design your screen

#### Products

Choose the screen that best fits your healthcare situation.

#### Design

Get creative and test the different colors, patterns and photos.

#### Installation

You can install your privacy screen on the wall, control panel or on the floor. All with safe and secure mountings. Or make it mobile on a trolley.

#### Pick your size

We have a wide range of lengths and heights you can choose from.

#### Specification

See all product info for your screen design in real time.

#### Room setup

Change to different types of furniture and see the screens folded in or out.

#### Measures and units

See the measurements for your screen. Change to meter or inches.

#### Fold/unfold

See your privacy screen folded or unfolded.

#### Info

Here you can read important facts for each of your screen designs.

#### Share

Share your screen design with a colleague.



### 2. Send us your screen designs for a no obligation quotation

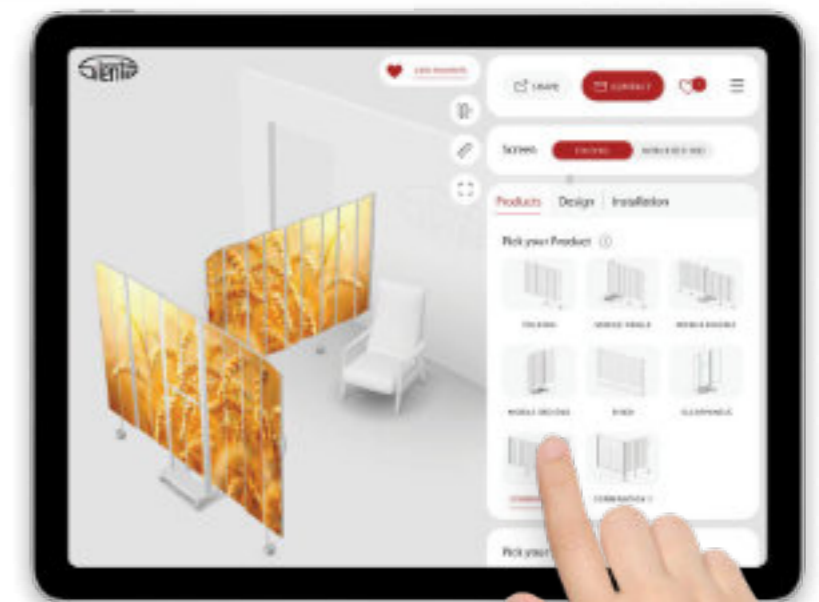
#### Favorites

Click on the heart to save each of your screen designs. See all of your designs on Favorites. Here you can see all of your screen designs and edit the number you are interested in.

#### Contact

Send us your screen solutions after filling in the form and we will take contact with you. Don't hesitate to ask us for a free, no obligation quotation.

Start designing at [easyscreendesign.com](https://easyscreendesign.com)



Combine Daylight with StoryPanels™

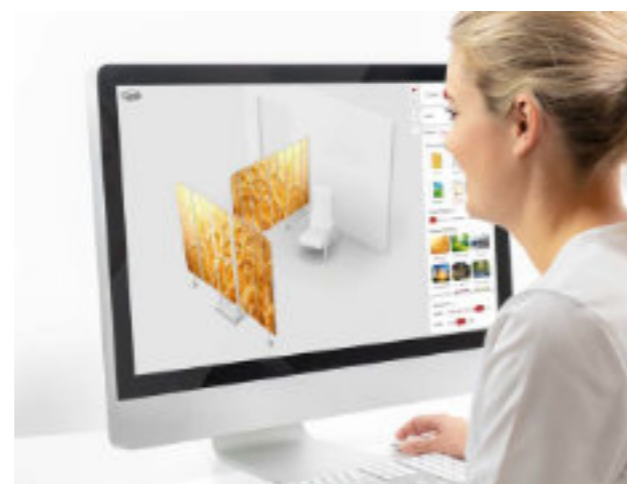


Choose among the many images found in PhotoPanels™



## Colors and designs

A great way to bring life into any patient care setting is by using colors and designs. The Silentia Screen System provides a wide variety of ways in which the screens can be used and combined. Our screens come in a wide range of colors and designs, creating harmony and providing the versatility to blend into any environment.



**Create your own solution**  
Use Silentia's online configurator *EasyScreenDesign* to create the exact privacy screen you need with colors, *StoryPanels*, *ArtPanels* or *PhotoPanels*.





Two PPE holders on a bed end screen



PPE holder on a mobile folding screen



Two PPE holders on a semifix screen

## PPE holder™

Keep your PPE products (Personal Protective Equipment) close at hand with our PPE holder. It gives you easy access to your hand sanitizers, gloves, wet wipes and other products. Mount the PPE holder onto the Silentia screen with our simple click-on system. Attach dispensers with easy-to-move accessory clamps.

### Flexible attachment with accessory clamps

The PPE products are attached to the holder with accessory clamps, making it easy to swap or move products. The accessory clamps can easily slide along the holder to your preferred position.

### Easy click-on mounting

The PPE holder easily clicks onto the Silentia screen solutions. Slide the PPE holder along the screen for optimal positioning.



Two PPE holders on a fixed screen

#### PPE HOLDER

- SEMIFIX SCREEN
- FIXED SCREEN

HEIGHT	ART. NO.
1.45 m	06581
1.65 m	06582
1.85 m	06583

Includes one PPE holder + one accessory clamp. Semifix and fixed screens are ordered separately.

#### PPE HOLDER

- BED END SCREEN
- MOBILE FOLDING SCREEN

HEIGHT	ART. NO.
One size	06580

Includes one PPE holder + one accessory clamp. Bed end and mobile folding screens are ordered separately.



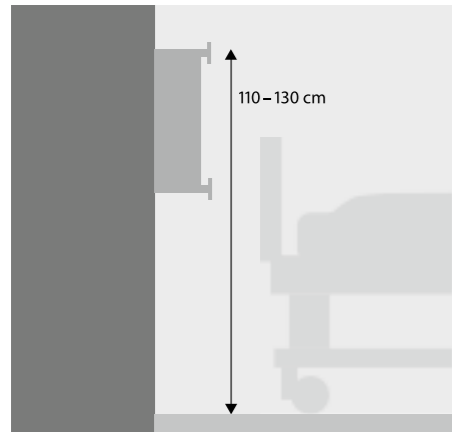
PPE products sit firmly on the accessory clamp



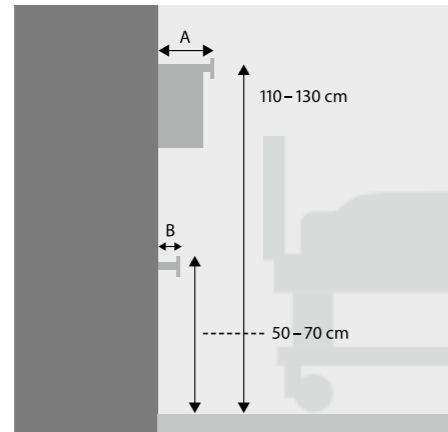
The accessory clamp slides easily up and down the PPE holder

# Important measurements

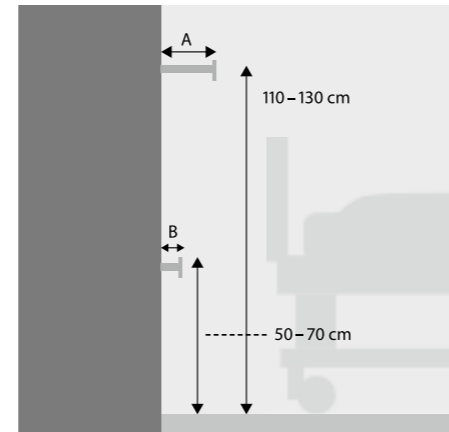
Here are the important dimensions needed to install and handle your Silentia screens. The folding screens can be mounted directly to the wall with spacers or clamps on horizontal wall rails. The different ways of mounting depends on the type of room. The illustrations below show the recommended heights for wall rails, though other measurements work just as well. Contact your local distributor to get the best solution.



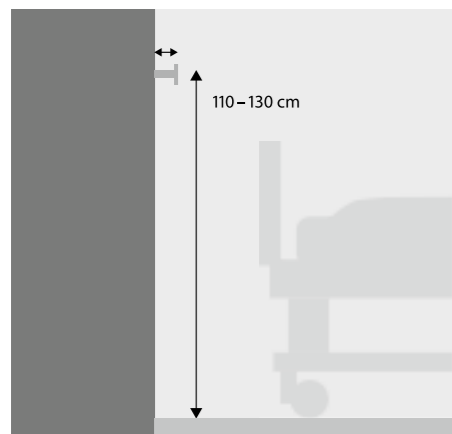
1. Mounting on wall panel



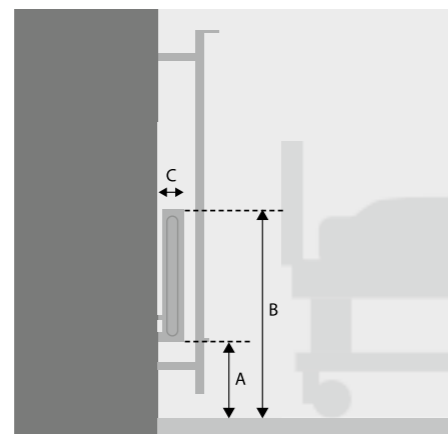
2. Mounting on panel and on a wall rail



3. Mounting on two separate wall rails

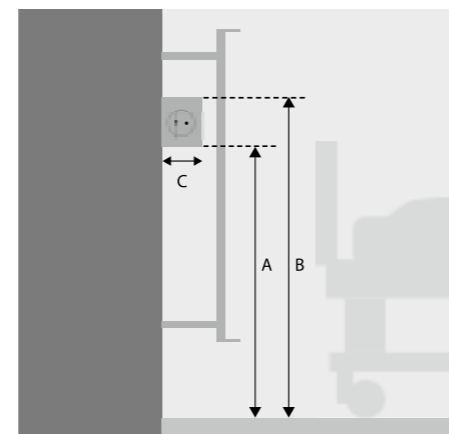


4. Mounting on wall rail



Mounting in front of a radiator with wall spacers

When mounting a folding screen in front of a radiator, it is important that you specify dimensions according to A, B and C in the illustration when ordering.



Mounting in front of a wall rail with wall mount spacer

When you are fitting a folding screen in front of an electrical outlet, it is important that you specify dimensions according to A, B and C in the illustration when ordering.



Support clamps and standard clamps

Support clamp (above). Art. no. 06524.  
Standard clamp (below). Art. no. 06502.  
Select this combination where two wall rails are mounted in a vertical line. See dimensions for figure 1.



Clamp with spacer

Both above and below. Art. no. 06535.  
A useful solution when space is required between a screen and a wall rail, such as in dialysis departments where panel access is vital. See dimensions for figure 1.



Standard clamp and adjustable clamp

Standard clamp (above). Art. no. 06502.  
Adjustable clamp (below). Art. no. 06516.  
This combination is selected when two wall rails sit at different distances from the wall. See dimensions for figures 2 and 3.

# Installation

## Clamps



Standard clamp for wall rail

Art. no. 06502

For attaching to a wall rail. A flexible solution that enables the screen to be moved sideways along the wall rail. Distance between wall rail and screen: 40 mm.



Clamp with spacer

Art. no. 06535

A useful solution when space is required between a screen and a wall rail, such as in dialysis departments where panel access is vital. Distance between wall rail and screen: 150 mm.



Support clamp

Art. no. 06524

Used with standard clamp 6502 where two wall rails are mounted on the wall.



Adjustable clamp

Art. no. 06516

Adjusts to suit variable spacing between upper and lower wall rails. Clamps can be adjusted between 0 and 150 mm. Used together with standard clamp or clamp with spacer.



Back support on wall

Art. no. 06519

Used as backward support when using a clamp mounted on a wall rail. Can be adjusted between 84 mm and 135 mm.

## Spacers



Spacer 20 mm

Art. no. 06506

Used to move a screen away from the wall, to make space for a molding for example. Supplied in pairs.



Spacer 100 or 200 mm

Art. no. 06507, 100 mm  
Art. no. 06508, 200 mm

Used to move a screen away from the wall. Supplied in pairs.



Adjustable spacer

Art. no. 06509, 200-350 mm  
Art. no. 06510, 300-500 mm  
Used to move a screen further away from the wall. Supplied individually.

## PPE holder

A. Accessory clamp  
Art. no. 06590

B. Semifix screen  
Fixed screen

Art. no. 06581 1.45 m  
Art. no. 06582 1.65 m  
Art. no. 06583 1.85 m

C. Bed end screen  
Mobile folding screen

Art. no. 06580  
One size fits all



## Wall mount

Wall mount

Art. no. 06539, height 1.45 m  
Art. no. 06544, height 1.65 m  
Art. no. 06540, height 1.85 m

For convenient mount directly to the wall. One wall mount is normally supplied with the screen. Additional wall mount can be ordered separately.

Wall mount with floor support

Art. no. 06537, height 1.45 m  
Art. no. 06545, height 1.65 m  
Art. no. 06538, height 1.85 m

Wall mount that provides support from the floor when fitted with a clamp.

Wall mount with floor support and top extension

Art. no. 06541, height 1.45 m  
Art. no. 06546, height 1.65 m  
Art. no. 06542, height 1.85 m

Wall mount used with clamp where a wall rail crosses above the screen.

## Floor pole

Floor pole

Art. no. 06561A, height 1.45 m  
Art. no. 06562A, height 1.65 m  
Art. no. 06563A, height 1.85 m

The floor pole can be used to support a wall-mounted screen or as a mounting point for folding screens. The pole is screwed securely to the floor. Other versions can be seen on page 17.



MS-02  
Portrait

MS-01  
Portrait

Designed & manufactured in Singapore

# MODULAR SHELVING SYSTEM

I S O S T O R A G E

- Rigid aluminium structure
- Customised dimensions
- ISO-standard bin/drawer
- Ergonomic

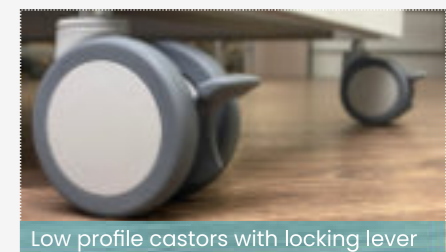
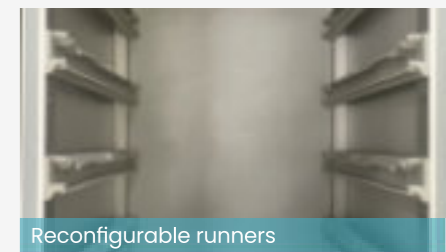


## MS-01 MODULAR SHELVING

### FEATURES

- Corrosion resistant
- Aluminium lightweight structure
- Moisture resistant panel
- Standard ISO 600 x 400
- ISO tray with tilting function
- Reconfigurable low friction runners
- Dividers & tags
- Non marking castors with lock
- Low maintenance
- Future proof and versatile usage
- Dimensions: W476mm x D639mm x H1986mm

Scan to view on Website



# MS-02

Landscape

## MODULAR SHELVING

Scan to view on Website



# MS-02

Portrait

## MODULAR SHELVING

Scan to view on Website



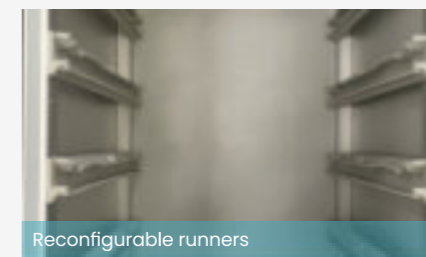
Designed  
& manufactured  
in Singapore

### FEATURES

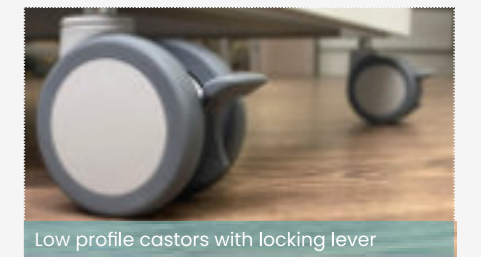
- Corrosion resistant
- Aluminium lightweight structure
- Moisture resistant panel
- Standard ISO 600 x 400
- ISO tray with tilting function
- Reconfigurable low friction runners
- Dividers & tags
- Non marking castors with lock
- Low maintenance
- Future proof and versatile usage
- Dimensions: W1326mm x D441mm x H1986mm
- Dimensions: W921mm x D639mm x H1986mm



Corrosion resistant lightweight structure



Reconfigurable runners



Low profile castors with locking lever





MS-02  
Portrait

MS-01  
Portrait

Designed  
& manufactured  
in Singapore

# MS-05

## MODULAR SHELVING

### FEATURES

- Corrosion resistant
- Aluminium lightweight structure
- Moisture resistant panel
- Standard ISO 600 x 400
- ISO tray with tilting function
- Reconfigurable low friction runners
- Dividers & tags
- Non marking castors with lock
- Low maintenance
- Future proof and versatile usage
- Dimensions: W476mm x D639mm x H1986mm



Corrosion resistant lightweight structure



Reconfigurable runners



Low profile castors with locking lever

[www.systemz.sg](http://www.systemz.sg)

### TECHNICAL SPECIFICATIONS

## MS-01

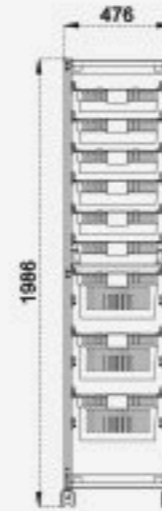
Depth 639 mm  
Width 476 mm  
Height 1986 mm



Top



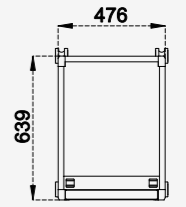
Side



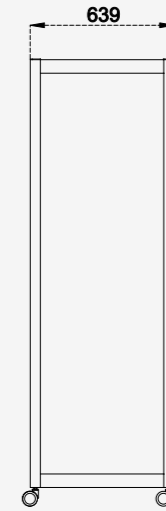
Front

## MS-05

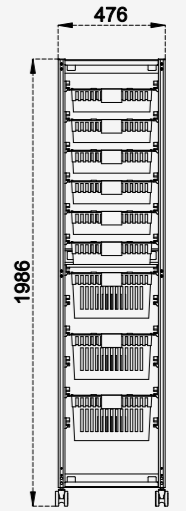
Depth 639 mm  
Width 476 mm  
Height 1986 mm



Top



Side

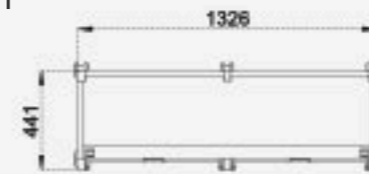


Front

## MS-02

### Landscape

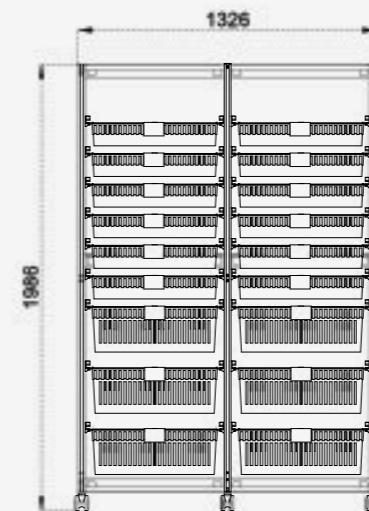
Depth 441 mm  
Width 1326 mm  
Height 1986 mm



Top



Side

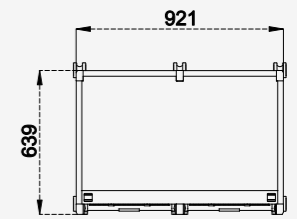


Front

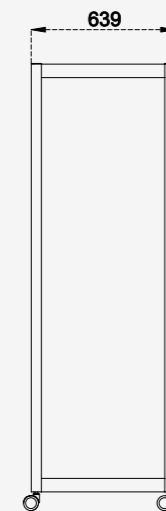
## MS-02

### Portrait

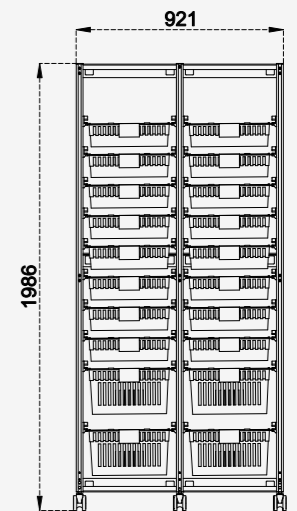
Depth 639 mm  
Width 921 mm  
Height 1986 mm



Top



Side



Front

Scan to view on Website



[info@systemz.sg](mailto:info@systemz.sg)

**SYSTEMZ**

## TECHNICAL SPECIFICATIONS



Hinge function



Easy to exchange



Flexible subdivision



Label holder

## Customisation

- Dimension
- Colour
- Configurations
- Accessories
- 100% non-ferromagnetic material (MRI safe)
- ISO 600 Tray or adjustable shelving

Customisation available for colour, dimensions, and configuration with minimal order quantities. Contact our sales department to discuss your preferences.



## Modular tray system in ISO format

- Height: 50/100/200mm
- Flexible subdivision
- Adjustable divider with clip-on feature



## Optional Features

- Castor upgrade to 100mm Diameter
- Full extension ISO tray telescopic runners
- Wide range of labelling options
- Transparent ISO tray
- Stainless steel ISO Basket
- Adjustable shelving
- Available in ISO: close tray / basket / open tray



# MODULAR TRAY IN ISO 600





## Modular tray in ISO 600 x 400



H+H FlexTray  
Close tray



The closed H+H FlexTray is completely leakproof. Therefore, it is particularly suitable for storing items that contain liquids. If something leaks, the tray is easy to clean: Like all three modular trays, the H+H FlexTray can be put into the dishwasher, ensuring the best possible hygiene.



H+H FlexBasket  
Basket



Especially when filled, the weight of the modular tray alone can play a big role - for example if the full modular tray is to be moved to a different location. Here, every gram counts. The H+H FlexBasket is helping to keep the overall weight minimal, although robust design achieves strong storage with an optimal overview of the items inside.



H+H FlexModu  
Open tray



The design of the H+H FlexModu is patented for a good reason: It combines the advantages of the H+H FlexTray and the H+H FlexBasket. This unique solution thus became our best-selling variant. Leak-proof at the bottom and robust with an optimal overview - the H+H FlexModu is definitely our highlight in terms of utility and flexibility.

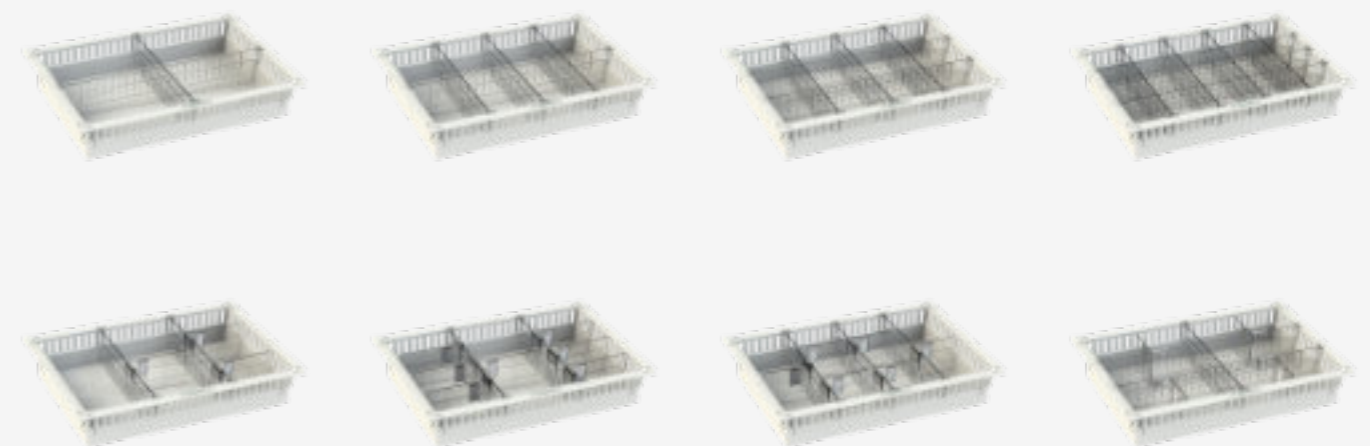
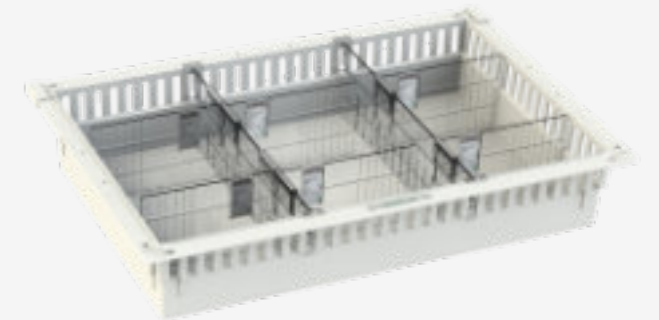
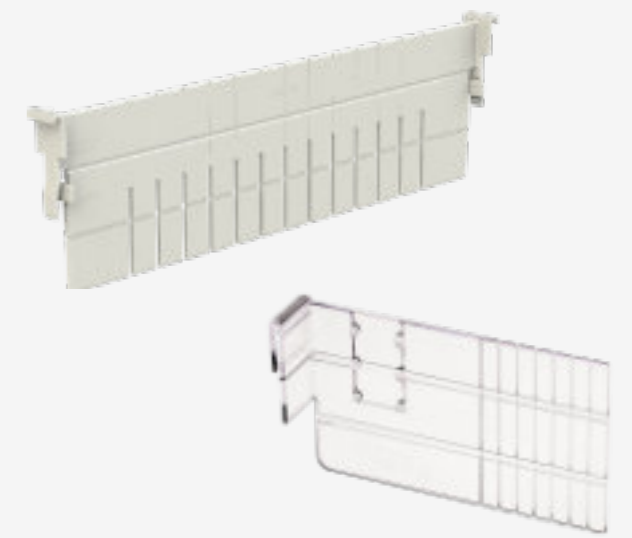
[www.systemz.sg](http://www.systemz.sg)



### Endless flexibility

Whether in the FlexModu, in the FlexTray or in the FlexBasket - the sliding divider creates up to 30% more space. Integrated label holders ensure even more space saving organisation and an optimal overview.

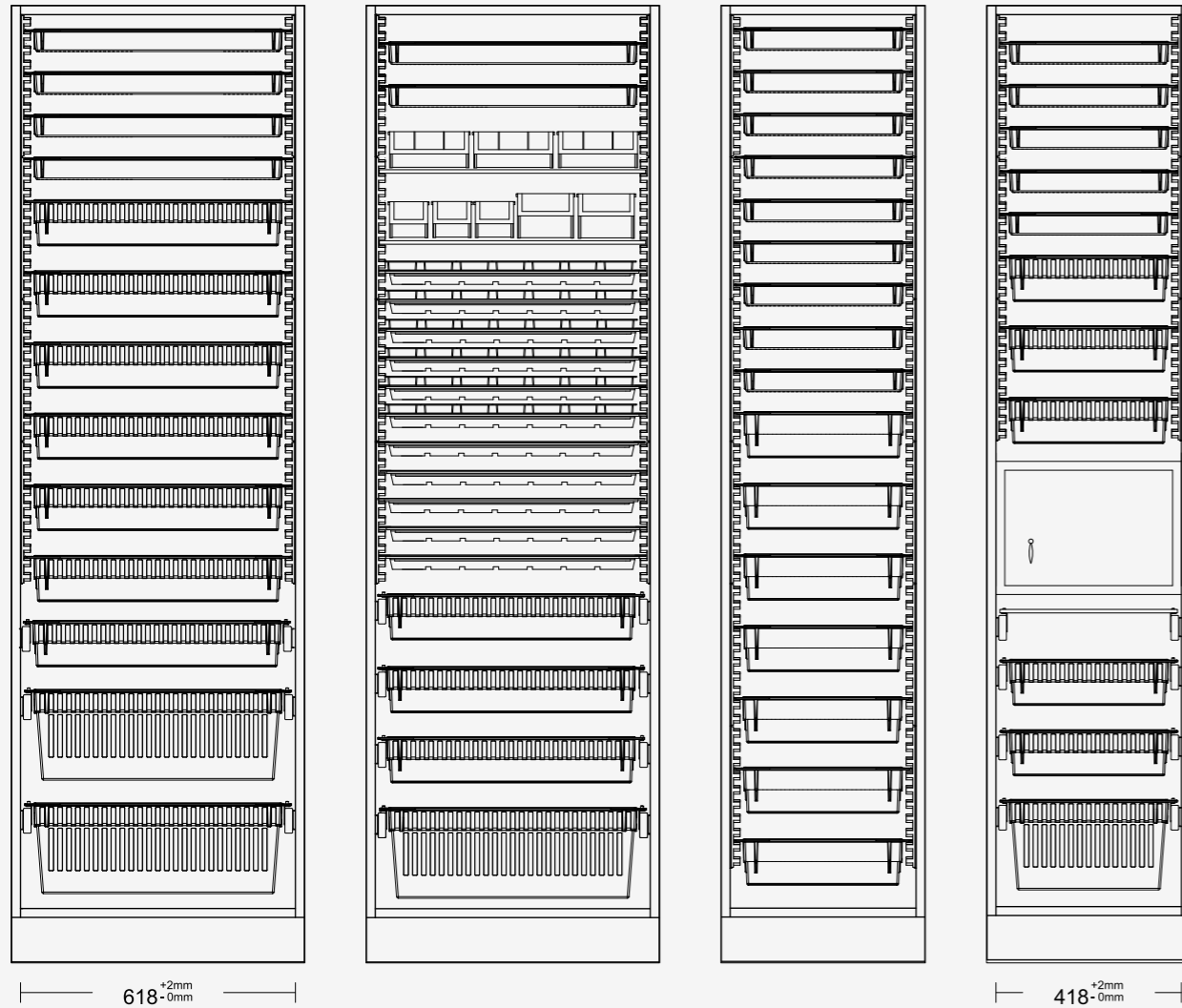
- Flexible divider system
- Incremental adjustable every 10 or 20mm
- High stability as a result of the Clip-On effect
- Labelling options
- On full extension runner or side panel
- Various materials (ABS,PC)



[info@systemz.sg](mailto:info@systemz.sg)

**SYSTEMZ**

## ISO tray integration into carpentry Fit-out



ISO trays can be integrated into your custom cabinet fit-out using the same ISO components and compatible with side panels and full extension runners.

Inquire with Systmz and we will create for you the perfect fit-out solution.

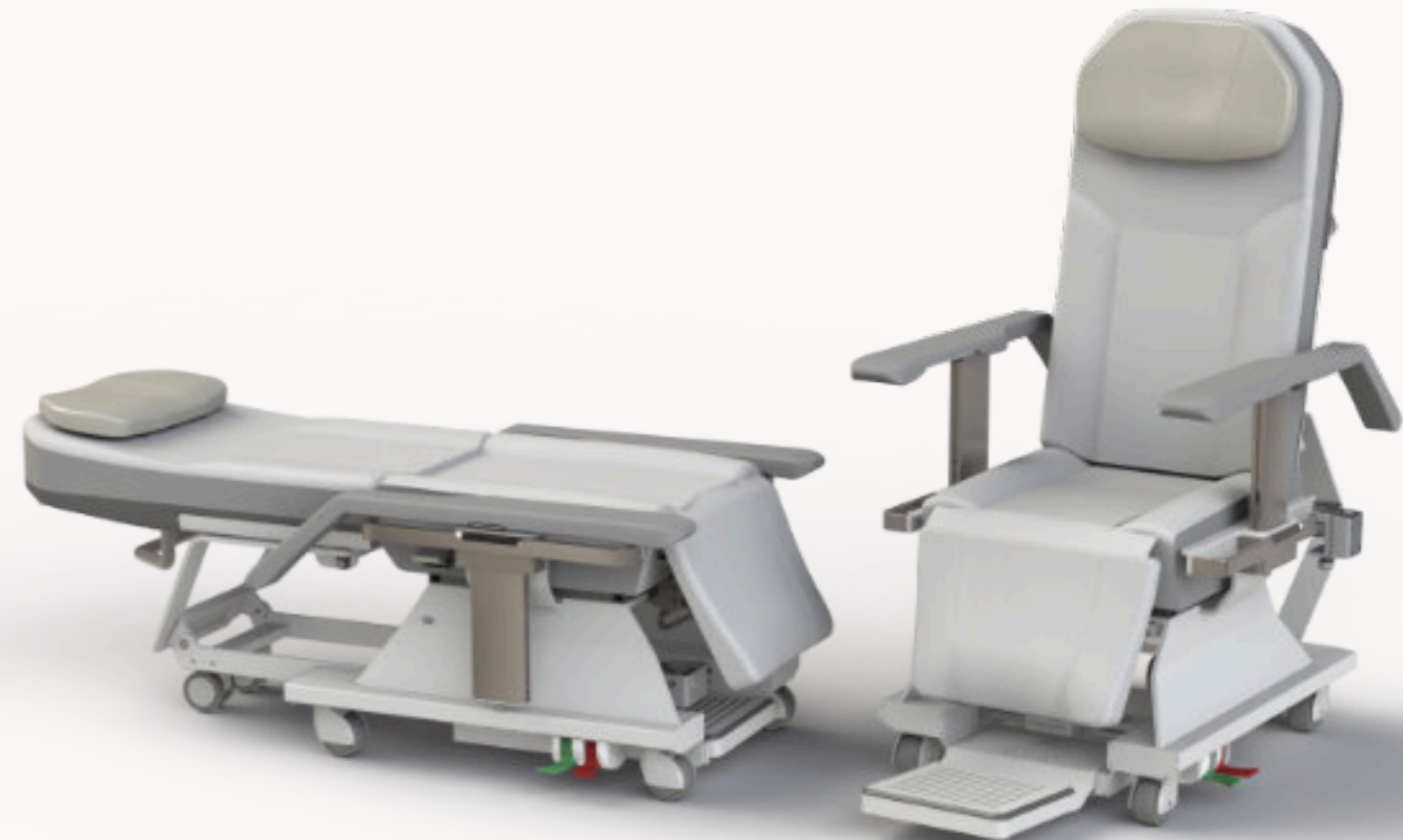


designed & manufactured  
Singapore

**SYSTEMZ**

info@systmz.sg

**SYSTEMZ**



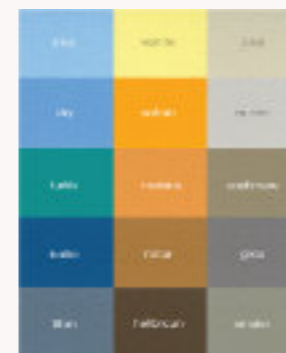
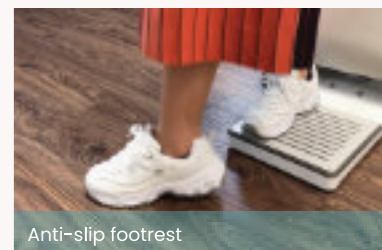
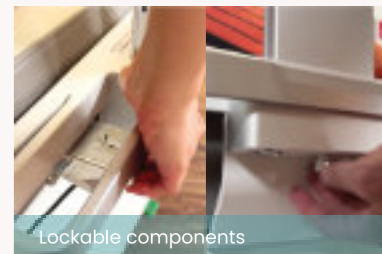
## FC01 FUSA CHAIR

### FEATURES

- Central locking castors, accessible on both sides
- Airline-style headrest, up-down with side support
- Adjustable calf support to relieve tension
- Unique 180° reclining to seat up to 3 NOKs
- Robust aluminium construction tested to exceed 150kg chair / 300kg bench mode
- Medical-grade fabric, resistant against chemicals & sweat. EN ISO 10993-5

### FUNCTIONAL SAFETY (FUSA)

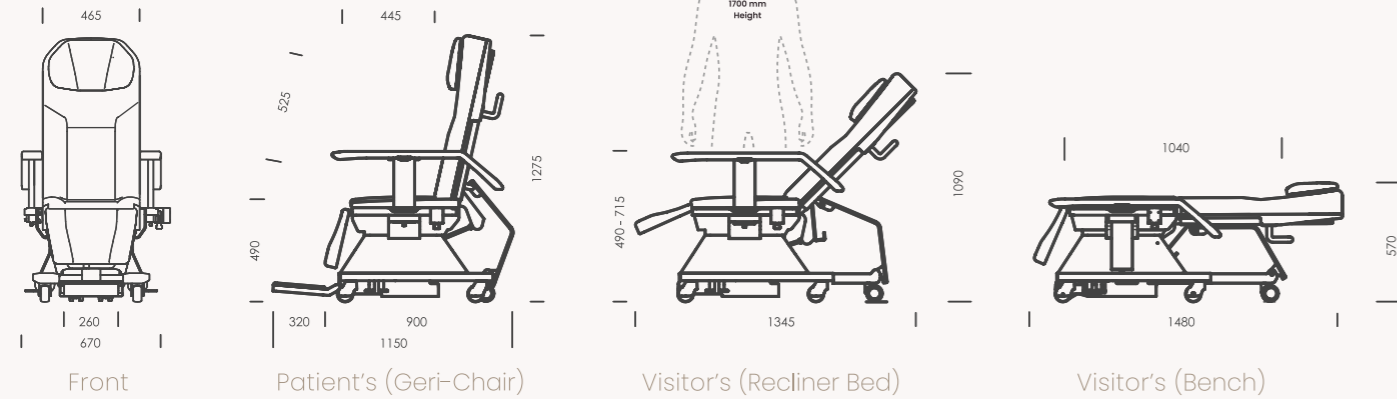
- Hidden safety features to empower caregivers
- Discreet lock to disable armrest adjustment
- Discreet lock to disable backrest adjustment
- Concealed lever to unlock modular food tray
- Spring-loaded foot rest to prevent tripping
- Anti-slam armrest to prevent pinching
- Fully lowered armrest to facilitate patient transfer



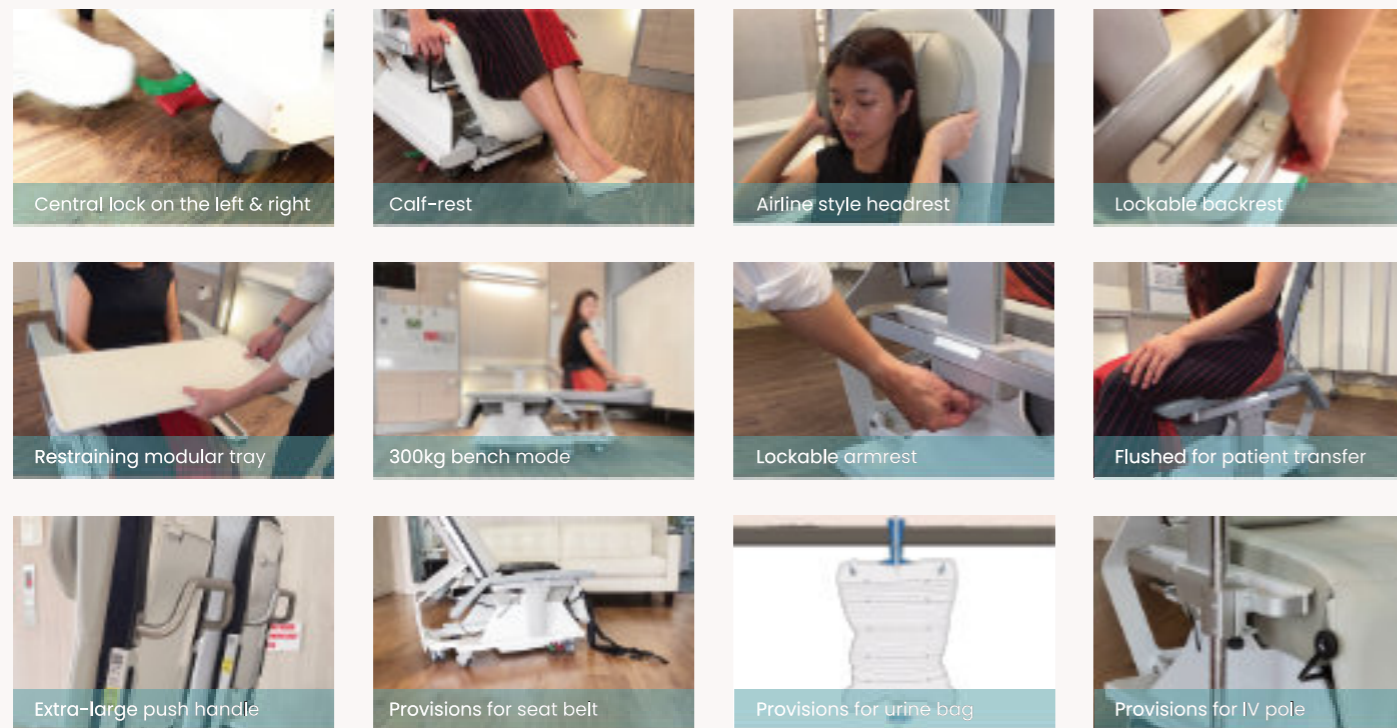
www.systmz.sg

TECHNICAL SPECIFICATIONS

**FC01** Depth 1150 - 1480 mm  
 Width 670 mm  
 Height 570 - 1275 mm



TECHNICAL SPECIFICATIONS



Tested by TUV



Quick Start Guide Videos

MAXIMUM LOAD  
**150 KG**  
 CHAIR MODE

MAXIMUM LOAD  
**300 KG**  
 BENCH MODE



Design Registration Number: 30202400537P

info@systemz.sg



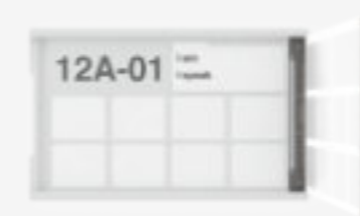
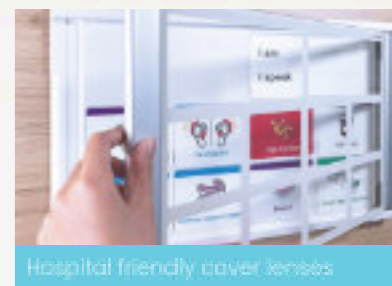
designed and manufactured in Singapore

AC-34

Patient Info Memo Board

FEATURES

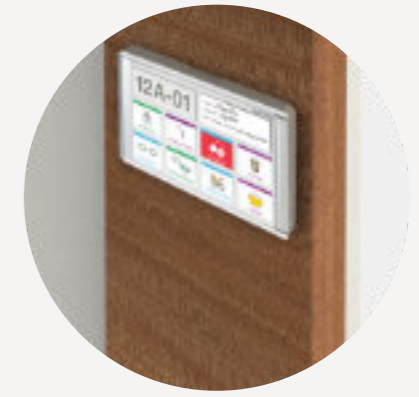
- Easy installation onto existing wall
- Standalone addition to any existing bedhead
- Effective and improve communication
- Intuitive to use and quick to implement
- Over 100 "alerts" represented in eye catching graphical tags
- No maintenance required
- Customisation available subject to minimal order quantity
- Seamless design and easy to clean
- Resistant to hospital cleaning agents



## Product Details

PIB AC-34 is an ideal addition to improve communication at patient bedside in hospital's general ward, acute, community, geriatric and other areas where patient safety is of highest priority. It is a simple yet effective tool to represent patient's alert at a glance. Patient's condition can be updated by simply replacing and displaying the relevant interchangeable graphical tags. This improves patient's next of kin engagement, reduced clinical errors and increase patient safety.

## PIB AC-34 in environment



### Graphic tags:

Full coloured generous graphics for clear communication of patient condition in meticulous designed geriatric friendly graphics.

Robust graphical tags able to survive drop test and harsh cleaning agents.

All tags are held magnetically changing of tag is quick and intuitive providing the caregiver with a practical and hassle-free way to update and reflect patient's alert. Over 100 graphical tags "alert" is available for various clinical departments.

### Magnetic door feature:

Magnetically open and close for seamless design.

### Replaceable Lens:

Inexpensive and easy to replace without minimum downtime.

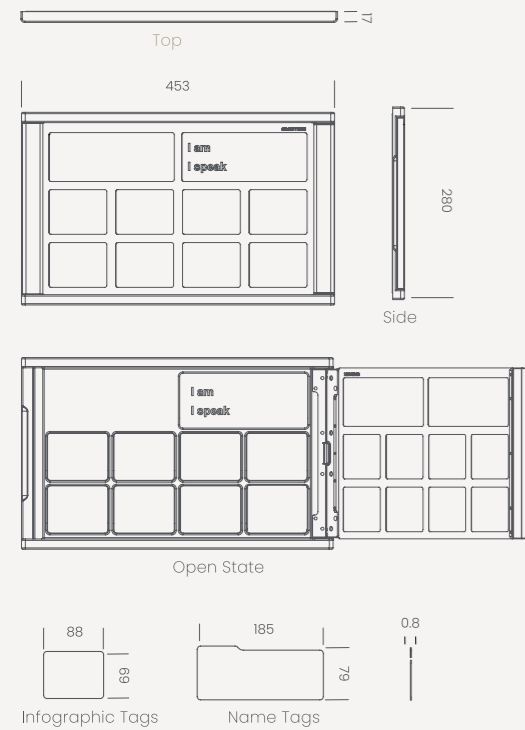
### Hospital friendly cover lenses:

Smooth, clear lenses provide a flat surface to cover and protect the graphical tags. The external housing feature a seamless design that is easy to wipe down. All material including the tags are able to withstand cleaning using alcohol.

## TECHNICAL SPECIFICATIONS

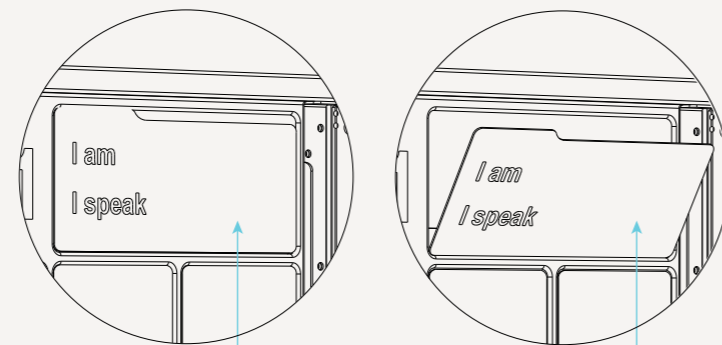
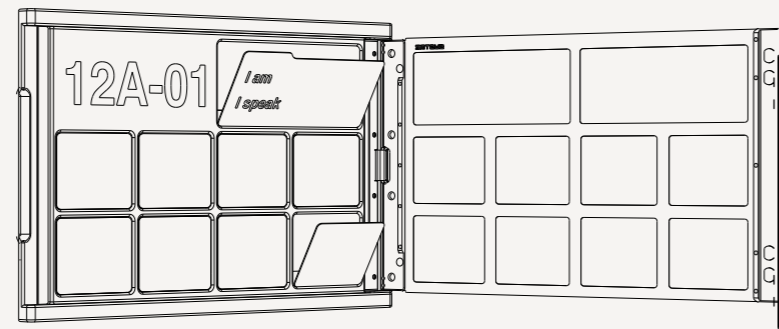
# AC-34

Width 453 mm  
Depth 17 mm  
Height 280 mm



Design Registration No.: 30202109439R

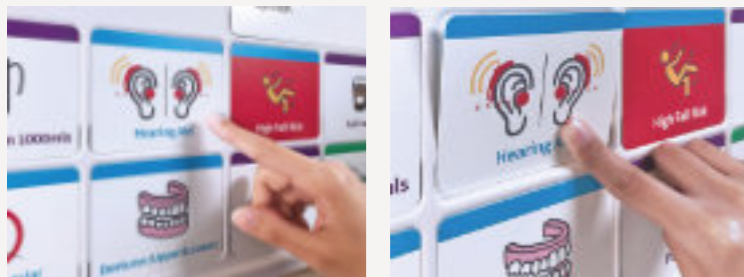
### Tag Procedure



1. Push the lower section of the tag to release

2. Remove the tag

### Ease to interchange Tags

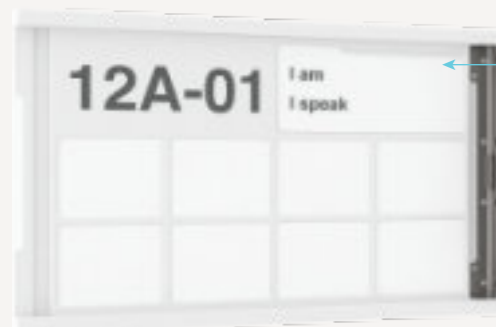
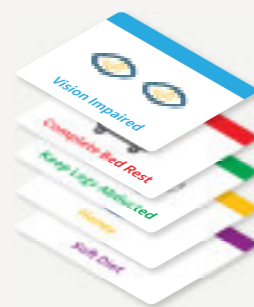


### Customisation of tags

Customise the desired infographic into magnetic tag attachment and display on the PIB Board according to the patient's needs.

#### Types of Graphic Cards

- Diet/Consumption restrictions
- Sensory restrictions
- Mobility restrictions
- Infection control



#### Whiteboard Custom Graphics

Eye-catching customized graphic inserts highlight patient safety, reduce errors and improve communication. Tags can be ordered separately based on changes in work flow. Tags available in vibrant multi-coloured, double sided print.





# ECW-NA

Adjustable-height Workstation



## Feature Highlights

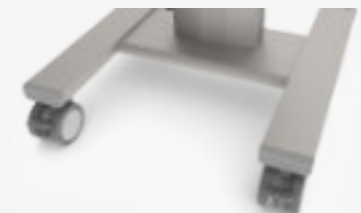
- Full aluminium structure
- Anti rust/corrosion
- Provision for future options
- German-made gas spring
- Smooth height adjustment mechanism
- Anti-tripping footrest
- Weight loading at 30kg safety factor
- Max weight loading at 30kg
- Ergonomic & intuitive worktop design
- Customisable material (Anti-microbial HDPE / Phenolic)
- Customisable design
- German-made non-marking castors with 2 front brakes



Slide-out work surface



Height adjustment Lever



Premium non-marking castors

ECW-NA - Adjustable Height Lite Cart



# ECW-NF

Mobile Workstation Fixed-height

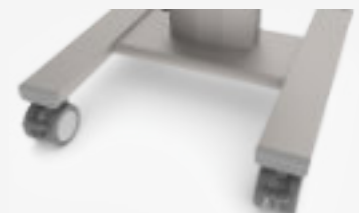


## Feature Highlights

- Full aluminium structure
- Anti-rust/corrosion
- Provision for future options
- Anti-tripping footrest
- Weight loading at 30kg
- Ergonomic & intuitive worktop design
- Customisable material (Anti-microbial medical grade plastic /phenolic)
- Customisable design
- German-made non-marking castors with 2 front brakes
- Compact footprint (L477x D480)



Premium non-marking castors



Premium non-marking castors

ECW-NF - Adjustable Height Lite Cart





[systemz.sg](http://systemz.sg)

**SINGAPORE**

Systemz Pte Ltd  
16 Sungei Kadut Way  
Singapore 728793  
[info@systemz.sg](mailto:info@systemz.sg)  
+65 6465-0387 (Main)  
+65 6465-0656 (Fax)



[systemz.com.my](http://systemz.com.my)

**MALAYSIA**

Systemz Shd Bhd  
No.11, Jalan PJU 3/46,  
Sunway Damansara Technology Park, 47810 Petaling Jaya,  
Selangor Darul Ehsan, Malaysia  
+603 7803 8808 (Main), +6016 2174511 (Mobile)  
[info@systemz.com.my](mailto:info@systemz.com.my)