

The logo for SYSTEM2 features the word "SYSTEM2" in a bold, white, sans-serif font. The "2" is slightly larger and more prominent than the other characters. Below it, the tagline "BESPOKE MODULAR SOLUTIONS" is written in a smaller, all-caps, white, sans-serif font. The background of the entire page is a dark blue gradient with a large, diagonal, lighter blue stripe running from the top right towards the bottom left. In the bottom right corner, there is a pattern of parallel, diagonal lines in various shades of blue, creating a sense of depth and movement.

SYSTEM2
BESPOKE MODULAR SOLUTIONS



Trio Computing Workstations

The **Trio Computing Workstation** combines innovative advancements with flexibility to meet the needs of clinical users today and into the future. Trio offers a refined, ergonomic design coupled with ease of use, maneuverability, and the scalable, reliable GoLiFe power system.

- Slimprofile, improved mobility and enhanced features
- Flexible hybrid power system for extended mobile runtime
- Configurable with an array of drawer and bin options
- New updated N-Sight™ Fleet Management software with enhanced user management tools



◀ **Simple Mobility**
Slim profile, lightweight platform with enhanced steering assist for easy mobility and control



◀ **Storage Flexibility**
Supports a variety of storage options including MaxBin™ storage module



◀ **Intuitive Power**
NEWGoLife scalable power system fits any runtime need



Trio™ Computing Workstations

TRIO

Easy to use healthcare computing workstation

It is simple to use with thoughtful tools built-in to facilitate workflow, save time, and support an efficient clinical process.



Fleet Management

N-Sight™

N-Sight facilitates asset utilization through optimizing fleet deployment and maximizing the uptime and availability of carts (Trio & CareLink only).



N-Sight™ helps you monitor your fleet.

N-Sight™

Optimize Your Fleet

N-Sight helps facilities improve asset utilization, maximize fleet performance and value, and help prevent issues before they impact clinical workflow. The cloud-based N-Sight software features analytics to support optimized fleet utilization and simplified user management tools.

Robust Cloud Solution

N-Sight is a cloud based platform with no client software to install on facility desktop workstations or cart-based computers.

Maximize Uptime and Availability

Maintain cart availability while proactively monitoring cart fleet power levels and performance. Analytics provide visibility into power usage and allow adjustments to technology settings to maximize cart runtime.

Right-Size Fleet

Evaluate cart usage patterns and peak needs to determine if the number of carts deployed meet current clinical demands. Identify opportunities to redeploy carts to locations with greater needs, optimizing asset utilization.

Remote Fleet Management

N-Sight enables remote management of cart user groups, PIN codes, and user permissions. Save time finding lost carts with cart locator*, based on the last wireless access point.

Configuration Settings

Centralized management of cart configurations for displays & alerts, PINs, notifications and service requests.

Integration with Hospital Systems

To facilitate communication between clinicians, IT, and other hospital departments, N-Sight offers integration with hospital systems that can accept email/SMTP input.

*Cart Locator available with Trio



Optimize Your Fleet



Cart Locator*



Proactive Monitoring

Trio™

Features & Models



N-Sight™ Fleet Management
Enhanced N-Sight software to monitor and optimize fleet utilization



Thoughtful Tools
Control center provides simple touch screen navigation to informative tools



Personal Ergonomics
Personally adjustable for optimal user comfort including memory presets



Trio
Document Model

Trio
With Standard Bin

Trio
With MaxBin™

General Specifications:

- **Footprint***: 16.53" x 17.64" (41.9 x 44.8 cm)
- **Starting Weight** (without battery): 95.8 lb (43.45 kg)
- **Battery weights**: 5.6 - 14.4 lbs (2.54 - 6.53 kg)
- **WorkSurface Height Range**: 33.5" - 49.5" (85 - 125.7 cm)
- **Keyboard Height Range**: 24.25" - 43.25" (61.6 - 109.8 cm)
- **Monitor (center) Height Range**: 45" - 66.5" (114.3 - 168.9 cm)
- **Primary WorkSurface Size**: 17" W x 10.5" D (43.1 x 26.6 cm)
- **Expanded WorkSurface**: 10.875" W x 9.175" D (27.6 x 23.3 cm)
- **CPU Cavity**: 17.0" W x 13.25" D x 3.0" H (43.8 x 33.65 x 7.62 cm)

* Expanded base size required for select storage configurations. Inquire with your Capsa representative for more information.

Flexible GoLiFe™ Power System & Battery Options

Power System	Capacity (Wh)	Runtime (hrs) at 30w avg use	Ah (256wh) Swappable Battery Runtime	Total Runtime (hrs) In-Base/ Swappable Combined
20 Amp Hour - Lightweight	256	7.8	7.8	15.6
40 Amp Hour - Medium	512	15.5	7.8	23.3
51.2Amp Hour - High Capacity	655	19.8	7.8	27.6

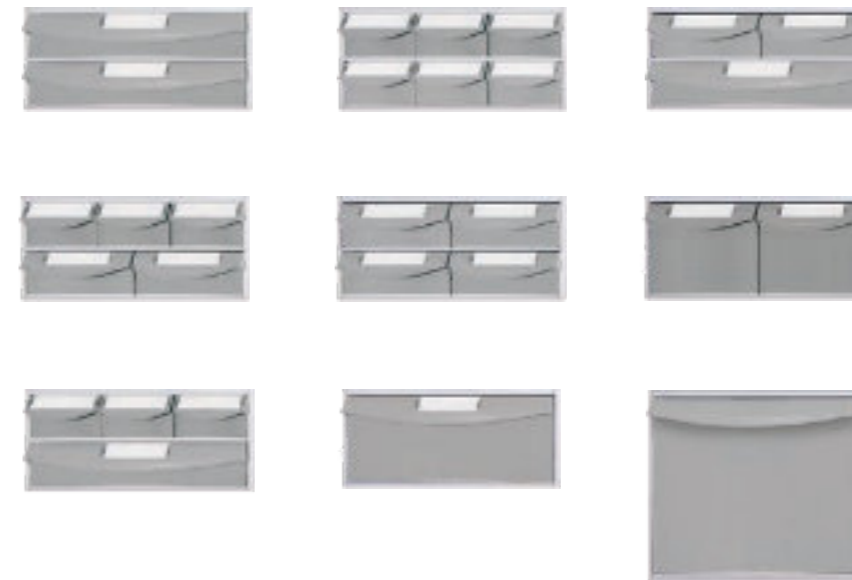
Lithium Iron Phosphate for all battery options

Storage Options

Standard Bins for Trio™, M38e and CareLink™

Configure the Trio, M38e or CareLink with standard drawer and bin options in your choice of electronic locking or non-locking to meet specific workflow, storage and security needs. Available in gray or blue.

Sample Configurations



Standard Bin Dimensions



Standard bins also available in blue



Standard Bins
Shown on Trio

MaxBin System
Shown on Trio

Storage Options

MaxBin™ System for Trio™, M38e and CareLink™

The MaxBin system provides high-capacity storage for medication and supplies, in your choice of electronic locking or non-locking bins. The MaxBin's unique configurable design provides options for one to 3-tier designs with Trio, and up to 6-tiers with CareLink. Contact your Capsa representative to discuss configuration options for M38e.

Sample Configurations



MaxBin Dimensions



4" Small Bin
4" w x 2.66" h x 11.86" d
(10.16 x 6.75 x 30.12 cm)



5.5" Medium Bin
5.5" w x 2.66" h x 11.86" d
(13.97 x 6.75 x 30.12 cm)



8.6" Wide Bin
8.6" w x 2.66" h x 11.86" d
(21.59 x 6.75 x 30.12 cm)



16.6" Extra Wide Drawer
16.6" w x 2.66" h x 11.86" d
(42.16 x 6.75 x 30.12 cm)



16.6" Extra Wide Deep Drawer
16.6" w x 6.15" h x 11.86" d
(42.16 x 15.62 x 30.12 cm)

M38e Drawer Options

Flexibility to configure workstation with storage drawers in 3" or 6" heights. Available in electronic lock or non-locking.



3" Drawer



2-3" Drawers



6" Drawer

Drawer Dimensions

3" - 13.875" w x 3" h x 13.875" d (35.24 x 7.62 x 35.24 cm)
6" - 13.875" w x 6.75" h x 13.875" d (35.24 x 17.145 x 35.24 cm)



M38e

Easy to use healthcare computing workstation

With updated features that provide superior ergonomics, enhanced ease-of-use, and expanded storage flexibility, the M38e maximizes clinical efficiency and elevates the performance of your health IT program.



M38e

Computing Carts

The **M38e** from Capsa Healthcare is one of the most proven point-of-care computing cart in healthcare. With updated features that provide superior ergonomics, enhanced ease-of-use, and expanded storage flexibility, the M38e maximizes clinical efficiency and elevates the performance of your health IT program.

- Smaller profile glides through tight care settings
- Large work area with additional 100 square inch expandable surface feature
- Increase battery runtime for consistent uptime performance
- Large CPU storage area for expanded tech organization



Ergonomic Adjustability
Simple adjustments for individual preference and ergonomic comfort



Secure
Intuitive locking and security system



Storage
Flexibility to configure workstation with storage drawers or bins



M38e

M38e

Features & Models



Adaptable
Configure to meet specific department or workflow needs



Flexible Work Surface
Expands for additional workspace



Powerful Battery
Efficient Li-ion power provides extended runtimes



M38e
Document Model

M38e
XP Model

M38e
RX Model

General Specifications:

- **Base Size:** 17"x17" (43.18 x 43.18 cm)
- **Weight:** Configurations starting at 87.5 lbs
- **Cart Height:** 49.3" to 65" (125.22 to 165.1 cm)
- **WorkSurface:** 17.25" W x 10.25" D (43.81 x 26.03 cm)
- **Casters:** 4" or 5" standard or directional casters
- Adjustable height, tilt/swivel monitor mount and keyboard tray options
- Enhanced lighting features to assist with navigating and working in darkened areas

Optional Accessories:

- Access pack
- Wire basket
- Scanner mount options
- Printer shelves
- Waste bin

Power System

Target Run-Time (typical configuration):
Charge Time from Empty:
Battery Life Cycles:
Recommended Technology:

Non-Powered

Laptop battery only
Laptop charge time only
N/A
Laptop (up to 15" screen)

AC Powered Lithium

9-12 Hours/Charge
2.5 Hours
2500+
Laptop (folded), thin client, or All-In-One PC

Accessories

Storage Selection

Your Storage Selection
Add additional storage options from the right.



Your Storage Selection
Add additional storage options from the right.



4 Drawer Vertical Expansion Set

Customisable Drawer Options



Full Drawers

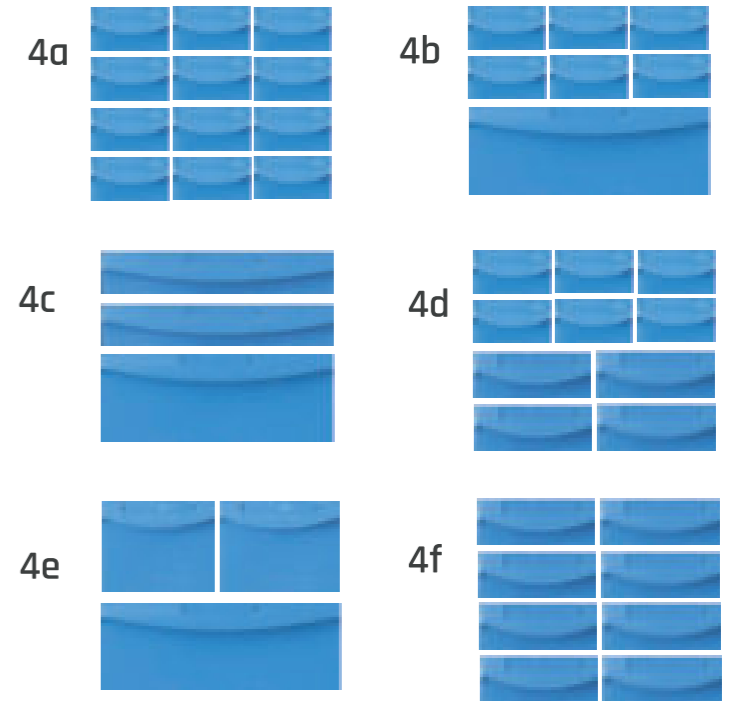
Accessories

Customisable Drawer Options

M38 RX Mobile Medication Trolleys



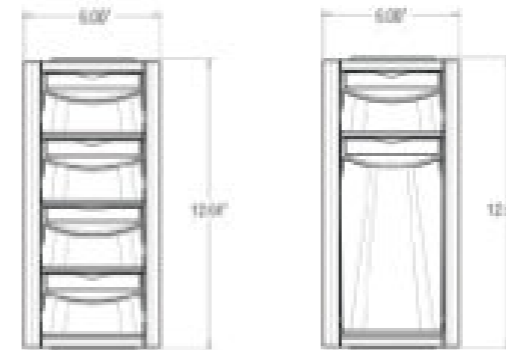
RX 4-Level Configuration



Xp 2-Level Configuration



Side Expansion Pack



1.1- 98 W x 272 D x 50 H



1.2- 156 W x 272 D x 50 H



1.3- 325 W x 272 D x 50 H



2.2- 156 W x 272 D x 120 H



2.3- 325 W x 272 D x 120 H



1.3- 98 W x 272 D x 200 H (vertical expansion kit only)



Accessories

Customisable Drawer Options

Your Storage Selection

Add additional storage options from the right.

4 Drawer Vertical Expansion Pack



4 Drawer Vertical Expansion Pack

2 Drawer Vertical Expansion Pack

Locking Side Bin

Product Description

The Vertical Expansion Pack can be added to the side of an M38 RX in order to provide additional storage for necessary items at the point of care.

Features and Benefits

Storage of items on cart allows for a more efficient workflow. Drawers maintain a locking mechanism in order to ensure the security of items. Option of two or four drawers cater to user's storage preferences.

Specifications

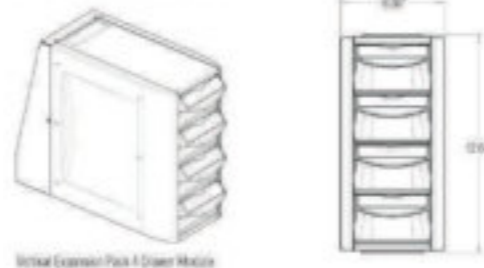
Accented on all M38 RX Carts
Dimensions: 12.64" h x 6.00" w x 15.65" d

Note: The 4 Drawer Expansion Pack Module has 4 small drawers, whereas the 2 Drawer Expansion Pack has 1 small drawer and 1 three-deep tall drawer.

Vertical Expansion Pack 2 Drawer Module



Vertical Expansion Pack 4 Drawer Module



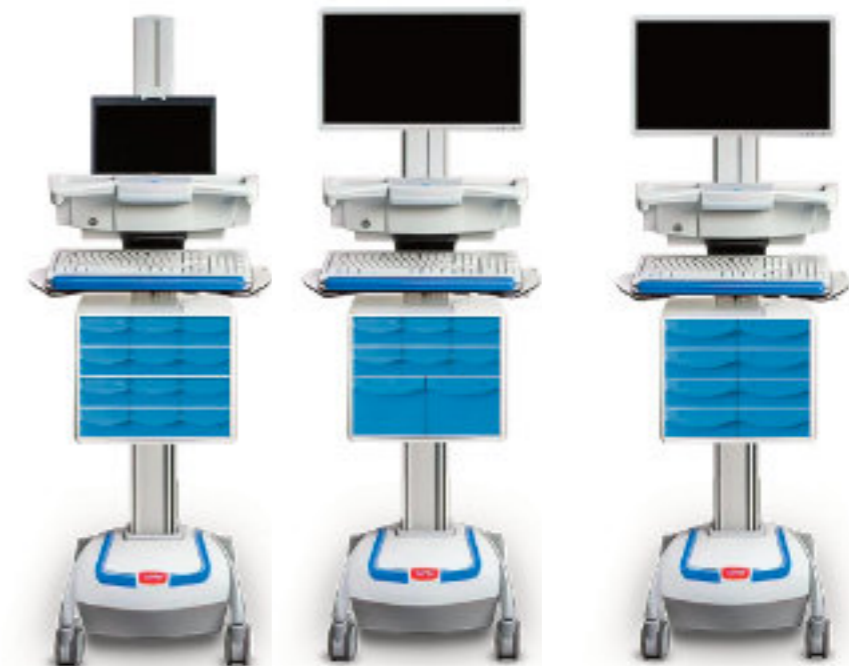
Accessories

Medication Drawers

XP Locking 2 Levels



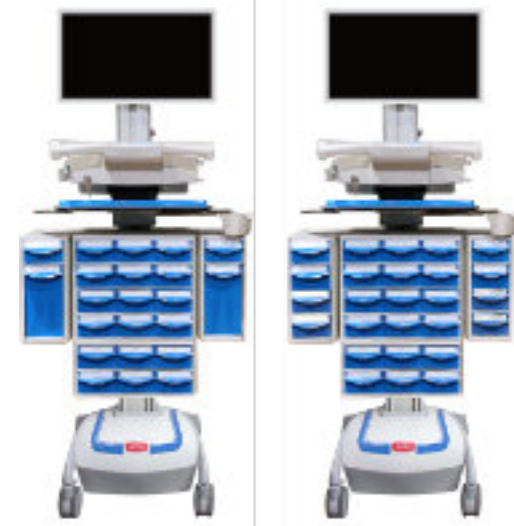
XP Locking 2 Levels



Accessories

Medication Drawers w/ Side Expansion Pack

RX + XP
Modules
6 Levels



RX + XP
Modules
8 Levels



Accessories

Trio™, CareLink™ & M38e Accessory Options

Capsa Healthcare's Trio, CareLink, and M38e computer workstations are designed to accept a wide variety of accessories to customize your workflow and organization.



Access Pack for med cups, tape and alcohol wipes and/or scanner holder



Tilt Swivel Monitor Mount



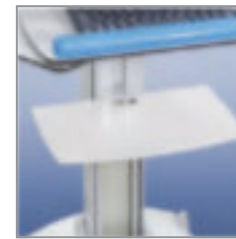
Wire Basket (standard or extra large)



Forked Scanner Holder



M38e Task Light



Printer Shelves



Barcode Scanner Shelves and Scanner Holder Options



Waste Bin



Zebra Label Printer Holder



Trio Notification Light



Document Scanner Shelf



Tablet Holder



PDI Mount Bracket



Caviwipe Mount Bracket



Mounting Plate for Sharps Bracket and Accessory Bins

Check with your Capsa Health care regional sales manager about these and more accessories specific to your chosen point-of-care solution.

Specialty Carts

CareLink™ Fetal Monitoring Cart

The CareLink™ Fetal Monitoring cart provides both fetal monitoring and a mobile workstation in a single solution. Your choice of medical monitoring system promotes workflow efficiency in labor and delivery departments.



Features

- Dual-swivel monitor mount supports up to 22" monitors
- Stable open shelf supports and secures a variety of Fetal Monitoring systems
- N-Sight™ fleet management for remote asset management
- N-Stride™ steering control for effortless maneuverability and control
- Expansive work surface
- Height adjustable with electronic lift

Phlebotomy Cart

Configure Trioor M38e as a flexible, mobile Phlebotomy workstation that keeps all of your blood draw supplies close at hand, and enables you to easily transport them throughout the facility. Multiple bin sizes and divider options provide ample storage and smart organization of phlebotomy supplies.



Features

- Large work surface with raised edges and expandable surface feature
- Configurable to meet workflow needs
- Simple electronic height adjustment
- Slim profile for tight care settings and ease of mobility
- Ergonomic adjustments, easy maneuverability
- Increased runtime for improved uptime performance

Registration Cart

Configure Trioor M38e for a flexible, mobile workstation that enables you to move easily from one patient room to another.

Both platforms feature a large work surface, with a slide out extension for additional work space.

Multiple drawer and bin options provide ample storage and smart organization of supplies. Choose from an array of accessories to best accommodate your choice of printers, scanners and electronic signature pads.



Features

- Large work surface with rear utility bins and expandable surface feature
- Configurable with scanner mounts and printer shelves to meet patient registration workflow needs
- Choose from manual or electronic height adjustment
- Slim profile for tight care settings and ease of mobility





Highlights

Sabu Accessory Rail

2 clicks are enough! An accessory rail can be removed and adjusted in height at any time, thanks to the unique Sabu system.



• video



Twin Wheels

The Preciso line uses twin wheels: extremely quiet and robust, they withstand large loads without any problem.

Single Wheels

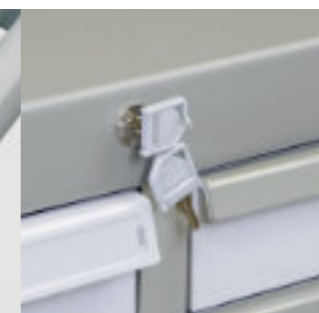
Presto and Persalife have single wheels: super smooth running thanks to the highest quality tread and double ball bearing, super quiet thanks to careful engineering.



Ideas in Motion



Closing Systems



Key lock

Standard on all trolleys. The key bends to prevent breaking it or hunting operators.

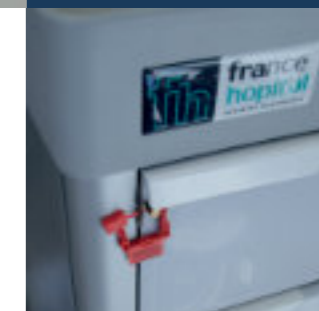


Digicode

With numeric code (and key as bypass in case of problems).

NEXT-lock Electroni Clock

- Lock and unlock drawers with:
 - | 4-digit PIN
 - | NFC on card or suitable smartphone
 - | auto-lock after set time (programmable)
 - | lock and unlock using a key (as safety measure)



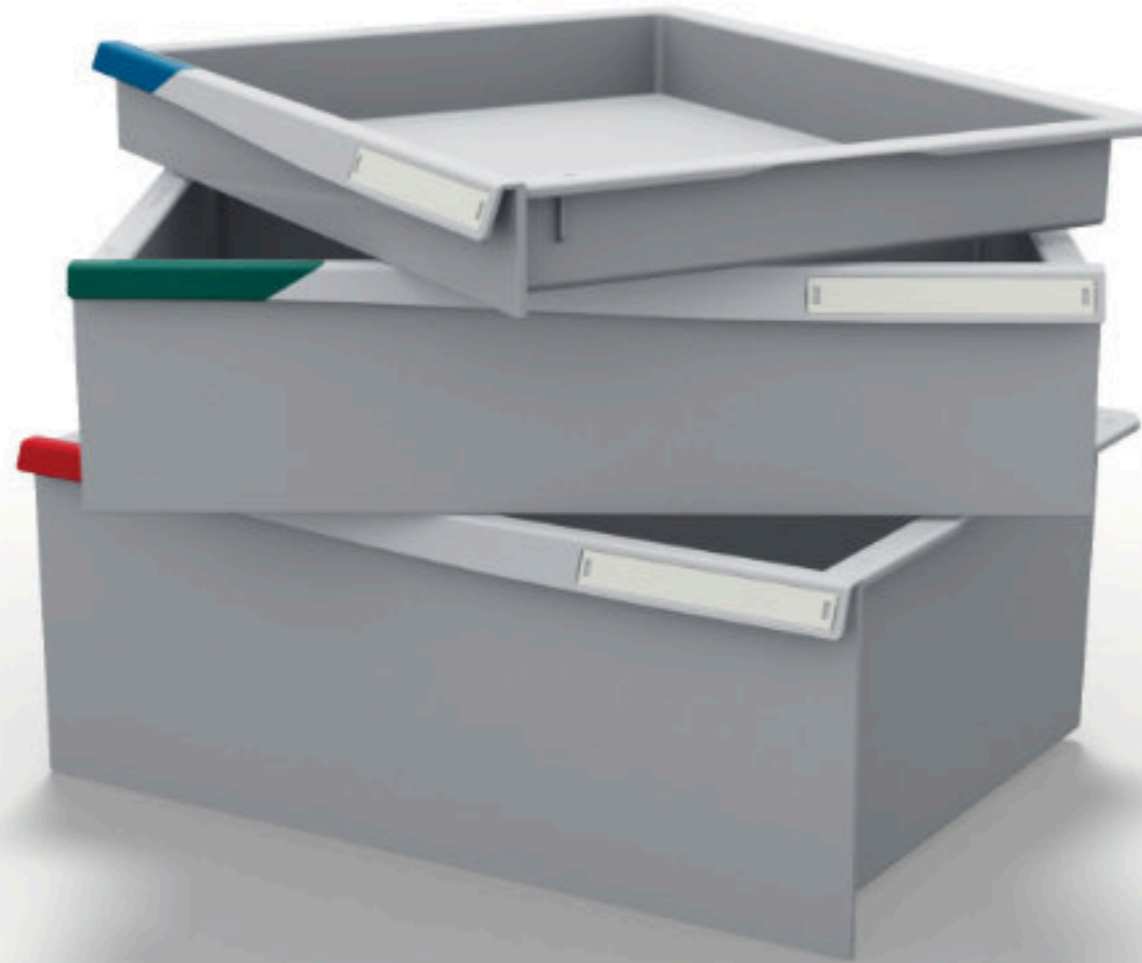
Seals

Individual or centralized locking of drawers.

The FH-Drawer

This is the shared transport element for FH's range of trolleys, transport and storage columns, MOSYS-ISO shelving system and others such as Picking Stations.

The FH-Drawer is made of high-quality, injection-moulded ABS plastic, which means that it is seamless and has a smooth surface. It is easy to clean and can withstand temperatures from -30°C to +85°C.



Modular - Spacious

FH-Drawers come in two sizes: 610 x 470mm and 410 x 470mm, and in different heights: 76mm - 1 module, 156mm - 2 modules, 236mm - 3 modules, 316mm - 4 modules.

The FH-Drawer has 4 sides of the same height, ensuring true capacity and preventing products from falling sideways.

Coloured

Each drawer comes with a coloured identification tag, available in 10 colours, for immediate identification of the contents, and a label holder. Tags are interchangeable and can be swapped at anytime.



Mobile

The FH-Drawer is unique because it can be pulled out, becoming mobile. It rests on a frame that incorporates the telescopic slides: lifting it is easy.

The FH-Drawer:

- | Allows the rapid exchange of drawers between trolleys
- | Allows perfect cleaning and sanitizing thanks to rounded inner edges and corners
- | Ensures a load capacity of 45kg
- | Guarantees 110% opening and closing with automatic retraction

The telescopic slides are quiet and damped.



Transparent

Great for seeing the contents at a glance, even when the trolley is closed. Suitable for use on both telescopic and ISO guides, the transparent FH-Drawer is made of ABS plastic.



Presto

Multifunction trolleys

We meet the new demands of the healthcare world for lightness, compactness and economy. Presto: "less is more"!

- | ABS worktop with three raised edges
- | Anti-drip front rim
- | Integrated push handle on three sides
- | Drawers on telescopic ball-bearing guides
- | Wheels 125 mm



Worktop and pull-out side table
Large worktop with 3 raised edges that can be used as push handles to minimize the footprint. Wet sand grey colour with anti-glare matt finish.
On the left side there is a practical writing table that increases the usable surface of the trolley.

Colours for Presto side panels:



Presto Configurations

Some of the many configurations of Presto.

Presto is extremely flexible and can adapt to the multiple needs of each ward, thanks to the dozens of accessories available.



Small
570x595x1035 H mm



Medium
660x595x1035 H mm



Large
855x595x1035 H mm



Double
1115x595x1035 H mm

Presto small

Bedside trolley

Cod. PST435-GR

Dimensions

570x595x1035 H mm

Materials

Aluminium
ABS plastic

Configuration

• 5 FH-Drawers



Presto medium

Therapy trolley

Cod. PS404-BL-MW7

Dimensions

920x595x1035 H mm

Materials

Aluminium
ABS plastic

Configuration

- 4 FH-Drawers Accessories
- Right side: Maxiwall wastebin on rails
- Left side: 3 tilt out bins and extendable work surface



Presto large

Anaesthesia trolley

Cod. PS605-WH-M354

Dimensions

1115x595x1035 / 1690 H mm

Materials

Aluminium
ABS plastic

Configuration

- 5 FH-Drawers
- Right side: Maxiwall wastebin on rails
- Left side: 3 tilt out bins and extendable work surface
- Overbridge: 3 rails; 5 small bins; 4 large bins and glovebox holder



Anaesthesia trolley
Cod. PS605-M354-S



Multifunction trolley
Cod. PST435-S



Broselow trolley
Cod. PS609-B-S

Presto double

Therapy trolley

Cod. PS8045-AL

Dimensions

1350x595x1035 H mm

Materials

Aluminium
ABS plastic

Configuration

- 4 + 5 FH-Drawers
- Right side: 2 Wally wastebins on rails
- Left side: 3 tilt out bins and extendable work surface



Therapy trolley
Cod. PS404-M254-S



Emergency trolley
Cod. PS405-EM-S



Therapy trolley
Cod. PS615-GR-M



• video

Persolife

Emergency trolleys

Compact but with plenty of space, ergonomic, performing and extremely robust. These are our emergency trolleys.

- | 3 sizes: small, medium and large
- | Available with or without overbridge
- | With or without cardiac massage board in various locations
- | Defibrillator holder
- | Central locking with disposable seal



Mobile emergency station

Much more than a trolley, Persolife is a mobile emergency station that can be used simultaneously by at least 3 operators to ensure a rapid and effective intervention.



Safety-lock: a simple gesture to quickly unlock all drawers.

Persolife Details

Original design, unique colour, lightweight aluminium structure and ABS plastic drawers: the best in an emergency.

Persolife is available in orange and red.



400 Small
570x595x1225 H mm



400 Medium
660x595x1225 H mm



600 Large
855x595x1225 H mm

Security seal

- Disposable, numbered, in red plastic.
- Guarantees the integrity of the cart contents
- Avoids using keys and codes
- Accelerates unlocking during an emergency.



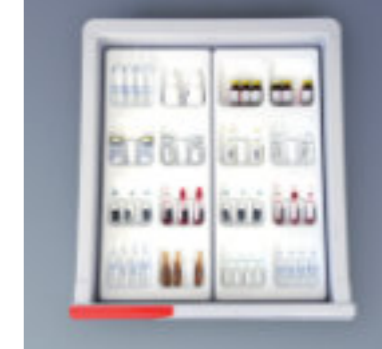
Antistatic wheels

The standard equipment always includes 2 antistatic wheels. The wheels have a diameter of 150 mm.



Ampoules organization system

Essential for life-saving medication. Modular and removable.



Equipped back

All Persolife trolleys have an oxygen cylinder and catheters holder on the back.



Organized drawers

Perfectly organized drawers to keep everything you need within easy reach, quickly and safely.

Persolife 400 small

Emergency cart

Cod. PLT43L4

Dimensions

600x595x1070 / 1225 H mm

Configuration

- 4 FH-Drawers 417 mm wide
- Defibrillator plate
- IV pole
- Cardiac massage plate on left side
- Locking through Safety Lock and seal
- Catheters holder
- Oxygen cylinder holder

■ Also available with different drawer configurations and without waste container



Persolife 400 medium

Emergency cart

Cod. PL40C5

Dimensions

780x595x1070 / 1225 H mm

Configuration

- 5 FH-Drawers 417 mm wide
- Defibrillator plate
- IV pole
- Left: 2 tilt-out bins and pump holder
- Right: waste container
- Frontal cardiac massage plate
- Locking through cardiac massage plate and seal
- Catheters holder
- Oxygen cylinder holder

■ Also available with different drawer configurations and without waste container



Persolife 400 small

Emergency cart

Cod. PLT43L4-ME

Dimensions

600x595x1070 / 1690 H mm

Configuration

- 4 FH-Drawers 417 mm wide
- Heart rate monitor holder
- Overbridge
- Cardiac massage plate on left side
- Locking through Safety Lock and seal
- Catheters holder
- Oxygen cylinder holder

■ Also available with different drawer configurations and without waste container



Persolife 400 medium

Emergency cart

Cod. PL41C5

Dimensions

780x595x1070 / 1225 H mm

Configuration

- 5 FH-Drawers 417 mm wide
- Defibrillator plate
- IV pole
- Left: 2 tilt-out bins and pump holder
- Right side: waste container
- Cardiac massage plate under worktop
- Locking through Safety Lock and seal
- Catheters holder
- Oxygen cylinder holder

■ Also available with different drawer configurations and without waste container



Persolife 600 large

Emergency cart

Cod. PL61C5

Dimensions

970x595x1070 / 1225 H mm

Configuration

- | 5 FH-Drawers 610 mm wide
- | Defibrillator plate
- | IV pole
- | Left: 2 tilt-out bins and pump holder
- | Right: waste container
- | Cardiac massage plate under worktop
- | Locking through Safety Lock and seal
- | Catheters holder
- | Oxygen cylinder holder

■ Also available with different drawer configurations and without waste container



Accessories for all trolleys

A selection of the most popular accessories that can be installed on all our trolleys. They are installed on accessory rails mounted on the overbridge or sides of the trolleys, or on the tube of the overbridge itself.

Persolife 600 large

Emergency cart

Cod. PL60C5-M2E

Dimensions

970x595x1070 / 1690 H mm

Configuration

- 5 FH-Drawers 610 mm wide
- Defibrillator plate
- IV pole
- Left: 2 tilt-out bins and pump holder
- Right: waste container
- Locking through frontal cardiac massage plate and seal
- Catheters holder
- Oxygen cylinder holder
- Overbridge with accessories



Disposable numbered seal

Cod. SG



Secretion bottle holder

■ Cod. PCLSB



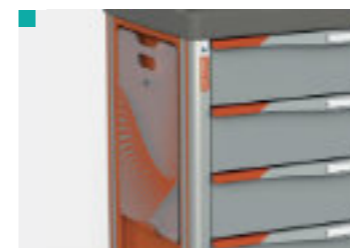
Frontal cardiac massage plate

■ Cod. PL-LC



Cardiac massage plate under worktop

■ Cod. PL-LCSP



Lateral cardiac massage plate

Cod. PL-LCL



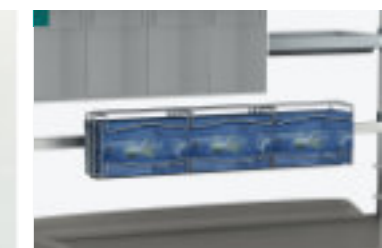
Grid basket

■ Cod. CLT34



Wastebag holder

■ Cod. PR2



3 gloveboxes holder

■ Cod. SPG30



Instrument hook for rail or tube mounting

Cod. HYPPD



Universal holder for sharps containers

Cod. KOBITE



Cable reel

■ Cod. AC



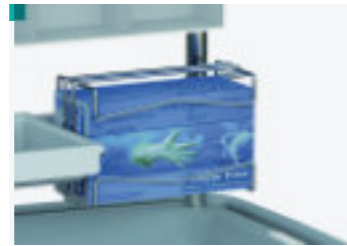
Side accessory rail

Cod. SABU



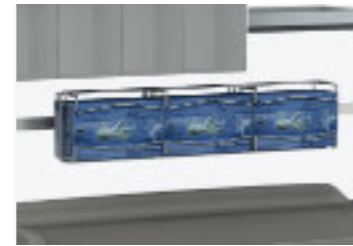
Triple glovebox holder vertical or horizontal

Cod. SP63



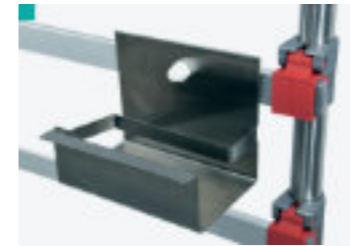
Single glovebox holder

Cod. SP61



Triple glovebox holder

Cod. SP63D



Plaster and adhesive roll dispenser

Cod. PS



Stainless steel basin and holder
· 150x70H mm

Cod. UCBC7



Rectangular stainless steel basin and holder
Dim. 295x235x45 H mm

Cod. BRT



Stainless steel worktop cover

Cod. PI-xxx



Grid basket

Cod. CLT34



Stainless steel catheters holder

Cod. CLCS-G



4 tilt-out dispensers

Cod. PCMCR4C



5 tilt-out dispensers

Cod. PCMCR5C



ISO compliant narcotics box

Cod. NRC-xx



Paediatric graphics

Cod. GP



Maxiwally wastebin

Cod. MWAL



Double waste container, open, removable

Cod. DTB



6 tilt-out dispensers

Cod. PCMCR6C



Stainless steel shelf with 3 removable dividers

Cod. PCMMI2



ABS plastic shelf

Cod. VA



ABS shelf with 3 dividers

Cod. VA-D



Steel rod basket

Cod. PR2/PR4



Foldable side-table

Cod. PRE-PRB/P-PRB



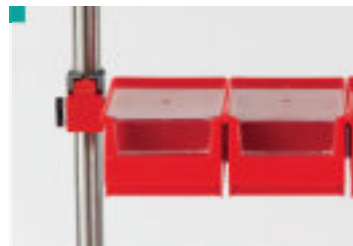
Universal holder for sharps containers

Cod. KOBITE



Adult diapers holder

Cod. PBOX



6 tilt-out dispensers

Cod. PCMSC



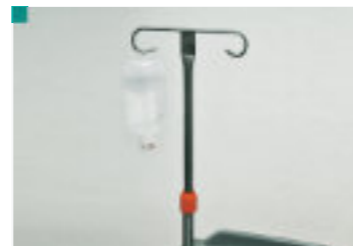
Stainless steel shelf

Cod. PRE-ML



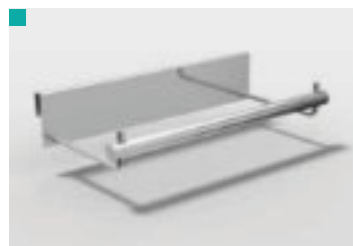
2 hook IV holder

Cod. PCMF



2 hook adjustable IV pole

Cod. APF



Paper roll holder for accessory rail

Cod. PR-BU



Bins for accessory rail
(H 58 / 138 mm)

Cod. BIN42-1M / BIN42-2M



Instrument hook for rail or tube

Cod. HYPP0



Infectious waste cartons holder

Cod. PRC



Preciso Trs

Transport columns

From the modest gauze to the expensive titanium prosthesis, from the simple syringe to the pacemaker: everything can comfortably travel in these elegant and solid columns.

- | Rolling smoothness thanks to twin wheels
- | Rolling shutter with keylock
- | Convenient transshipment thanks to the transportable FH-Drawer
- | Solidity and sturdiness thanks to the combination of extruded aluminium and ABS



Modular

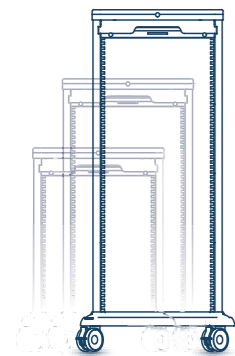
Thanks to their modularity and ISO 600x400 compatibility, Preciso Trs columns allow maximum flexibility when used as storage elements and optimisation of transport when used for handling.

Colours for side panels

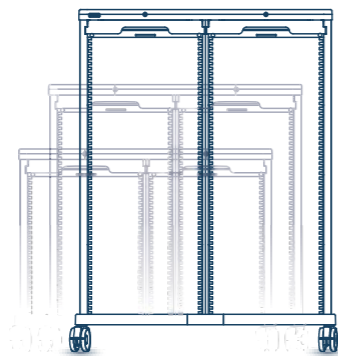


Preciso Trs Details

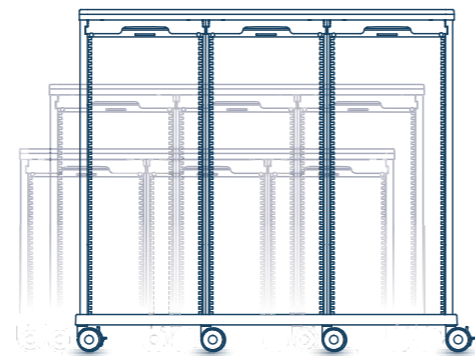
The versatility of Preciso Trs also lies in the variety of sizes available: single, double and triple in 3 heights: 110, 140 and 180 cm, with different configurations.



Single I
H: 110 cm | 140 cm | 180 cm



Double I
H: 110 cm | 140 cm | 180 cm



Triple I
H: 110 cm | 140 cm | 180 cm

Preciso Trs 110

Triple logistics column

Cod. TRS110T

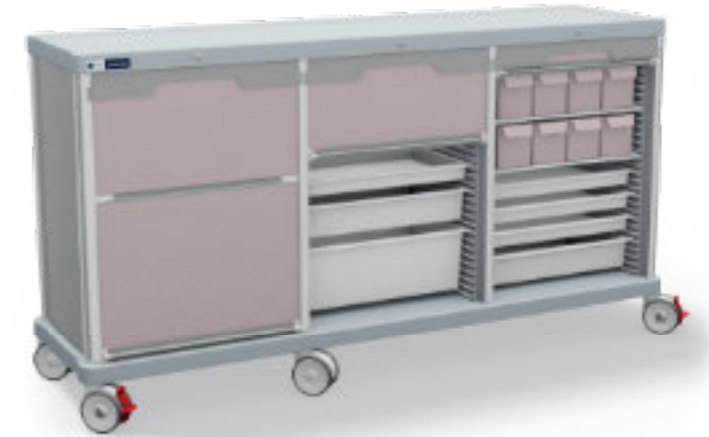
Dimensions
2040x570x1080 H mm

Type
3 modules

Wheels
6 twin Ø 125 mm,
2 with brake, 1 directional

ISO rails
27 + 27 + 27

Closing
Rolling shutter



Preciso Trs 110

Workstation/procedure table

Cod. TRS110D-S

Dimensions
1395x570x1080/1700 H mm

Type
2 modules with overbridge and accessories

Wheels
Twin Ø 125 mm,
2 with brake, 1 directional

ISO rails
27 + 27

Closing
Rolling shutter



Preciso Trs 140

Single logistics column

Cod. TRS140

Dimensions
830x650x1470 H mm

Type
1 module

Wheels
Twin Ø 125 mm,
2 with brake, 1 directional

ISO rails
41

Closing
Rolling shutter



Preciso Trs 140

Double logistics column

Cod. TRS140D

Dimensions
1395x570x1450 H mm

Type
2 modules

Wheels
Twin Ø 125 mm,
2 with brake, 1 directional

ISO rails
41 + 41

Closing
Rolling shutter



Preciso Trs 180

Mixed double logistics column

Cod. TRS180D-AS

Dimensions
1395x570x1830 H mm

Type
2 modules

Wheels
Twin Ø 125 mm,
2 with brake, 1 directional

ISO rails
55 + 55

Closing
Rolling shutter + transparent door



Preciso Trs 180

Single logistics column

Cod. TRS180

Dimensions
830x650x1855 H mm

Type
1 modules

Wheels
Twin Ø 125 mm,
2 with brake, 1 directional

ISO rails
55

Closing
Rolling shutter



Preciso Trs 180

Double logistics column

Cod. TRS180D

Dimensions
1395x570x1830 H mm

Type
2 modules

Wheels
Twin Ø 125 mm,
2 with brake, 1 directional

ISO rails
55 + 55

Closing
Rolling shutter



Preciso Trs 180

Column with ISO rails drawers

Cod. TRS180-CI

Dimensions
830x650x1855 H mm

Type
1 module with drawers

Wheels
Twin Ø 125 mm,
2 with brake, 1 directional

ISO rails
54





Multipurpose

Essential is a multipurpose trolley:

- Morning and evening hygiene of the patient/guest
- For linen change (distribution of clean linen and collection of dirty linen and waste)
- For other daily activities thanks to its features and versatility



Also available in the decorated version and with worktop and base in gray.

Essential Configurations

Some of the many configurations of Essential: dozens of versions, for dozens of different uses in all kinds of healthcare facilities.



ES8 Single
830x650x940 mm H



ES10 Single
830x650x1100 mm H



ES10 Dual
1210x570x1100 mm H

Essential single

Trolley with doors and 2 drawers

Cod. ES10-AKC2

Dimensions

830x650x1100 H mm

Materials

Aluminium
ABS plastic

Configuration

- 2 FH-Drawers
- Double door with key lock
- 1 internal shelf

Accessories

ES-DECOdecoration on request



Essential single

Trolley with open compartment

Cod. ES8

Dimensions

830x650x940 H mm

Materials

Aluminium
ABS plastic

Configuration

- Open compartment
- 1 internal shelf

Accessories

Door on request



Essential dual

Trolley with accessories

Cod. ESD10-38-S

Dimensions

1210x570x1100 H mm

Materials

Aluminium
ABS plastic

Configuration

- Compartment with door
- 1 internal shelf
- 2 FH-Drawers
- Compartment with 2 doors and key
- 1 internal shelf

Accessories

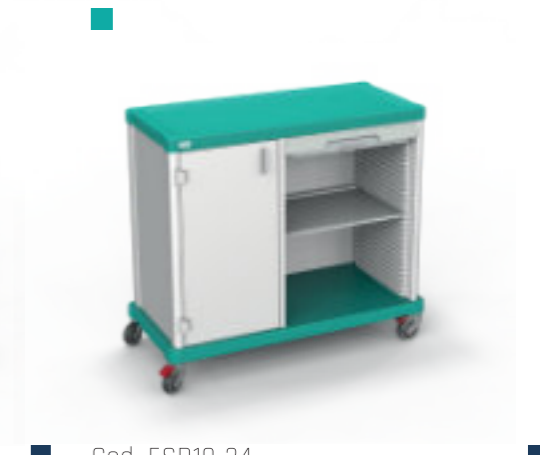
Lateral folding table PRE-PRB
Accessory tube APDB
Disinfectant dispenser DSU
Glove holder SPG1
Adult diapers holder PBOX
Decoration ES-DECO



Cod. ES10-AK



Cod. ESD10-13



Cod. ESD10-34



Cod. ESD10-34-S



Cod. ESD10-38



Cod. ESD10-39-5C

Essential dual

Trolley with doors and open compartment

Cod. ESD10-23

Dimensions

1210x570x1100 H mm

Materials

Aluminium
ABS plastic

Configuration

- Open compartment
- 1 shelf
- Compartment with 2 doors and key
- 1 internal shelf



Cod. ESD10-28-S



Cod. ESD10-38 & ESD-GR



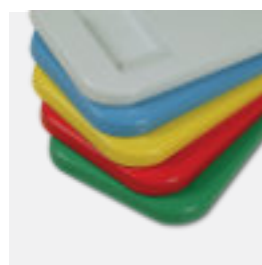
Cod. ESD10-16 & CB20

Iseo

Bag holder trolleys

The Iseo line groups the different bag holder trolleys for the collection and sorting of dirty linen.

- Structure in AISI304 stainless steel
- Pedal-operated lid
- Silent lid closure
- Bag retention system allows the use of bags in different sizes and materials



Lid
Shockproof plastic lid, with integrated grip handle and available in 5 colours.

Cod. C-x

Base
ABS plastic base. Concave shape to contain any leakage from the bag. Suitable for CB10P/CB20P/CB30P/CB40PL trolleys.

Cod. BASECB



Handle
AISI304 stainless steel tube handle.
Note: required to combine Iseo trolleys with the CT40 cabinet (see page 149).

Cod. MCB

Bag holder
Add-on bag holder.

Cod. CBA

Iseo

Bag holder trolley

Cod. CB10P

Dimensions
440x540x950 H mm

Wheels
Ø80 mm

Configuration
• 1 bag

Accessories
• Handle and baseplate
• Also available without pedal (Cod. CB10)



Iseo

Bag holder trolley

Cod. CB20P

Dimensions
650x540x950 H mm

Wheels
Ø80 mm

Configuration
• 2 bags

Accessories
• Handle and baseplate
• Also available without pedal (Cod. CB20)



Accessories Essential

A selection of accessories specific to Essential.



600 mm shelf

Cod. ES60-RIP



Push handle

Cod. TRS-MSD



Instrument hook for rail or tube

Cod. HYPP0



Coupling system for bag-holder trolley

Cod. ES-DOCK



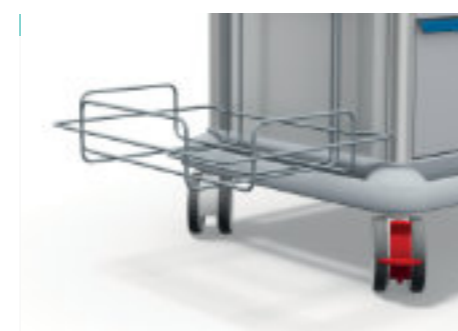
Double laundry bag holder with pedal

Cod. ES10-2P



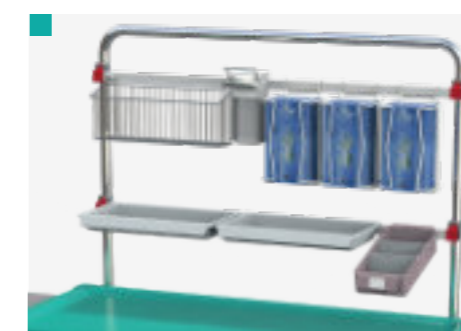
Single laundry bag holder with hinged lid

Cod. ES-PS1



Infectious waste cartons holder

Cod. PRC



Overbridge for accessories

Cod. ESD-0A



Adult diapers holder

Cod. PBOX



For containment of objects

Cod. ES-RIN



Wasty 70 L waste bag holder

Cod. ES-W



Foldable side-table

Cod. PRE-PRB



Rectangular stainless steel basin and holder

Cod. BRT



Vertical tube for accessories 30 H cm

Cod. ESD-TUBE



Night light

Cod. LUP



AP4298 - Professional like never before!



The design with simple and linear lines, and the antistatic/seamless upholstery guarantee an excellent sanitizing of the surfaces.



Set > Memory > Save

A new, multifunction hand control through which it is possible to save procedure positions (M1-M2-M3), in order to provide a more timely intervention.

Features

Exit position

The new AP4298 allows to raise and tilt forwards the seat section simultaneously, getting the patient in almost upright position, so allowing a comfortable descent.



Trendelenburg position

Trend and Reverse-Trend positions can be switched on through independent and programmed buttons on the hand control, which activate a synchronized adjustment of the backrest, seat and leg rest sections, until reaching the desired incline degree.



Details

- | | |
|---|--|
| 1 New ergonomic headrest with adjustable height. | 8 CPR lever (backrest quick release). |
| 2 Transparent plastic cover for the calf section (AP4291 opt.). | 9 Retractable castors for armchair displacement. |
| 3 Multifunction hand control with memorization of the positions. | 10 Bilateral foot control for seat height adjustment. |
| 4 Ergonomic armrests adjustable in height, inclination and extension. | 11 Support for the hand control integrated below the armrests (standard). |
| 5 Lying surfaces covered with seamless and fireproof upholstery. | 12 Pedal for retractable castors release (standard). |
| 6 Paper roll holder with integrated supports for urine/drainage bags (standard). | 13 Adjustable height I.V. stand made of chromed steel (AP4299 opt.). |
| 7 Control for vertical adjustment of the armrest. | 14 Stainless steel basin for AP4299 I.V. stand (AP4290 opt.). |

AP4298

Poltrona prelievi e terapia elettrica ad altezza variabile.
Electrical blood donor/therapy armchair with adjustable height.

A new level for professionalism

Experience and passion, combined with technology and craftsmanship, have generated AP4298, a state-of-the-art armchair that once again certifies Givas quality.

Seamless, fireproof and antistatic upholstery, with special paddings that fit perfectly to the physical conformation of each patient, infuse optimal relaxation so as to facilitate any type of therapeutic treatment.

Each function is electronically controlled through an hand control and a high-precision foot control: this allows doctors to operate in total freedom and maximum hygienic conditions.

AP4298 is therefore ideal for use in clinic and hospital settings, with the double advantage of facilitating the various therapeutic environments, while constantly guaranteeing maximum comfort to the patient, in the positions required by operational needs.

Standard configuration

- Back paper roll support width 60 cm;
- The paper roll support is equipped with lateral hooks for urine/drainage bags;
- Back push handle;
- One-color height adj. headrest (150 mm range);
- Bi-lateral pedal for height adjustment;
- CPR (backrest quick release);
- Retractable wheels for armchair displacement;
- Hand control with memory keys;
- Emergency rechargeable battery which allows armchair functioning during power failure.



- ⚙️ Electric height adjustment.
- ⚙️ Sections independent electric adjustment.
- ⚙️ Electric Trendelenburg position.
- 🖐️ Head rest and armrests manually adjustable.



Handling & parking kit!

Displacement for hygienic reasons are simplified by the insertion (underneath the protective carter) of 2 fixed castors and 1 swivel castor that can be activated using a specific control/pedal situated on the back of the armchair.



Ergonomic makes the difference!

The "quick control" functions such as CPR and Trendelenburg have been placed bilaterally to facilitate operators in reaching emergency positions in time.



Solidity, stability, security!

The particular containment shape of the armrest of the new AP armchairs guarantees stability of the arm during intravenous administration or sampling, while the sectoral clamp allows external and internal rotation for any kind of positioning. (see p. 322)

Vario Hydraulic

Hydraulic height adjustment on wheels - Sections gas spring adj. independent or synchronized - Headrest and armrests manually adjustable.

Reliability in total safety

Specific for patients with reduced mobility, the new "Vario Hydraulic" armchair is equipped with variable height by means of an hydraulic system operated by a bilateral control placed on the side of the base. This armchair is available with sections independent or synchronized movements, both with bilateral controls. The wide range of accessories applicable to this product makes it versatile to meet the specific needs of each user.

Sturdy structure made of painted steel, seat and backrest with support in coniferous plywood, foam padding, viscoelastic thermoforming fireproof foam padding to allow maximum comfort to prevent decubitus, armrests made of soft polyurethane foldable flush with the seat to facilitate the movement of the patient.

Base and seat covers in thermoformed ABS to facilitate cleaning operations. Complete with pair of rotatable footrests with automatic brake system for patient descent. On the base, 4 swiveling and pivoting wheels, 2 of which (rear ones) with simultaneous brake and 1 directional.

All metal parts varnished with epoxy powders are treated with Biomaster antibacterial additive (see p. 5).



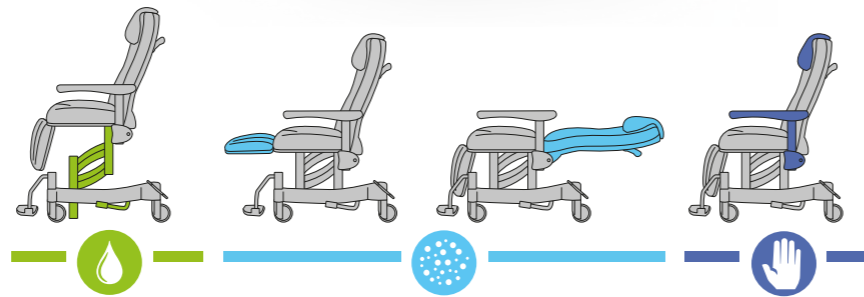
MR1076



MR1078

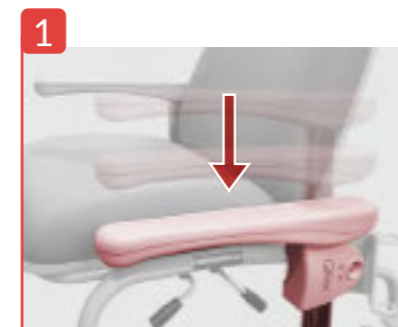
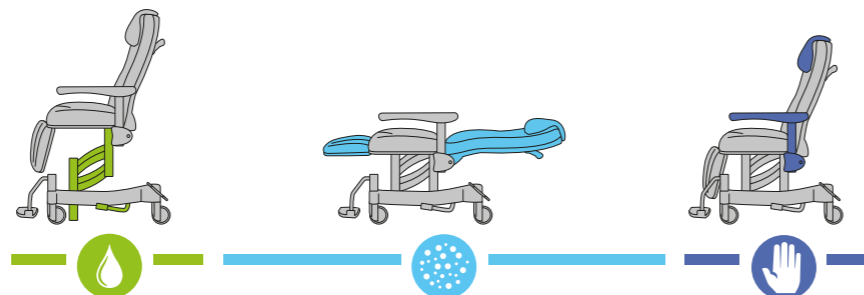
MR1078

- Hydraulic height adjustment, on wheels.
- Sections independent adj. by gas spring.
- Headrest and armrests manually adjustable.



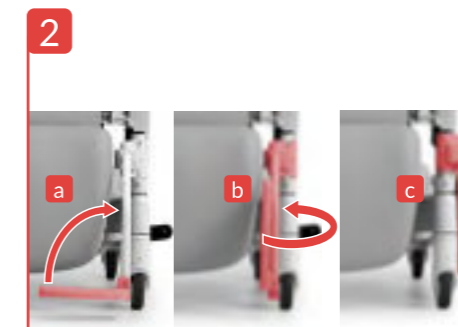
MR1076

- Hydraulic height adjustment, on wheels.
- Gas spring synchronized sections adjustment.
- Headrest and armrests manually adjustable.



Bi-lateral Access/Exit

A peculiarity of the RELAX armchairs is the ability to access and consequently raise the patient from the sides by lowering the comfortable armrests flush with the seat section, facilitating thus the operations by the healthcare professional.



Solidity, stability, security

A pair of flexible anti-tip platforms (see page 23), easily retractable, allow a comfortable support for the feet in case of mobility on medium-long paths.



Practicality of dynamics!

By placing the brake control in a horizontal position, the driving mode will be activated. The directional wheel will allow a safe and linear driving mode on long paths.

AP1164 Free



Details

- 1 New ergonomic headrest with adjustable height (MZ1058-MZ1059 opt.)
- 2 Push handle with integrated Anti-shock control (lever)
- 3 Lying surfaces covered with seamless and fireproof upholstery
- 4 Padding molded with integral cold-foamed polyurethane
- 5 Ergonomic armrests adjustable in height, inclination and extension
- 6 Independent bilateral levers for backrest and calf section adjustments
- 7 Release button for vertical adjustment of the armrest
- 8 4 swiveling and pivoting wheels Ø 125 mm, 1 directional

Safe, complete, ergonomic

Armchair with frame made of steel varnished with epoxy powders and treated with permanent antibacterial (Biomaster).

The shell of the seat is made of plywood padded with differentiated density foam and covered with soft skai; the back of the seat is made of thermoformed ABS. The backrest and the calf section can be adjusted independently through bilateral levers. The backrest is equipped with a lumbar support. The armrests, padded and upholstered, are shaped for a better containment and are adjustable in all directions thanks to a special sector clamp. The armchair is complete with 4 swivelling and pivoting wheels (Ø 125 mm) with independent rear brakes.

All metal parts varnished with epoxy powders are treated with Biomaster Antibacterial Technology antibacterial additive.



Independent incline through gas springs of backrest 90° / 185° and calf section -90° / 6°



Anti-shock position: sections incline 0° / -6°

AP1160 Synchro



Details

- 1 New ergonomic headrest with adjustable height (MZ1058-MZ1059 opt.)
- 2 Push handle with integrated Anti-shock control (lever)
- 3 Lying surfaces covered with seamless and fireproof upholstery
- 4 Padding molded with integral cold-foamed polyurethane
- 5 Ergonomic armrests adjustable in height, inclination and extension
- 6 Bilateral levers for the synchronized adjustment of backrest and calf section
- 7 Release button for vertical adjustment of the armrest
- 8 4 swiveling and pivoting wheels Ø 125 mm, 1 directional

The basis of practicality

Armchair with frame made of steel varnished with epoxy powders and treated with permanent antibacterial (Biomaster).

The shell of the seat is made of plywood padded with differentiated density foam and covered with soft skai; the back of the seat is made of thermoformed ABS. The adjustment of the backrest and the calf section can be performed synchronously through a bilateral lever. The backrest is equipped with a lumbar support.

The armrests, padded and upholstered, are shaped for a better containment and are adjustable in all directions thanks to a special sector clamp. The armchair is complete with 4 swivelling and pivoting wheels (Ø 125 mm) with independent rear brakes.

All metal parts varnished with epoxy powders are treated with Biomaster Antibacterial Technology antibacterial additive.



Synchronized incline through gas spring of backrest 90° / 185° and calf section -90° / 6°



Anti-shock position: sections incline 0° / -6°

Comfort

Maximum functionality in each component

Givas has always aspired to achieve maximum practicality and ergonomics of use from every component of the product.

Compositional elements with a simple and functional design facilitate a timely intervention in case of urgency, and the armrest of the new AP armchairs is the result of our constructive policy.

Few structural elements assembled and joined by a particular sector clamp, allow a personalized setting of the armrest in every required position.

The possible adjustments in height, inclination, extensibility and rotation give the patient a total comfort, while providing a full operation to the health worker.

Details

The particular containment shape of the armrest of the new AP armchairs guarantees stability of the arm during intravenous administration or sampling, while the sectoral clamp allows external and internal rotation for any kind of positioning.



Armrest rotation 360°.



Front and back extension of 200 mm.



Incline of 45°.



Height adjustment of the upper part 130 mm.



Height adjustment of the main structure 200 mm.



The particular design of the headrest without shaping and perimeter seams, and the possibility to adjust its height, ensures patients of various heights a high comfort in prolonged stationary situations.



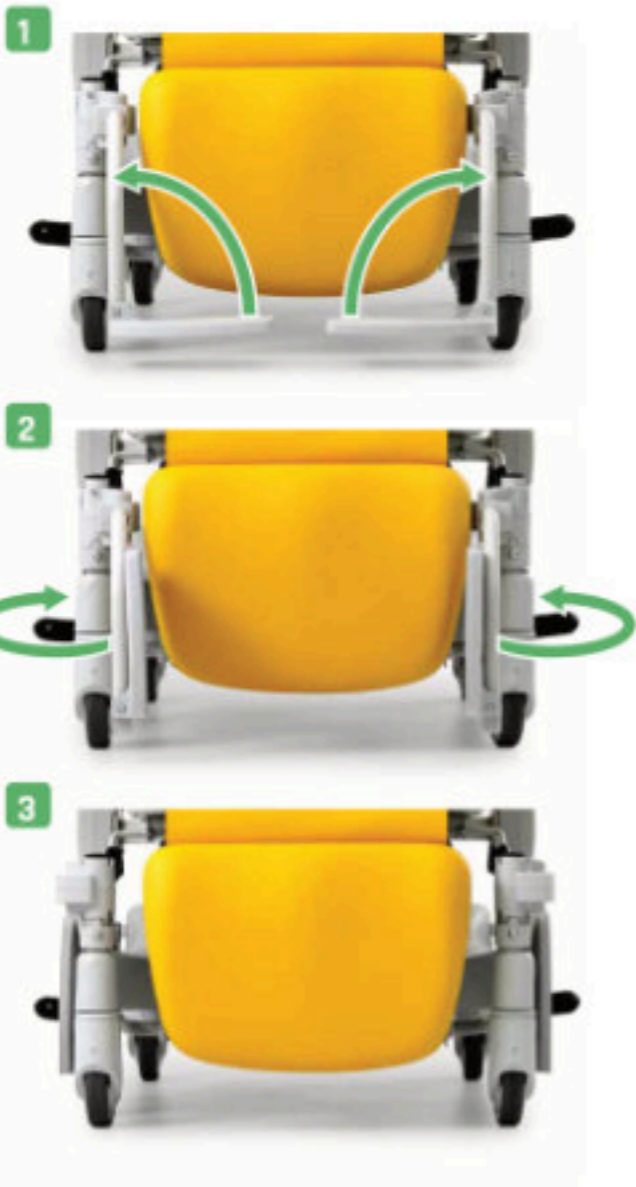
Safety

Solidity, stability, security

The solidity of the new AP armchairs ensures maximum stability in any position of use, while the maximum load up to 180 kg (AP4298), allows a safe use even for the most robust patients.

A pair of flexible, easily retractable platforms (images 1-2-3), allow a comfortable support for the feet in case of mobility on medium-long journeys.

Should the patient stand up on the footrest platforms without having activated the parking brakes, their flexion to the floor would ensure an excellent stability of the chair, while the perfect balance of the load-bearing structure combined with the large wheels (Ø 125 mm) would prevent it from tipping over.



Details

If the patient gets up on the footrest platforms without having activated the parking brakes first, the platforms flex towards the floor allowing the chair to have a temporary safe parking.



Front access / Exit

A special feature of the AP armchairs is the possibility to have the patient access from the forehead and consequently help him/her to stand up by using the comfortable armrests that offer a valid and ergonomic support, facilitating thus the work of the health workers as well.



Accessories



MZ1048
Paper roll holder.



MZ5149
Adjustable height I.V. stand made of chromed steel.



MZ5049
Fixed height I.V. stand made of chromed steel.



MZ5163
Right clamp for I.V. stand with adjustable height.



MZ5164
Left clamp for I.V. stand with adjustable height.



MZ5051
Ambidextrous clamp for I.V. stand with fixed height.



AP4292
Transparent plastic cover for the calf section.



MZ5120
Oxygen cylinder holder only for fixed height armchairs.



MZ5046
Couple of extractable ABS platforms.



MZ1058
Colored height adjustable headrest (same color of the armchair).



MZ1059
Grey height adjustable headrest.

Features

Technical data











		AP4300	AP1164
Total length	mm	1100+2060	950+1750
Total width	mm	810	720
Total height	mm	1300+1600	1230
Seat measures	mm	580x520	540x520
Seat height adjustment (min/max)	mm	580+880	520
Backrest measures	mm	580x800	540x850
Backrest incline	deg	0°/85°	90°/185°
Armrest measures	mm	475x145	475x145
Calf section measures	mm	580x450	450x330
Calf section incline	deg	-85°/ 0°	-90°/ 6°
Trend/Reverse-Trend adjustment	deg	15°/ -15°	0°/ -6° *
Ø wheels	mm	4 x Ø 125	125
Motors	n°	5	-
Safe payload	kg	210	180
Patient maximum weight	kg	180	150
Armchair weight	kg	90	42
Regulation	-	2017/745/UE 2017/745/EU	2017/745/UE 2017/745/EU
Regulations applied	-	CEI EN 60601-1 CEI EN 60601-1-2 (EMC)	--
Reg. code medical device (Italian Ministry of Health):	-	1878912	1514531
Family/category of the medical device:	-	V0802	V0802

Electrical data

		AP4300
Voltage	V	100-240 V ± 10%
Frequency	Hz	50/60
Insulation class	/	I
Applied part	/	Tipo B
Protection degree	/	IPX5
Battery	Ah	1,2 Ah
Battery charging time	h	6-8

Quality

Coating characteristics:

-  Fireproof (class 1/IM)
-  Waterproof and stain resistant
-  Antibacterial biocompatible (opt.)
-  Abrasion resistance Martindale 50.000 (250.000 opt.)
-  Easy sanitization with medical disinfectants
-  Shock and wear resistant colors
-  Non-toxic, non-irritating and free from phthalates
-  Biocompatibility DIN EN ISO: 10993-5 / 10993-10 / 10993-1 (opt.) Colors

Paddings in expanded, flexible and highly resilient polyurethane foam, made by co-injection molding, to ensure durability and safety (class 1/IM)

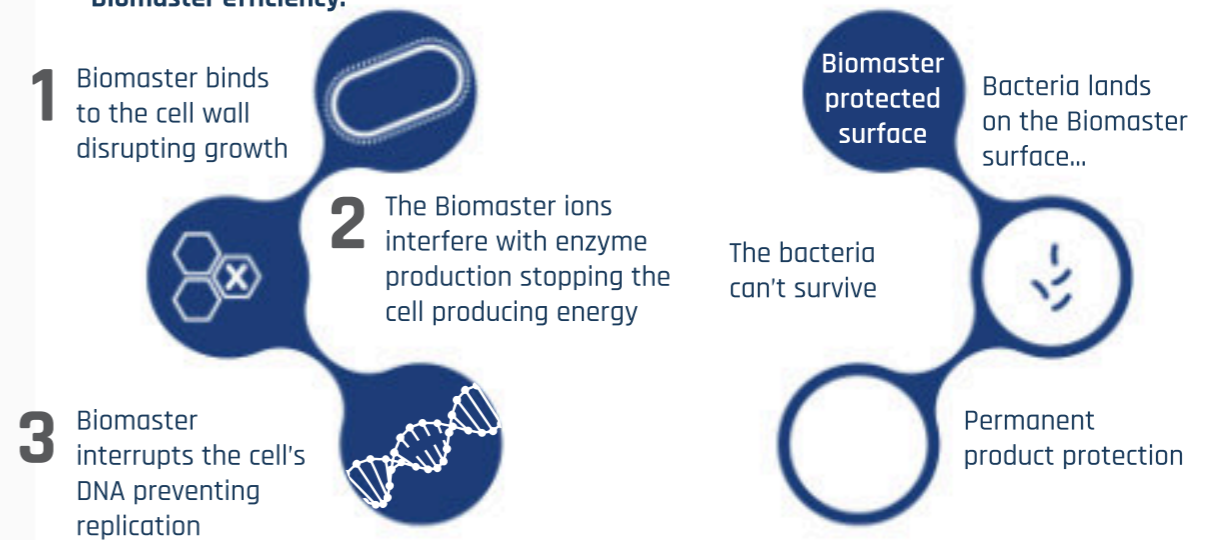
The coating phase requires a thorough knowledge of the various types of materials used to obtain the best result. The use of flexible polyurethane foam material promotes high breathability, increasing the comfort index, as it is softer on the surface without losing the necessary support features.

Biomaster

Antibacterial Technology

The structural components of the new AP armchairs are painted with epoxy powders with the addition of Biomaster Antibacterial Technology additive. Biomaster Antibacterial Technology is an effective means to combat the development of MRSA, VRE, E.Coli, Salmonella, Campylobacter, Legionella and over 50 different species of bacteria. It is shown that it drastically reduces the presence and reproduction of bacteria very quickly. An integral part of our products providing permanent and lasting protection against the threat of contamination.

Biomaster efficiency:



Colors





Dimpled Serving Tray Cook-serve | Cook-chill 1 GNI (Hot-Cold Serving Tray)

Extended tray variant with Cook-chill technology. Enhances food quality through temperature regulation



Standard Ripple Serving tray
200ml (S) / 250ml (L)



Ripple HC Serving Tray
75ml
(Hot-Cold)

RIPPLE CROCKERY

PATIENT MEAL CROCKERY
WORKFLOW & GERIATRIC-FOCUSED

- Microwavable
- Colour-customisable
- Ergonomic design
- Dishwasher-friendly



Feature Highlights



Anti-slip dimples

Dimples work together with the Ripple crockery to facilitate one-handed dining and stability when traversing from the kitchen to the ward.



Closed basin concept

Closed basins and these dimples also serve to contain spills of sauces or drinks



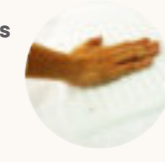
Side Recess

Makes it easy for the stewarding staff to pick off and put down loaded or unloaded trays



Unique gripping positions

Unique design allows multiple gripping positions to accommodate differently demographic of staff or patients' anthropometry



Cooling under bumps

Multiple bumps on the underside serve as cooling fins to quickly dissipate the heated tray while providing extra hand surface grip



Geri Chair compatibility

Raised footing allows the tray to sit nicely on Geri Chair



Brand Logo

Customise with your logo for brand identity purposes

Plate

For serving non-soupy main dishes, pasta, rice, noodles and pancakes



Rounded corners
Steep side walls allows easy one-hand scooping with a fork or spoon



Enlarged thumb rest
"Ears" that extend on both sides aid the caretaker to carry the plate with one hand while feeding the patient



Passive venting
Side lip recess on the underside allows excess moisture to escape while making lid easy for user to lift



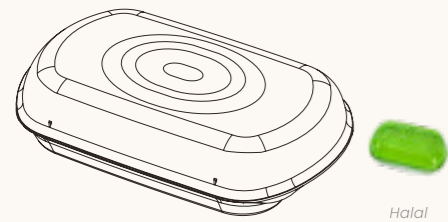
Lid as a serving saucer
Used to contain other smaller lids, wrappers, and soiled cutlery during dining sessions



Nesting (Storage)
Individual plate and plate lids make it easy to nest on each other to save space during storage



Rippled nesting (pre-plate)
The rippled surface on the lid allows the assembled plate containing food to be placed on top of each other during food preparation



Casserole

For serving soup based main dishes, cereals, purees and porridge



4-direction lid
The design of the Ripple's lid is quad-directional to meet the pre-plating requirements of the industrial kitchen



Lid as serving saucer
Can be used by the caregiver to catch drools or spills while feeding



Nesting (storage)
Individual plate and plate lids make it easy to nest on each other to save space during storage



Rounded corners
To enhance the "yogurt scooping" gesture, internal corners have been designed to better fit the spade of the cutlery spoon



Passive venting
The side lip recess on the underside allows excess moisture to escape while making the lid easy for users to lift



Rippled Nesting (pre-plate)
The rippled surface on the lid allows the assembled plate containing food to be placed on top of each other during food preparation

Cup

For serving hot & cold beverage and soup



Elliptical straw vent hole
For ergonomic convenience, the lid can be used with a tilted straw while still allowing excess moisture to escape



Restricted feeding lip
Compatible with coffee lids to prevent spillage and minimize choking risk



Oversized tilted handle
For various gripping styles adopted by different demographics.
- Geri Grip
- Thumb rest grip



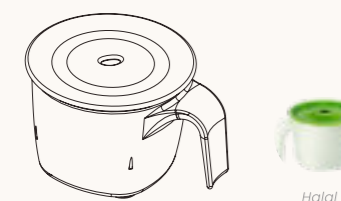
Rounded corners
Cup can be used for serving soup and puree



Quick release lid
The lid is designed with maximum engagement for AGV traversing yet easy removal by the user



Rippled nesting (pre-plate)
The rippled surface on the lid allows other assembled cups with contents to be placed on top of each other during food preparation



Dishware

For serving rice, dessert, appetiser, egg and side dishes



4-direction lid
The design of the ripple lid is quad-directional to meet the pre-plating requirements of the industrial kitchen



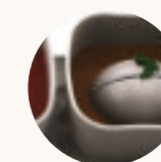
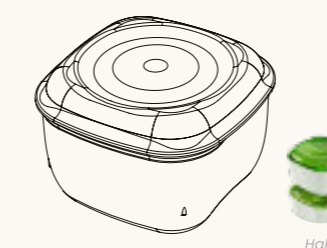
Rounded corners
To enhance "yogurt scooping" gesture, internal corners have been designed to better fit the spade of the cutlery spoon



Nesting (storage)
Individual dishware and its lids make it easy to nest on each other for space saving during storage



Kidney shaped design
Kidney shape vessel shaped to better fit for single handed gripping while maintaining maximum volume



Increased height
The tall dimensions of the vessel make it suitable for soup and ideal for typical nutrition meal supplements (hard boiled egg)

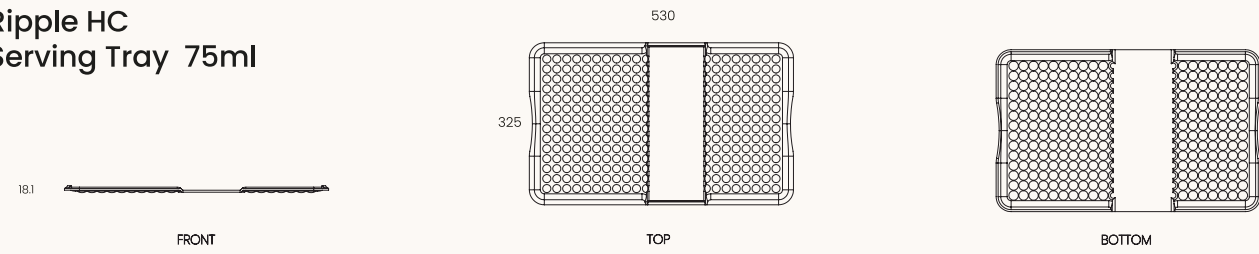


Rippled Nesting (pre-plate)
The rippled surface on the lid allows the assembled plate containing food to be placed on top of each other during food preparation

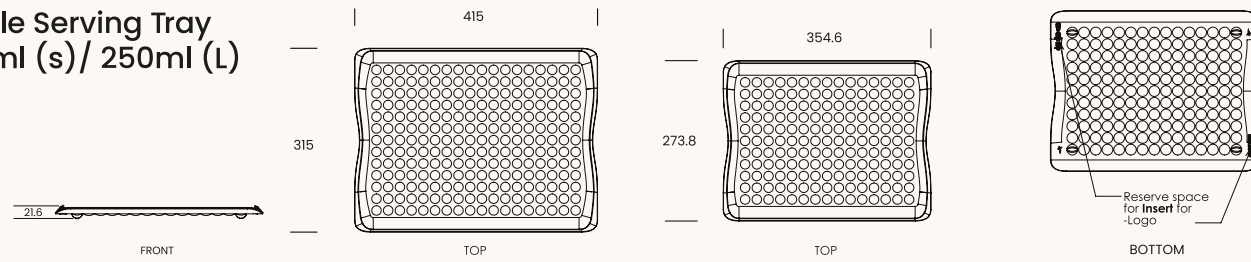
Specifications

Design Registration No.: 30202109478W

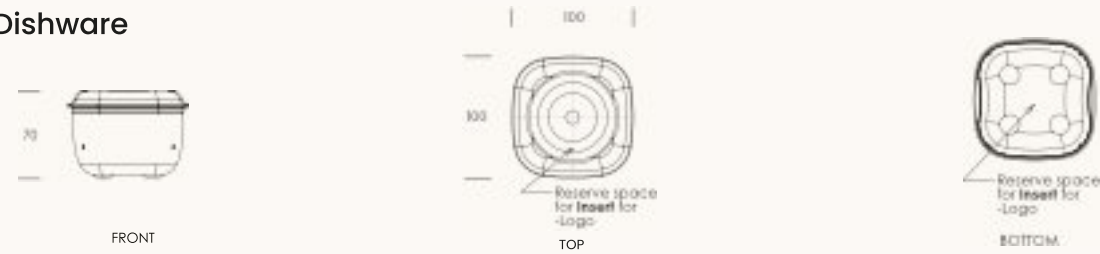
Ripple HC Serving Tray 75ml



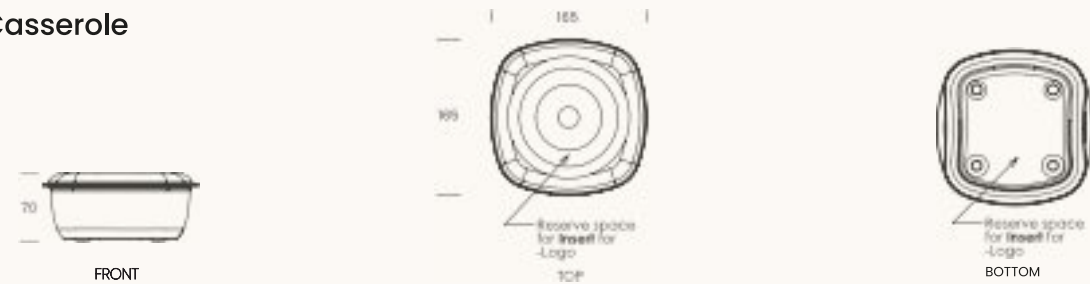
Ripple Serving Tray 200ml (s) / 250ml (L)



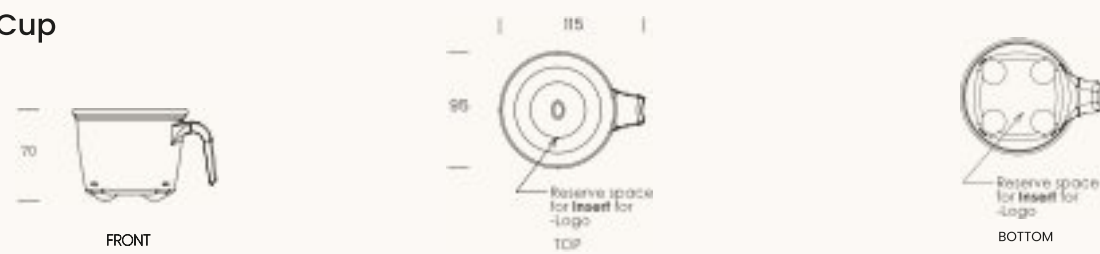
Ripple Dishware 250ml



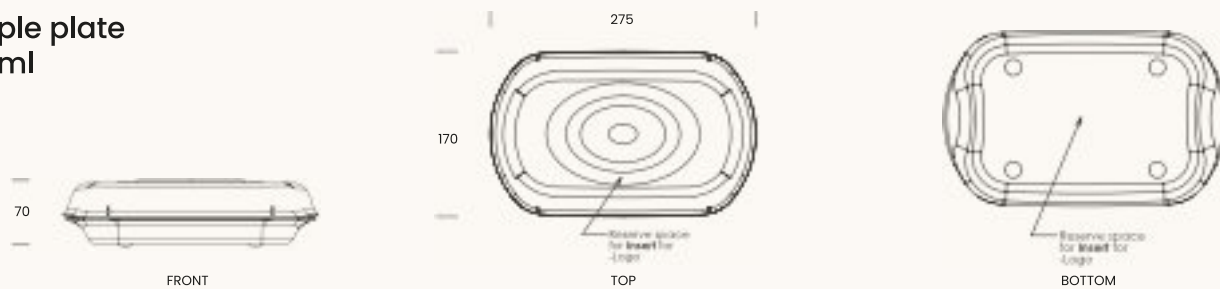
Ripple Casserole 750ml



Ripple Cup 200ml



Ripple plate 120ml



Some of our partners:





systemz.sg

SINGAPORE

Systemz Pte Ltd
16 Sungei Kadut Way
Singapore 728793
info@systemz.sg
+65 6465-0387 (Main)
+65 6465-0656 (Fax)



systemz.com.my

MALAYSIA

Systemz Shd Bhd
No.11, Jalan PJU 3/46,
Sunway Damansara Technology Park, 47810 Petaling Jaya,
Selangor Darul Ehsan, Malaysia
+603 7803 8808 (Main), +6016 2174511 (Mobile)
info@systemz.com.my